

Figure 1. Location of Building 50, Department 26 and Former Plating Building and Northeast Area Sources.....	1
Figure 2. Conceptualized KCP DNAPL migration and fate.....	2
Figure 3. Hollow-stem auger catching device.....	3
Figure 4. Building 50 Source Area TCE distribution, 0 to 5 feet below ground surface.....	4
Figure 5. Building 50 Source Area TCE distribution, 6 to 10 feet below ground surface.....	5
Figure 6. Building 50 Source Area TCE distribution, 11 to 15 feet below ground surface.....	6
Figure 7. Building 50 Source Area TCE distribution, 16 to 20 feet below ground surface.....	7
Figure 8. Building 50 Source Area TCE distribution, 21 to 25 feet below ground surface.....	8
Figure 9. Building 50 Source Area TCE distribution, 26 to 30 feet below ground surface.....	9
Figure 10. Building 50 Source Area TCE distribution, 31 to 35 feet below ground surface.....	10
Figure 11. Building 50 Source Area DCE distribution, 0 to 5 feet below ground surface. ....	11
Figure 12. Building 50 Source Area DCE distribution, 6 to 10 feet below ground surface. ....	12
Figure 13. Building 50 Source Area DCE distribution, 11 to 15 feet below ground surface. ....	13
Figure 14. Building 50 Source Area DCE distribution, 16 to 20 feet below ground surface. ....	14
Figure 15. Building 50 Source Area DCE distribution, 26 to 30 feet below ground surface. ....	15
Figure 16. Building 50 Source Area DCE distribution, 31 to 35 feet below ground surface. ....	16
Figure 17. Building 50 Source Area VC distribution, 6 to 10 feet below ground surface. ....	17
Figure 18. Building 50 Source Area VC distribution, 11 to 15 feet below ground surface. ....	18
Figure 19. Building 50 Source Area VC distribution, 16 to 20 feet below ground surface. ....	19
Figure 20. Building 50 Source Area VC distribution, 26 to 30 feet below ground surface. ....	20
Figure 21. Building 50 Source Area VC distribution, 31 to 35 feet below ground surface. ....	21
Figure 22. Department 26 and Former Plating Building Source Area TCE distribution, 0 to 5 feet below ground surface. ....	22
Figure 23. Department 26 and Former Plating Building Source Area TCE distribution, 6 to 10 feet below ground surface. ....	23
Figure 24. Department 26 and Former Plating Building Source Area TCE distribution, 11 to 15 feet below ground surface. ....	24
Figure 25. Department 26 and Former Plating Building Source Area TCE distribution, 16 to 20 feet below ground surface. ....	25
Figure 26. Department 26 and Former Plating Building Source Area TCE distribution, 21 to 25 feet below ground surface. ....	26
Figure 27. Department 26 and Former Plating Building Source Area TCE distribution, 26 to 30 feet below ground surface. ....	27
Figure 28. Department 26 and Former Plating Building Source Area TCE distribution, 31 to 35 feet below ground surface. ....	28
Figure 29. Department 26 and Former Plating Building Source Area TCE distribution, 36 to 40 feet below ground surface. ....	29
Figure 30. Department 26 and Former Plating Building Source Area TCE distribution, 41 to 45 feet below ground surface. ....	30
Figure 31. Department 26 and Former Plating Building Source Area DCE distribution, 0 to 5 feet below ground surface. ....	31

Figure 32. Department 26 and Former Plating Building Source Area DCE distribution, 6 to 10 feet below ground surface. .... 32

Figure 33. Department 26 and Former Plating Building Source Area DCE distribution, 11 to 15 feet below ground surface. .... 33

Figure 34. Department 26 and Former Plating Building Source Area DCE distribution, 16 to 20 feet below ground surface. .... 34

Figure 35. Department 26 and Former Plating Building Source Area DCE distribution, 21 to 25 feet below ground surface. .... 35

Figure 36. Department 26 and Former Plating Building Source Area DCE distribution, 26 to 30 feet below ground surface. .... 36

Figure 37. Department 26 and Former Plating Building Source Area DCE distribution, 31 to 35 feet below ground surface. .... 37

Figure 38. Department 26 and Former Plating Building Source Area DCE distribution, 36 to 40 feet below ground surface. .... 38

Figure 39. Department 26 and Former Plating Building Source Area DCE distribution, 41 to 45 feet below ground surface. .... 39

Figure 40. Department 26 and Former Plating Building Source Area VC distribution, 6 to 10 feet below ground surface. .... 40

Figure 41. Department 26 and Former Plating Building Source Area VC distribution, 11 to 15 feet below ground surface. .... 41

Figure 42. Department 26 and Former Plating Building Source Area VC distribution, 16 to 20 feet below ground surface. .... 42

Figure 43. Department 26 and Former Plating Building Source Area VC distribution, 21 to 25 feet below ground surface. .... 43

Figure 44. Department 26 and Former Plating Building Source Area VC distribution, 26 to 30 feet below ground surface. .... 44

Figure 45. Department 26 and Former Plating Building Source Area VC distribution, 31 to 35 feet below ground surface. .... 45

Figure 46. Department 26 and Former Plating Building Source Area VC distribution, 36 to 40 feet below ground surface. .... 46

Figure 47. Department 26 and Former Plating Building Source Area VC distribution, 41 to 45 feet below ground surface. .... 47

Figure 48. Northeast Area Source Area TCE distribution, 0 to 5 feet below ground surface. .... 48

Figure 49. Northeast Area Source Area TCE distribution, 6 to 10 feet below ground surface. .... 49

Figure 50. Northeast Area Source Area TCE distribution, 11 to 15 feet below ground surface. .... 50

Figure 51. Northeast Area Source Area TCE distribution, 16 to 20 feet below ground surface. .... 51

Figure 52. Northeast Area Source Area TCE distribution, 21 to 25 feet below ground surface. .... 52

Figure 53. Northeast Area Source Area TCE distribution, 26 to 30 feet below ground surface. .... 53

Figure 54. Northeast Area Source Area TCE distribution, 31 to 35 feet below ground surface. .... 54

Figure 55. Northeast Area Source Area TCE distribution, 36 to 40 feet below ground surface. .... 55

Figure 56. Northeast Area Source Area TCE distribution, 41 to 45 feet below ground surface. .... 56

Figure 57. Northeast Area Source Area TCE distribution, 46 to 50 feet below ground surface. .... 57

Figure 58. Northeast Area Source Area DCE distribution, 0 to 5 feet below ground surface. ....	58
Figure 59. Northeast Area Source Area DCE distribution, 6 to 10 feet below ground surface. ....	59
Figure 60. Northeast Area Source Area DCE distribution, 11 to 15 feet below ground surface. ....	60
Figure 61. Northeast Area Source Area DCE distribution, 16 to 20 feet below ground surface. ....	61
Figure 62. Northeast Area Source Area DCE distribution, 21 to 25 feet below ground surface. ....	62
Figure 63. Northeast Area Source Area DCE distribution, 26 to 30 feet below ground surface. ....	63
Figure 64. Northeast Area Source Area TCE distribution, 31 to 35 feet below ground surface. ....	64
Figure 65. Northeast Area Source Area DCE distribution, 36 to 40 feet below ground surface. ....	65
Figure 66. Northeast Area Source Area DCE distribution, 41 to 45 feet below ground surface. ....	66
Figure 67. Northeast Area Source Area DCE distribution, 46 to 50 feet below ground surface. ....	67
Figure 68. Northeast Area Source Area VC distribution, 6 to 10 feet below ground surface. ....	68
Figure 69. Northeast Area Source Area VC distribution, 11 to 15 feet below ground surface. ....	69
Figure 70. Northeast Area Source Area VC distribution, 16 to 20 feet below ground surface. ....	70
Figure 71. Northeast Area Source Area VC distribution, 21 to 25 feet below ground surface. ....	71
Figure 72. Northeast Area Source Area VC distribution, 26 to 30 feet below ground surface. ....	72
Figure 73. Northeast Area Source Area VC distribution, 36 to 40 feet below ground surface. ....	73
Figure 74. Northeast Area Source Area VC distribution, 41 to 45 feet below ground surface. ....	74
Figure 75. Current condition extraction well locations. ....	75
Figure 76. Future condition extraction well locations. ....	76
Figure 77. Groundwater evaluation locations. ....	77
Figure 78. Building 50, current conditions, TCE remediation evaluation. ....	78
Figure 79. Building 50, current conditions, DCE remediation evaluation. ....	79
Figure 80. Building 50, current conditions, VC remediation evaluation. ....	80
Figure 81. Building 50, future conditions, TCE remediation evaluation. ....	81
Figure 82. Building 50, future conditions, DCE remediation evaluation. ....	82
Figure 83. Building 50, current conditions, VC remediation evaluation. ....	83
Figure 84. Department 26 and Former Plating Building East, current conditions, TCE remediation evaluation. ....	84
Figure 85. Department 26 and Former Plating Building East, current conditions, DCE remediation evaluation. ....	85
Figure 86. Department 26 and Former Plating Building East, current conditions, VC remediation evaluation. ....	86
Figure 87. Department 26 and Former Plating Building West, current conditions, TCE remediation evaluation. ....	87
Figure 88. Department 26 and Former Plating Building West, current conditions, DCE remediation evaluation. ....	88
Figure 89. Department 26 and Former Plating Building West, current conditions, VC remediation. ....	89
Figure 90. Department 26 and Former Plating Building East, future conditions, TCE remediation evaluation. ....	90
Figure 91. Department 26 and Former Plating Building East, future conditions, DCE remediation evaluation. ....	91

Figure 92. Department 26 and Former Plating Building East, future conditions, VC remediation evaluation. .... 92

Figure 93. Northeast Area, current conditions, TCE remediation evaluation. .... 93

Figure 94. Northeast Area, current conditions, DCE remediation evaluation. .... 94

Figure 95. Northeast Area, Current conditions, VC remediation evaluation..... 95

Figure 96. Northeast Area, Future conditions, TCE remediation evaluation..... 96

Figure 97. Northeast Area, Future conditions, DCE remediation evaluation. .... 97

Figure 98. Northeast Area, Future conditions, VC remediation evaluation. .... 98



Figure 1. Location of Building 50, Department 26 and Former Plating Building and Northeast Area Sources.

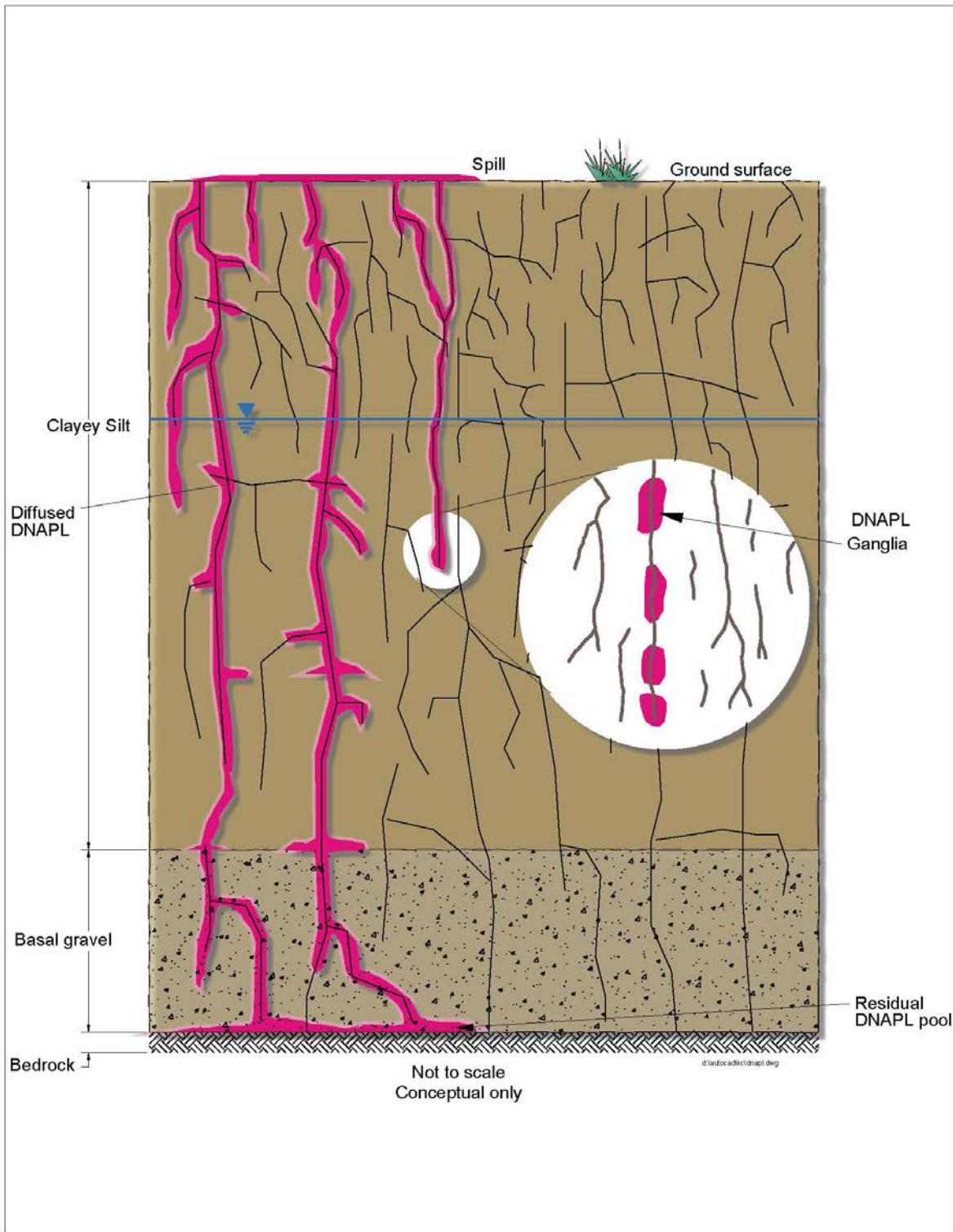


Figure 2. Conceptualized KCP DNAPL migration and fate.



Figure 3. Hollow-stem auger catching device.

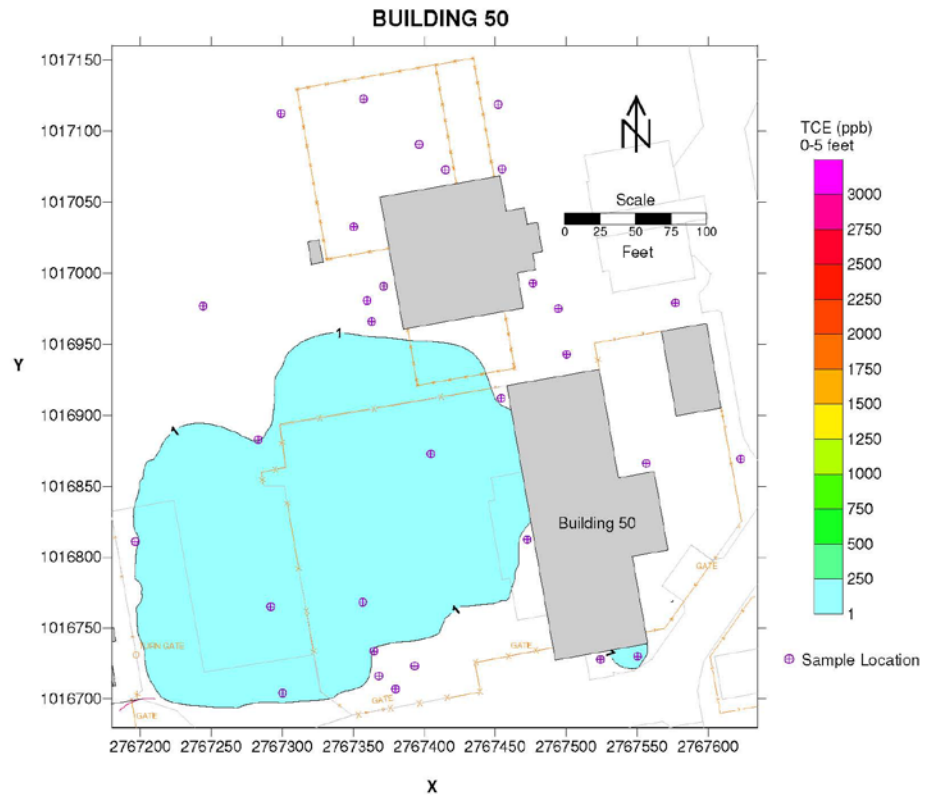


Figure 4. Building 50 Source Area TCE distribution, 0 to 5 feet below ground surface.



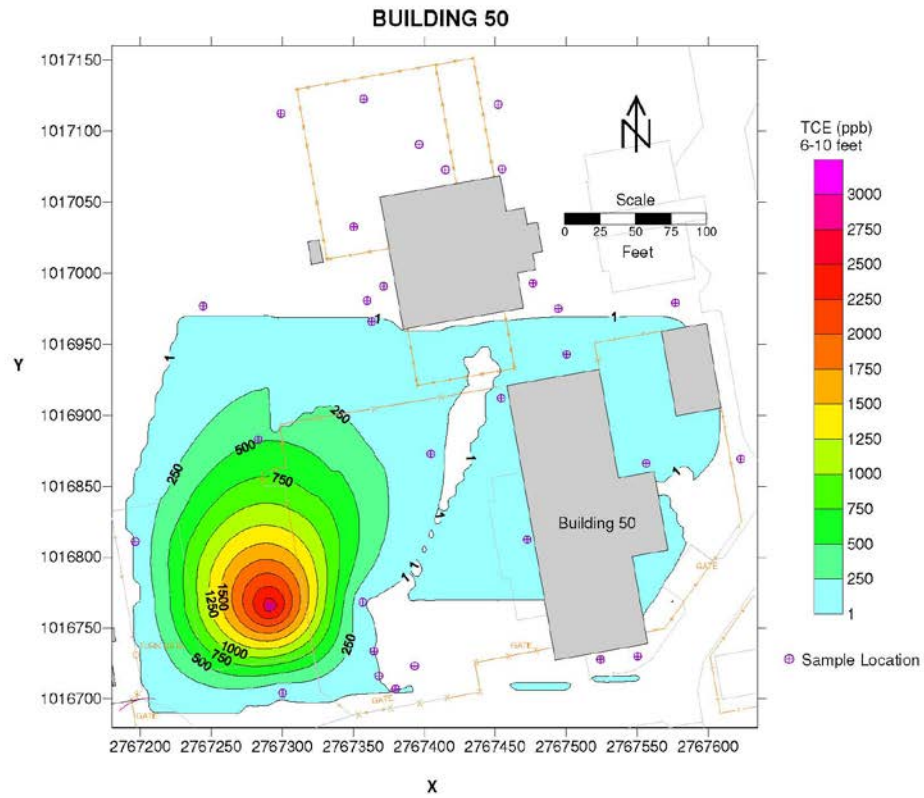


Figure 5. Building 50 Source Area TCE distribution, 6 to 10 feet below ground surface.

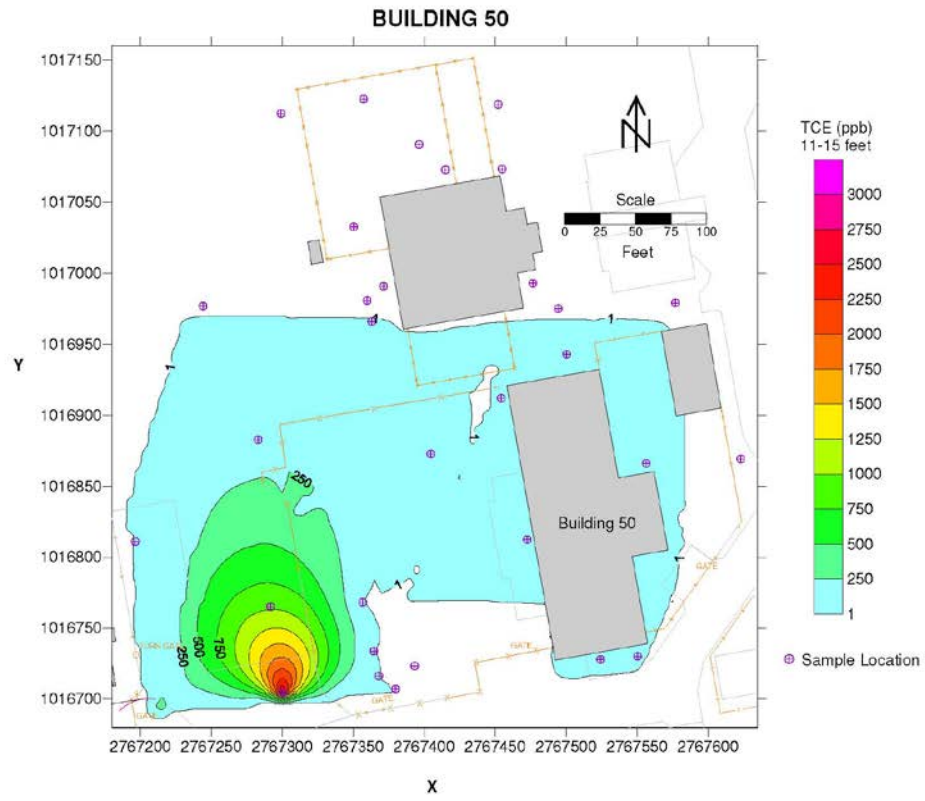


Figure 6. Building 50 Source Area TCE distribution, 11 to 15 feet below ground surface.

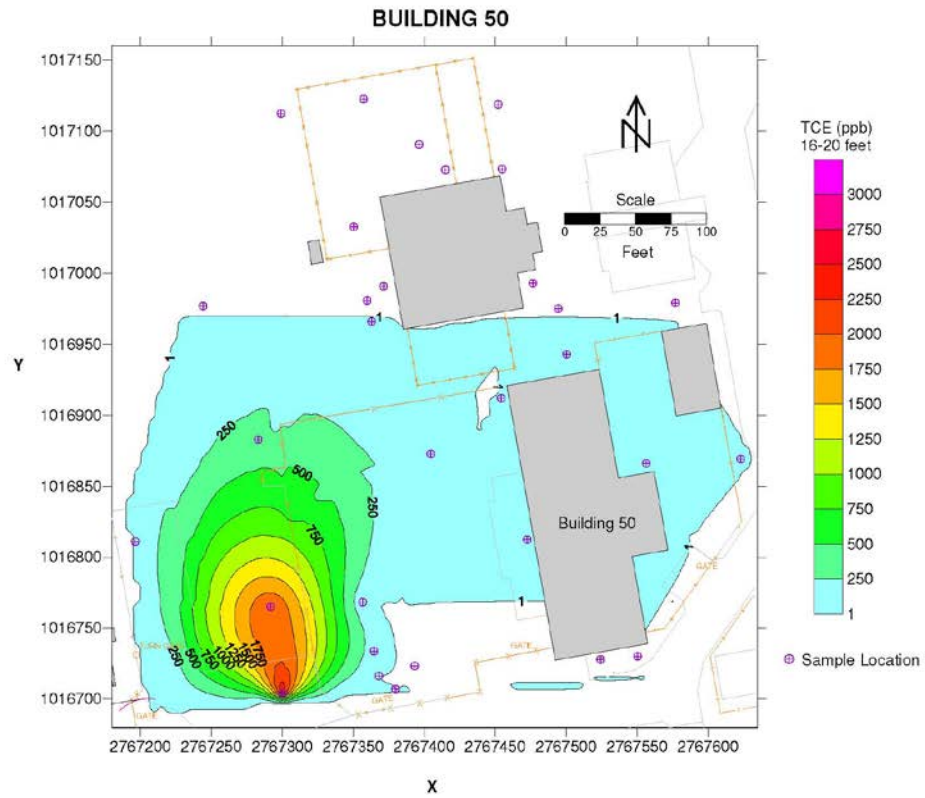


Figure 7. Building 50 Source Area TCE distribution, 16 to 20 feet below ground surface.

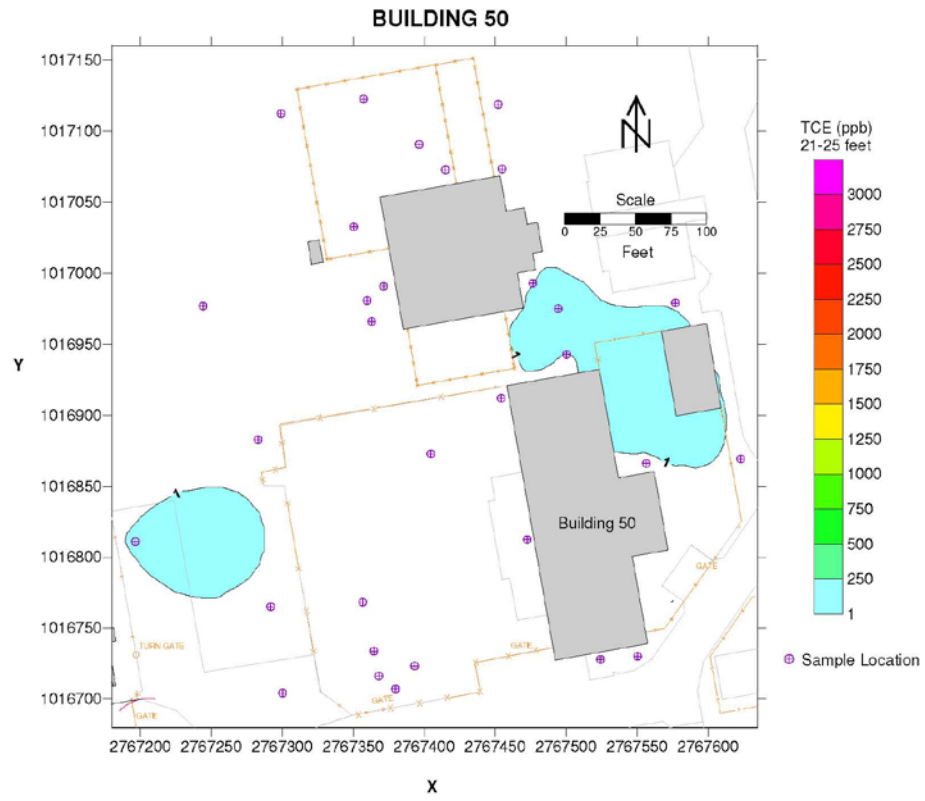


Figure 8. Building 50 Source Area TCE distribution, 21 to 25 feet below ground surface.

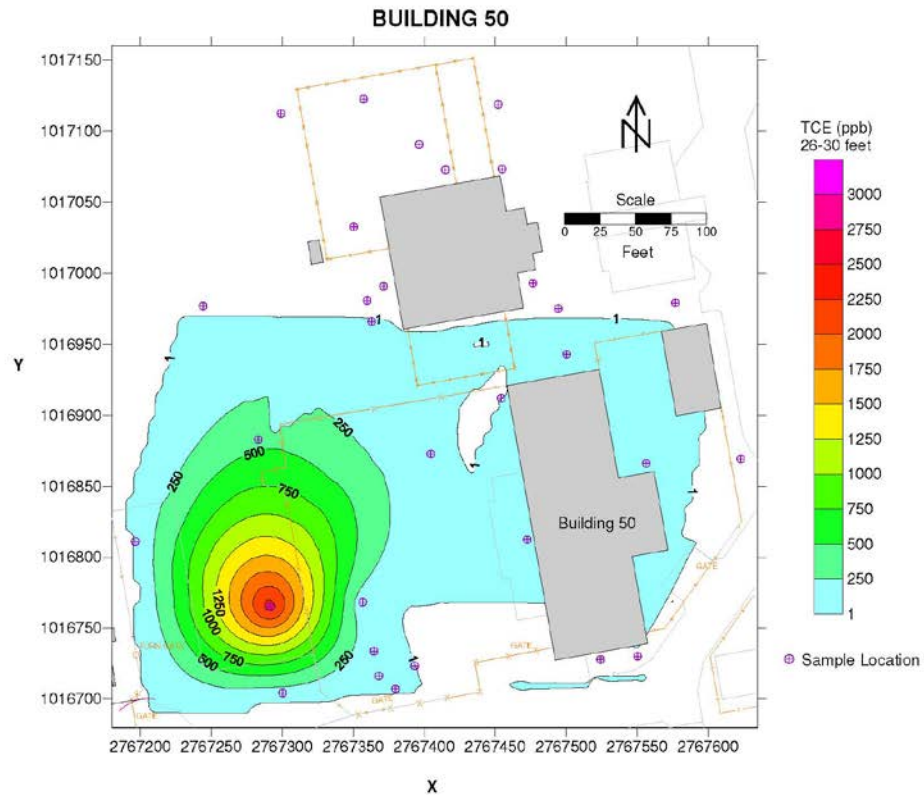


Figure 9. Building 50 Source Area TCE distribution, 26 to 30 feet below ground surface.

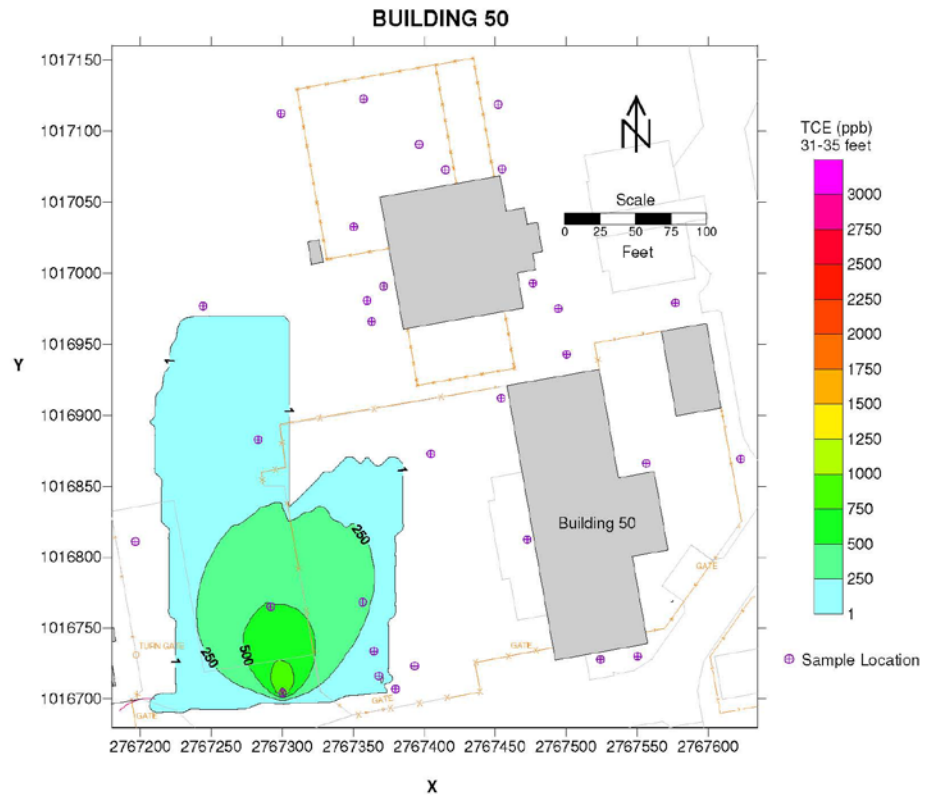


Figure 10. Building 50 Source Area TCE distribution, 31 to 35 feet below ground surface.

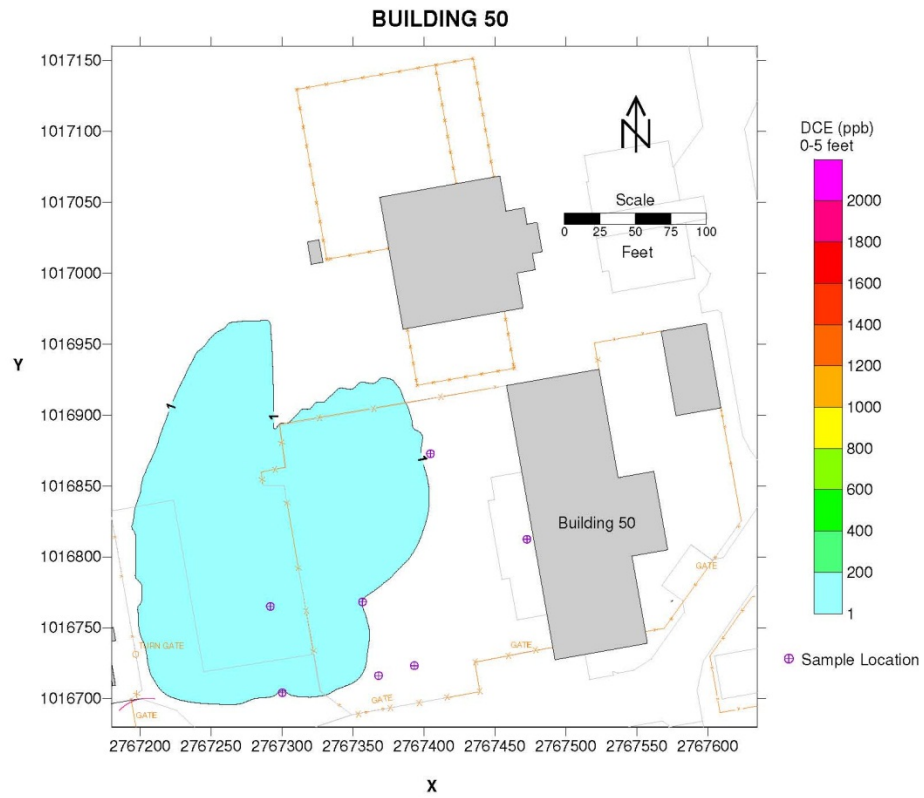


Figure 11. Building 50 Source Area DCE distribution, 0 to 5 feet below ground surface.

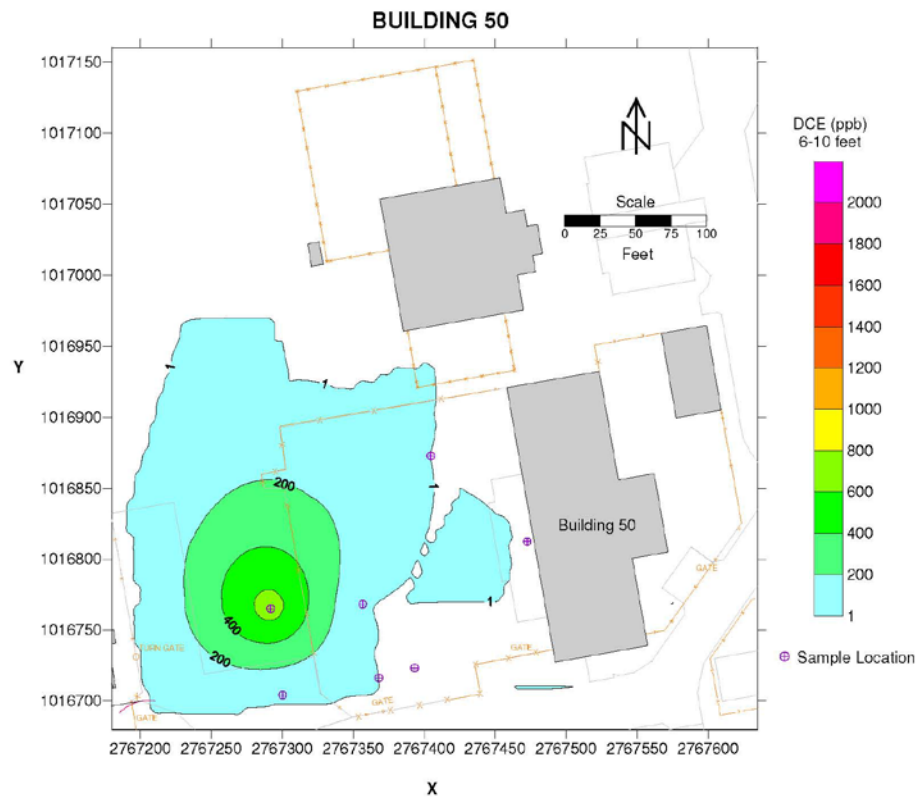


Figure 12. Building 50 Source Area DCE distribution, 6 to 10 feet below ground surface.



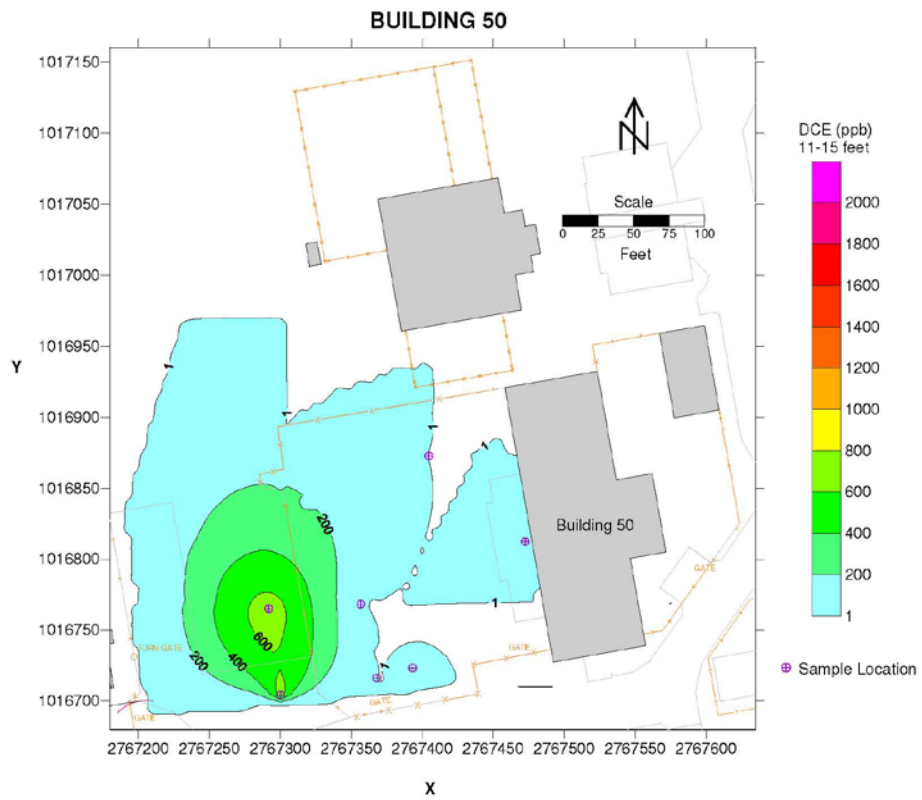


Figure 13. Building 50 Source Area DCE distribution, 11 to 15 feet below ground surface.

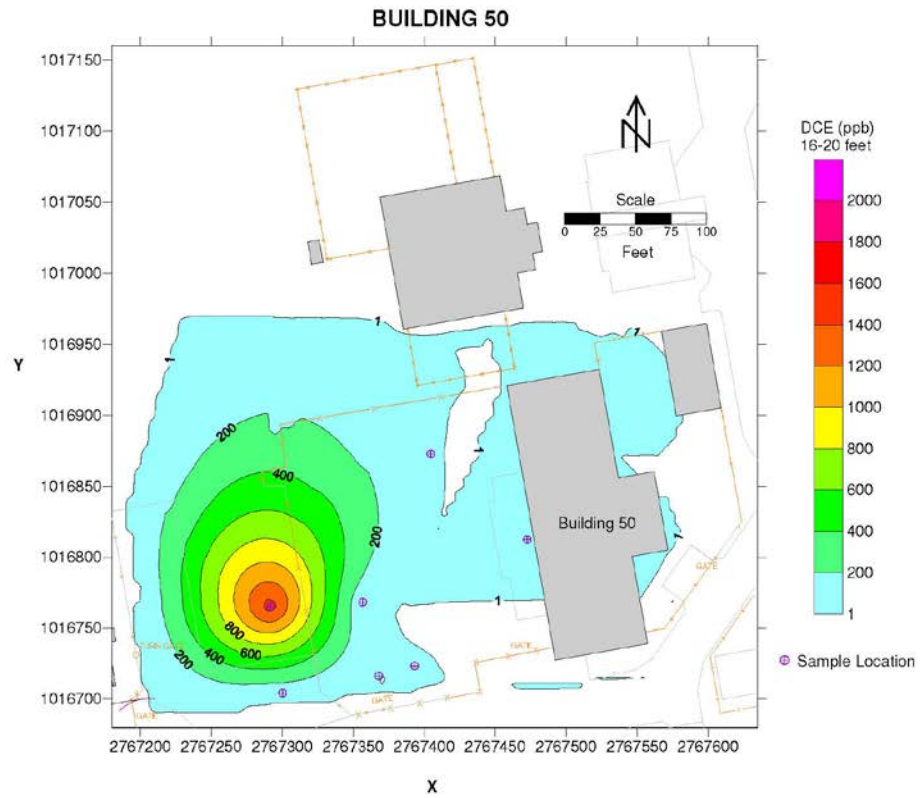


Figure 14. Building 50 Source Area DCE distribution, 16 to 20 feet below ground surface.

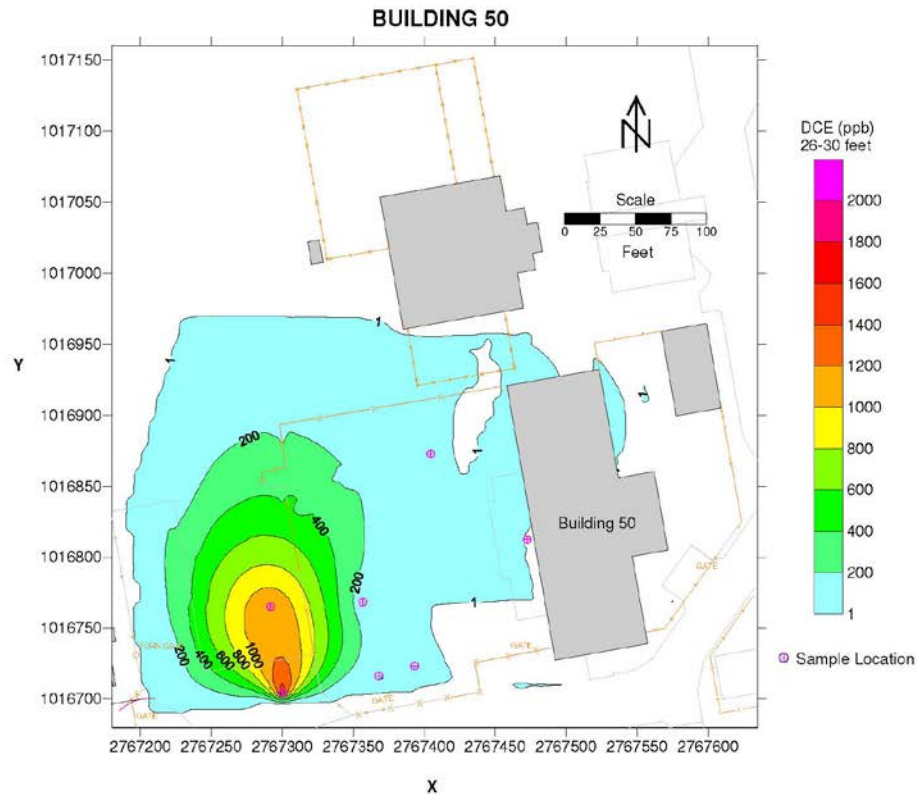


Figure 15. Building 50 Source Area DCE distribution, 26 to 30 feet below ground surface.

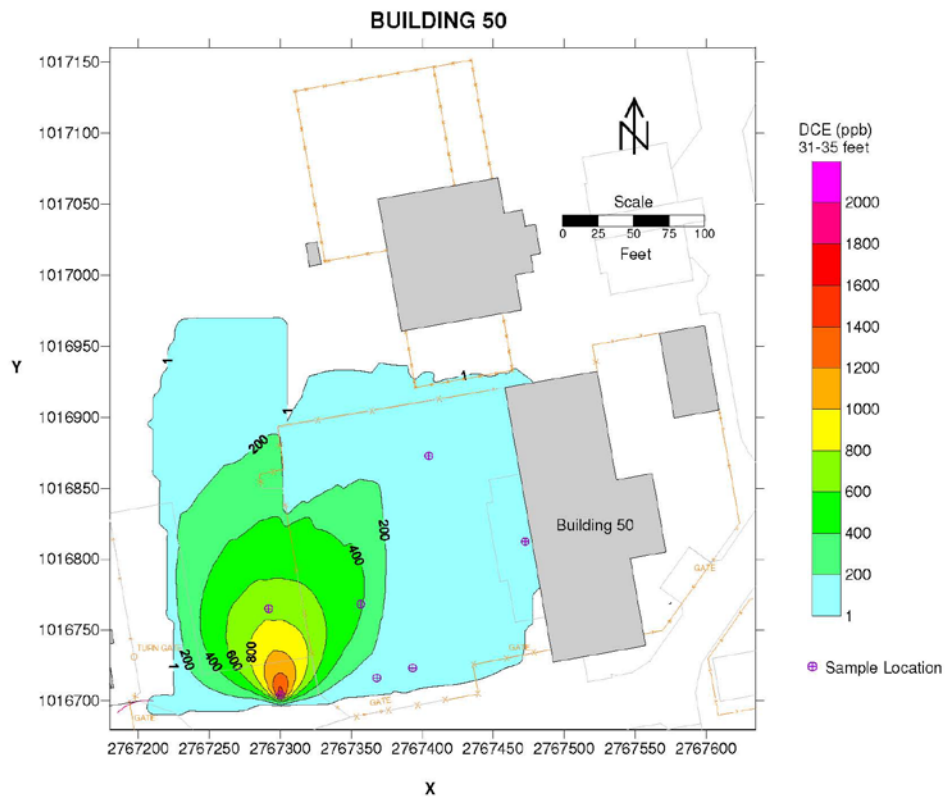


Figure 16. Building 50 Source Area DCE distribution, 31 to 35 feet below ground surface.

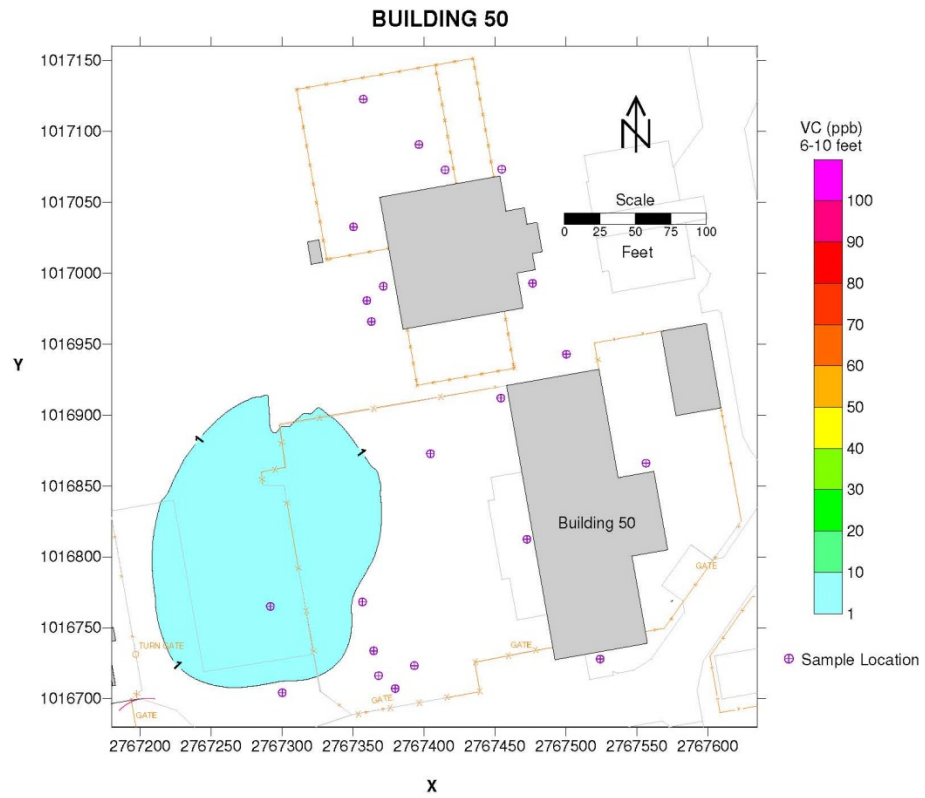


Figure 17. Building 50 Source Area VC distribution, 6 to 10 feet below ground surface.

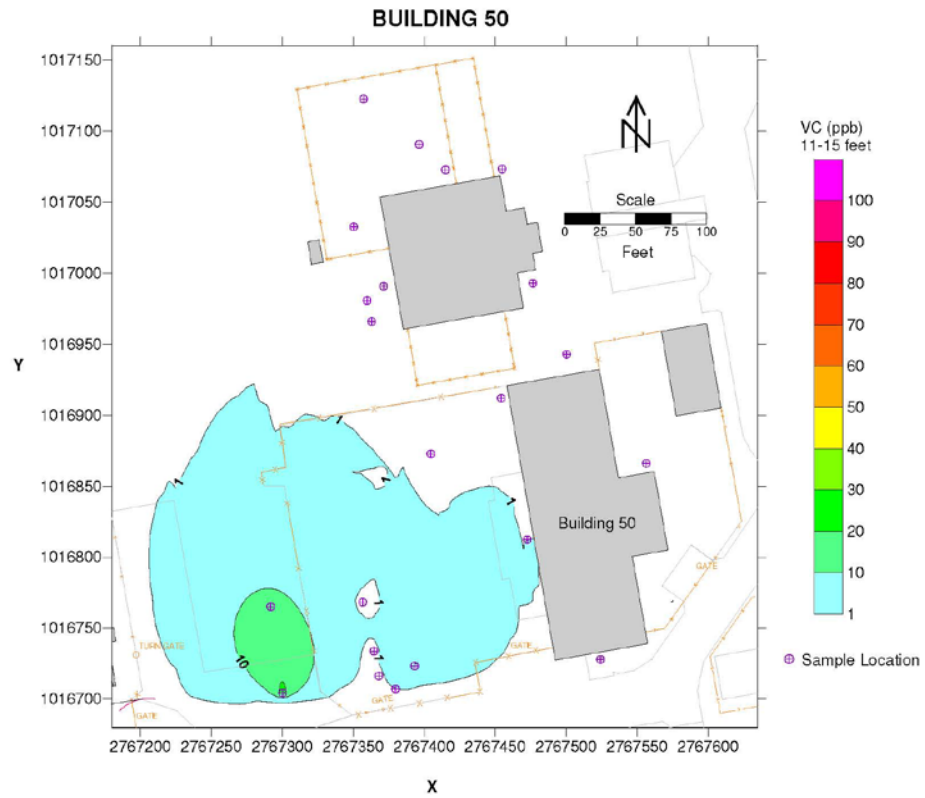


Figure 18. Building 50 Source Area VC distribution, 11 to 15 feet below ground surface.

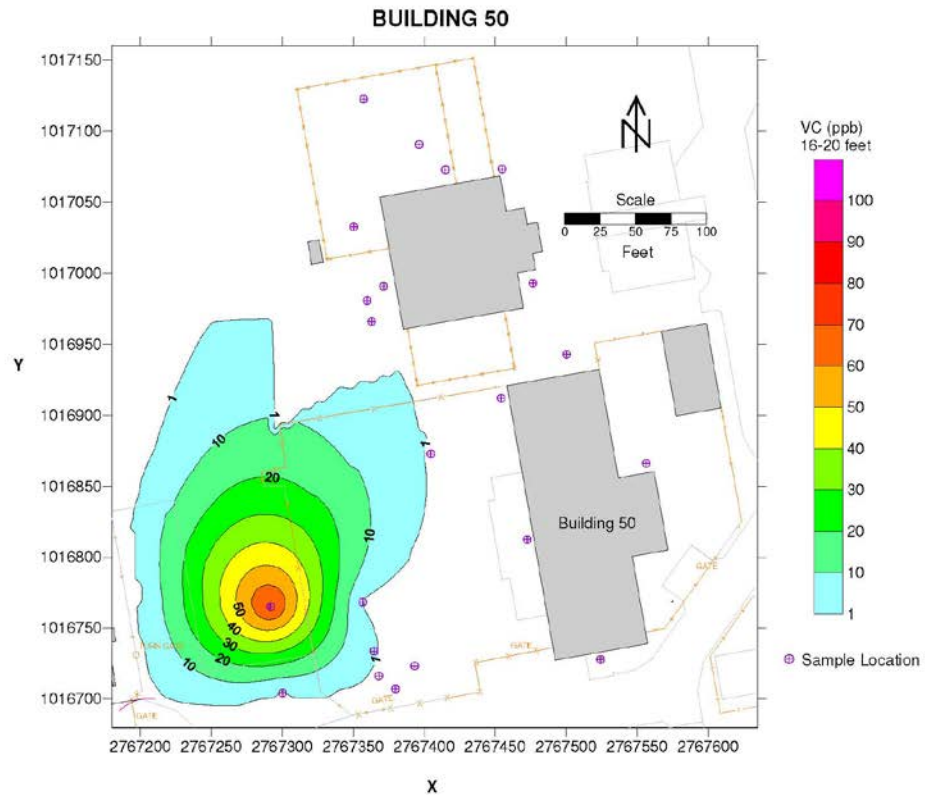


Figure 19. Building 50 Source Area VC distribution, 16 to 20 feet below ground surface.

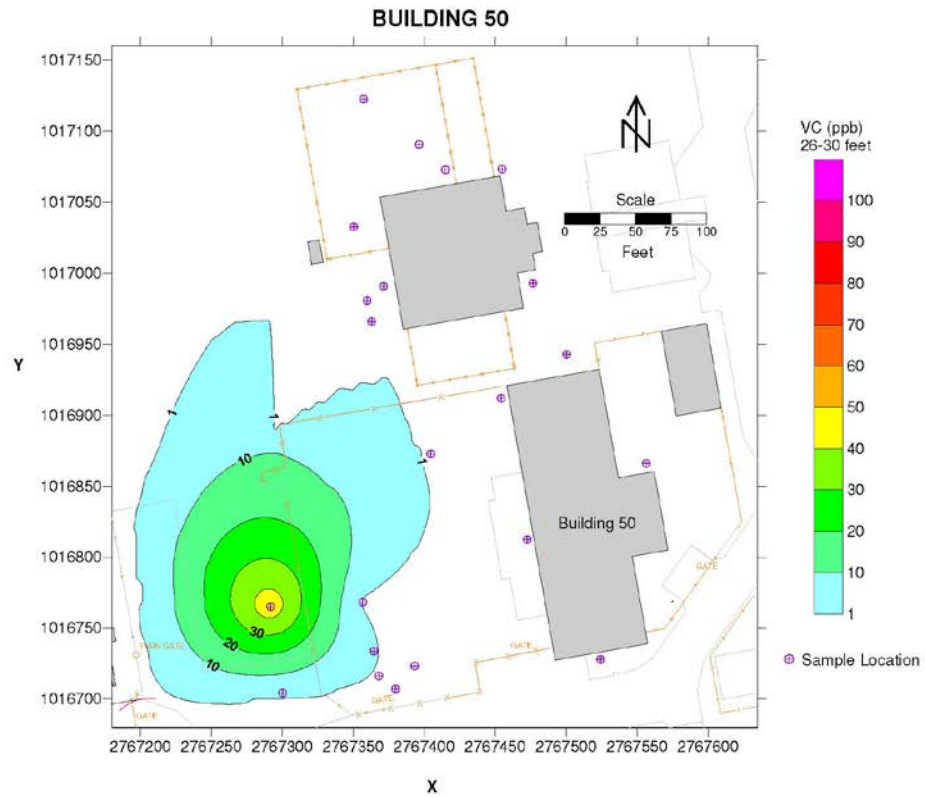
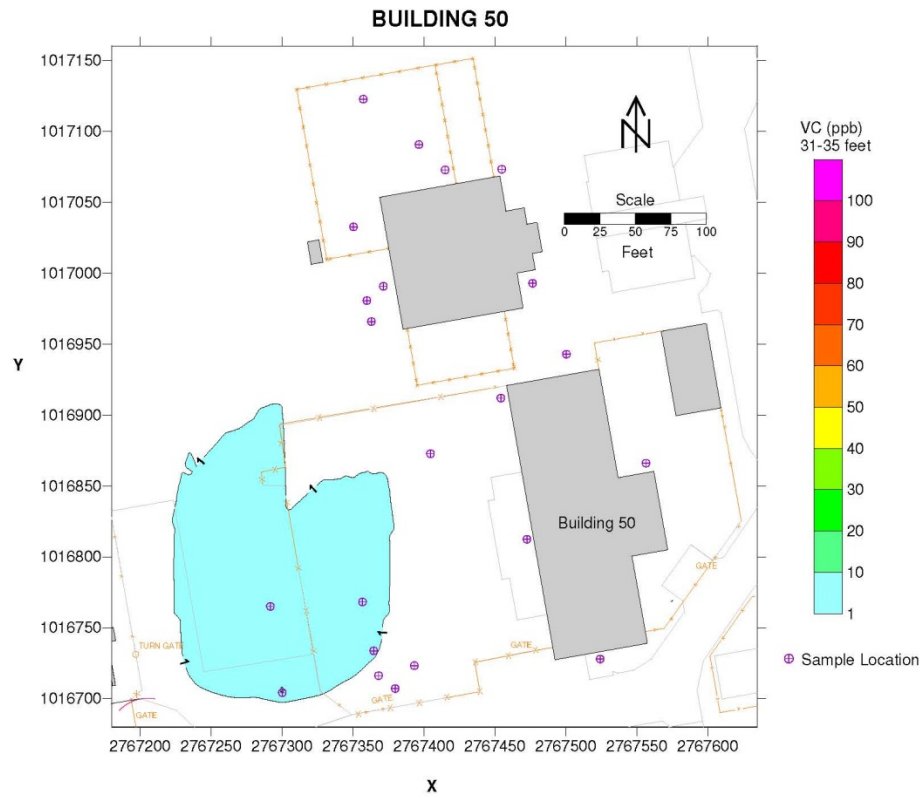
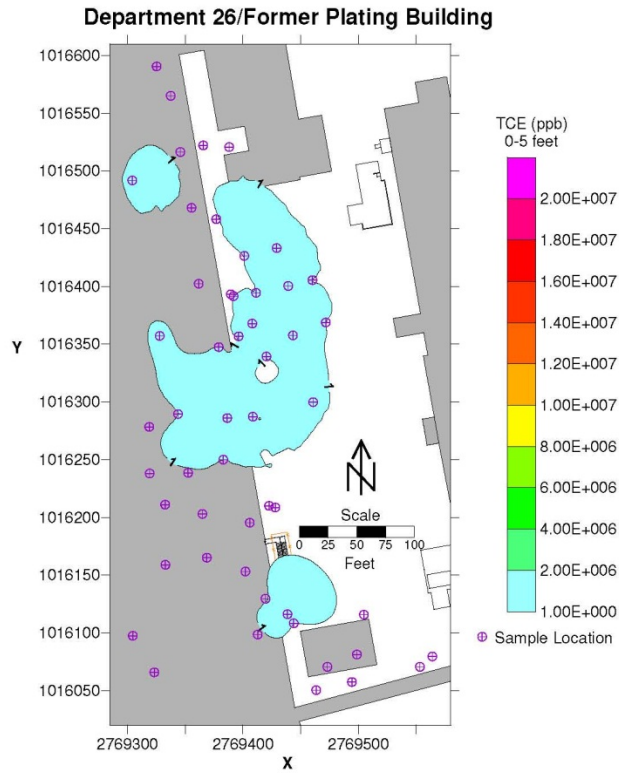


Figure 20. Building 50 Source Area VC distribution, 26 to 30 feet below ground surface.

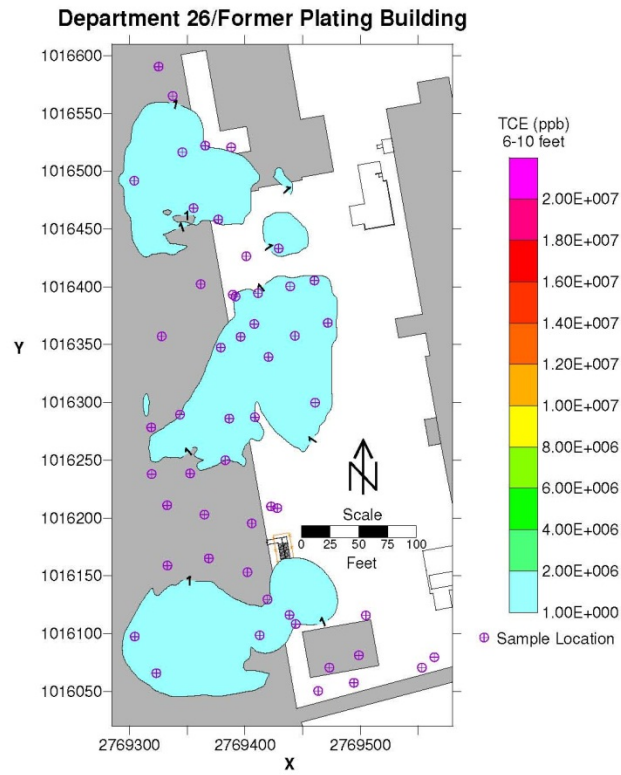




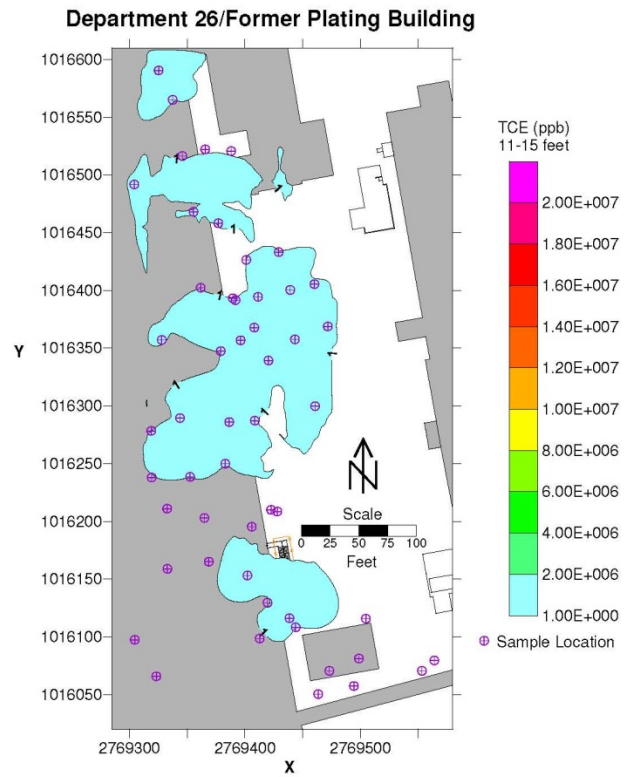
**Figure 21. Building 50 Source Area VC distribution, 31 to 35 feet below ground surface.**



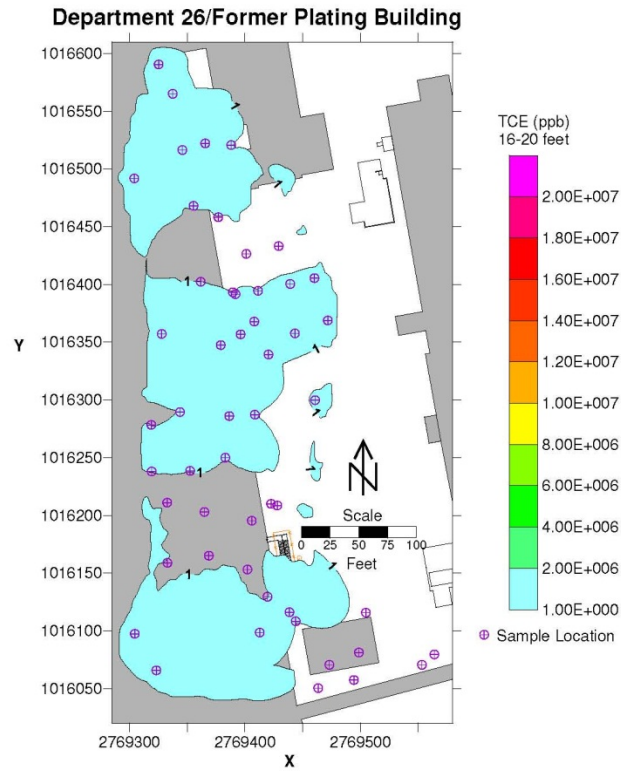
**Figure 22. Department 26 and Former Plating Building Source Area TCE distribution, 0 to 5 feet below ground surface.**



**Figure 23. Department 26 and Former Plating Building Source Area TCE distribution, 6 to 10 feet below ground surface.**



**Figure 24. Department 26 and Former Plating Building Source Area TCE distribution, 11 to 15 feet below ground surface.**



**Figure 25. Department 26 and Former Plating Building Source Area TCE distribution, 16 to 20 feet below ground surface.**

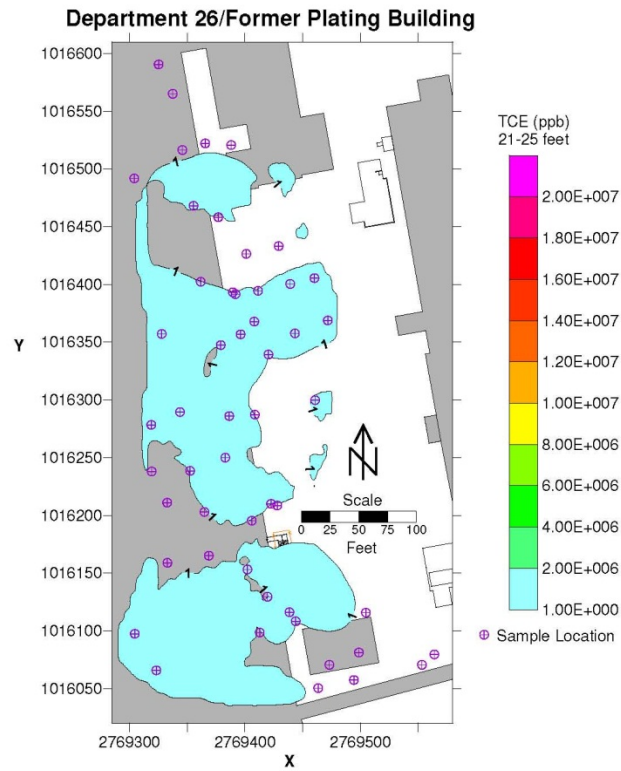


Figure 26. Department 26 and Former Plating Building Source Area TCE distribution, 21 to 25 feet below ground surface.

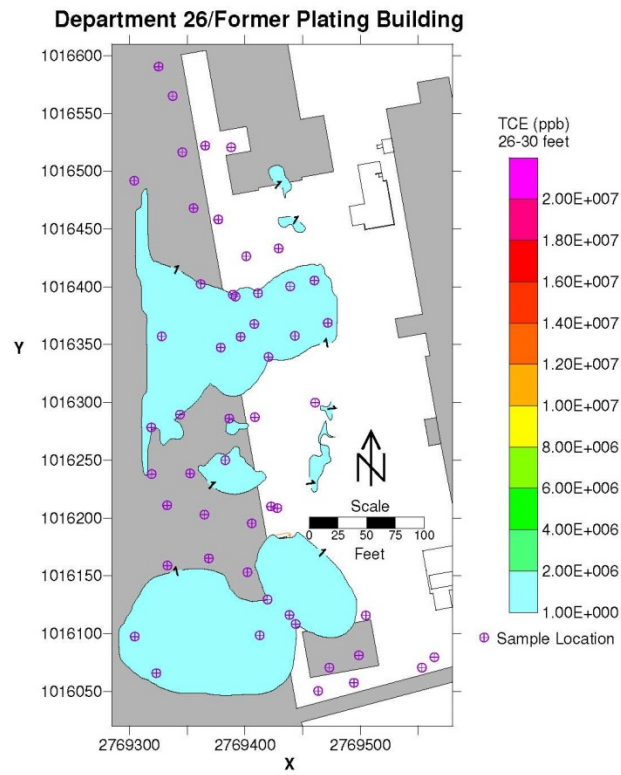
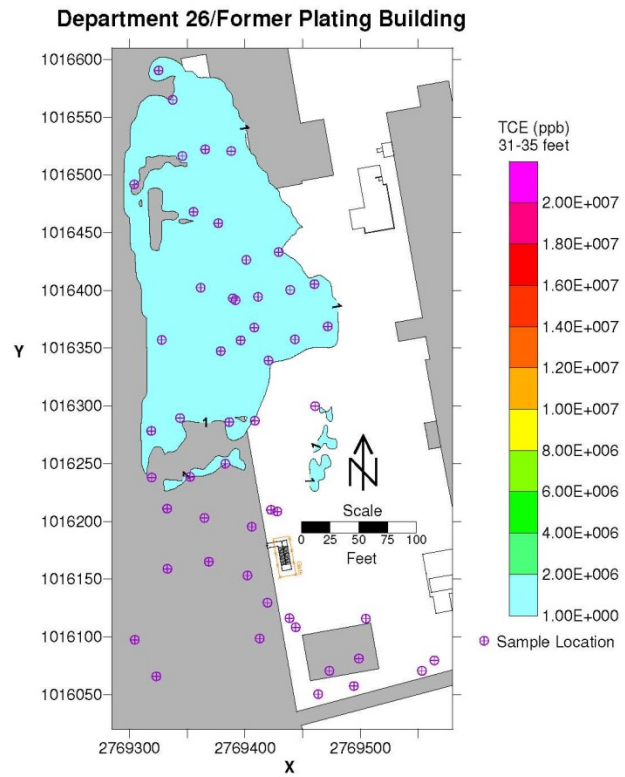
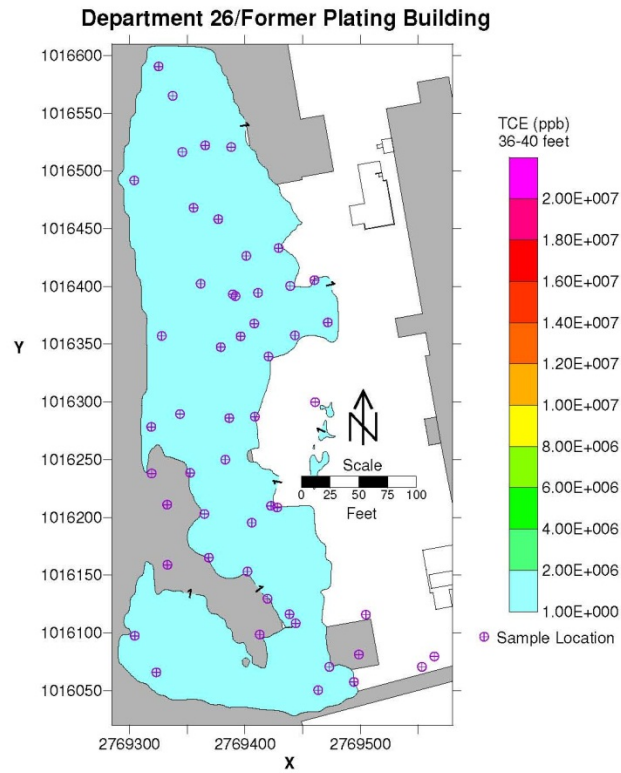


Figure 27. Department 26 and Former Plating Building Source Area TCE distribution, 26 to 30 feet below ground surface.

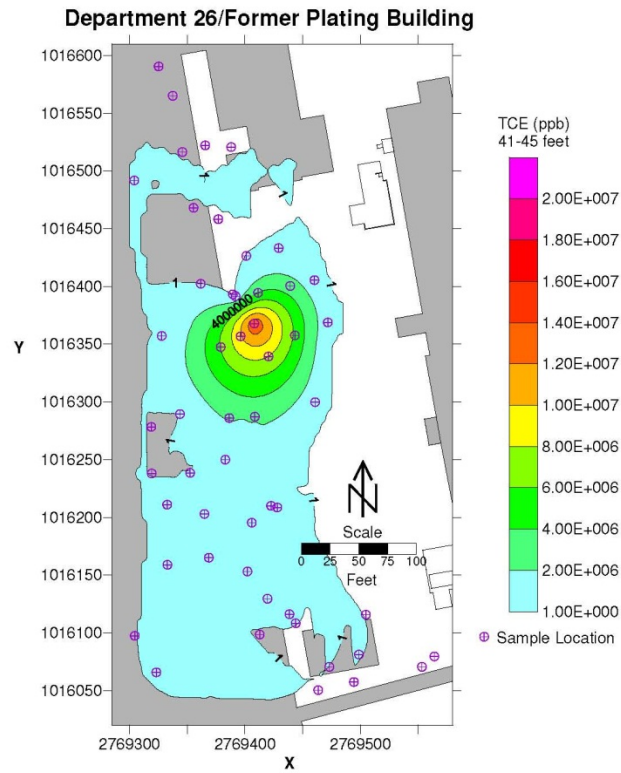


**Figure 28. Department 26 and Former Plating Building Source Area TCE distribution, 31 to 35 feet below ground surface.**

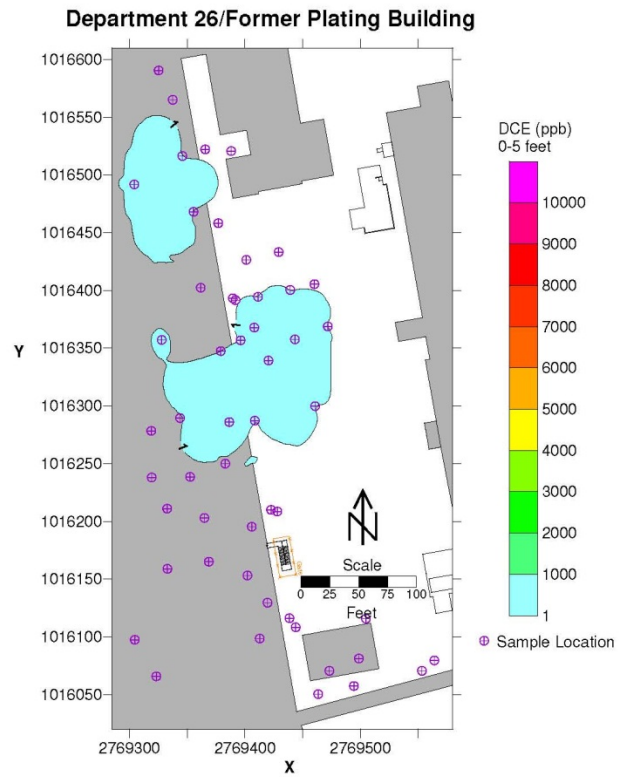




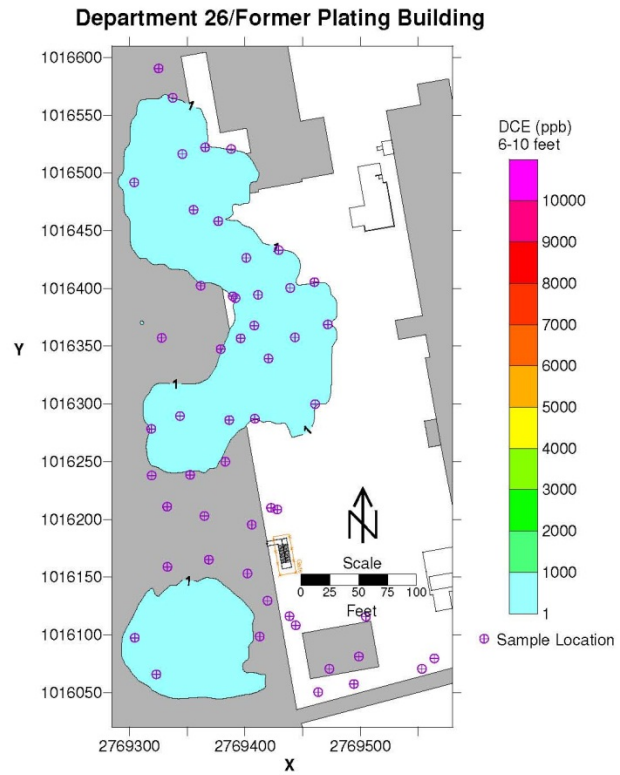
**Figure 29. Department 26 and Former Plating Building Source Area TCE distribution, 36 to 40 feet below ground surface.**



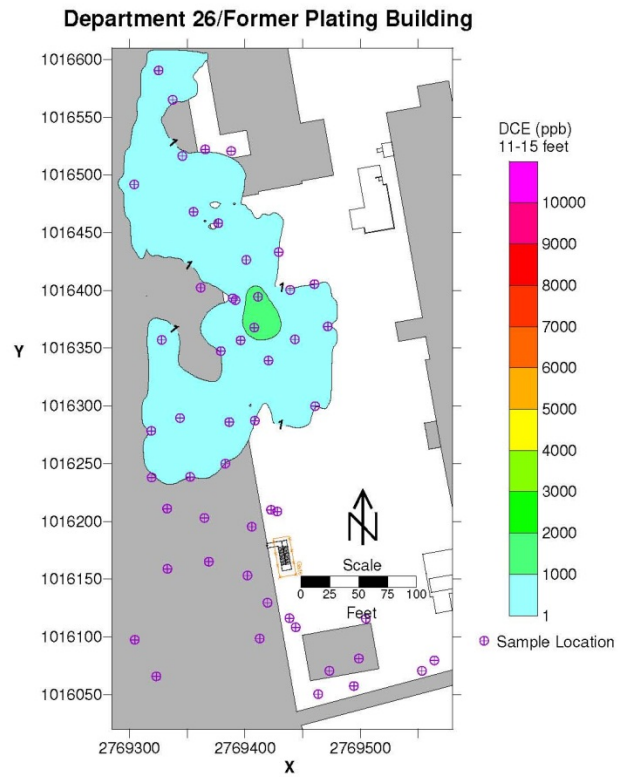
**Figure 30. Department 26 and Former Plating Building Source Area TCE distribution, 41 to 45 feet below ground surface.**



**Figure 31. Department 26 and Former Plating Building Source Area DCE distribution, 0 to 5 feet below ground surface.**



**Figure 32. Department 26 and Former Plating Building Source Area DCE distribution, 6 to 10 feet below ground surface.**



**Figure 33. Department 26 and Former Plating Building Source Area DCE distribution, 11 to 15 feet below ground surface.**

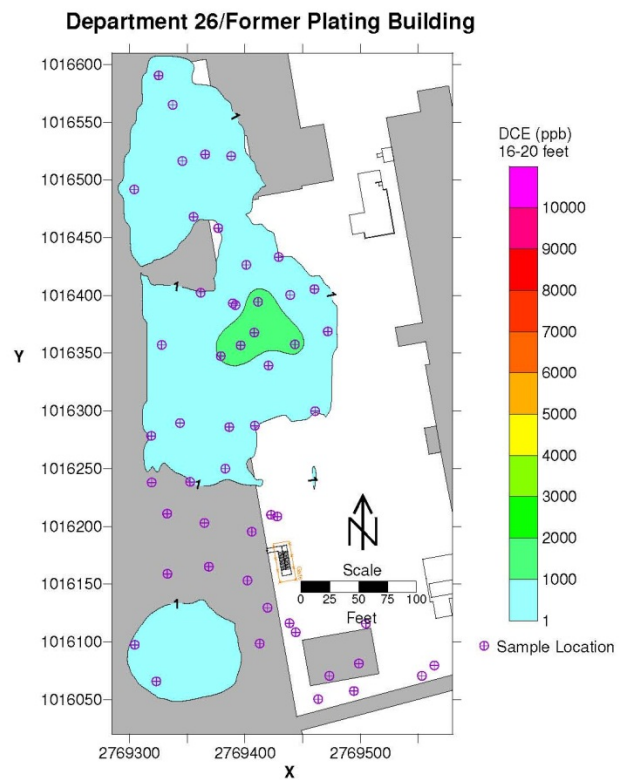
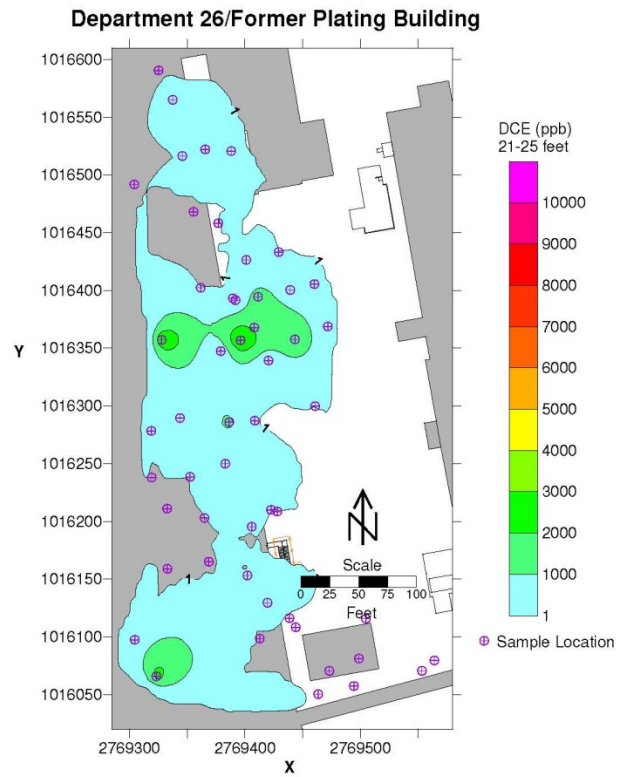


Figure 34. Department 26 and Former Plating Building Source Area DCE distribution, 16 to 20 feet below ground surface.



**Figure 35. Department 26 and Former Plating Building Source Area DCE distribution, 21 to 25 feet below ground surface.**

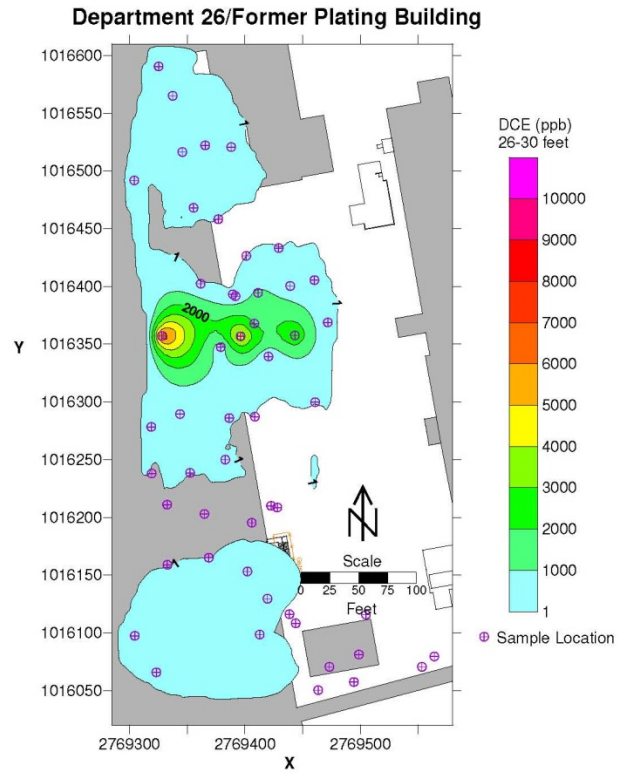
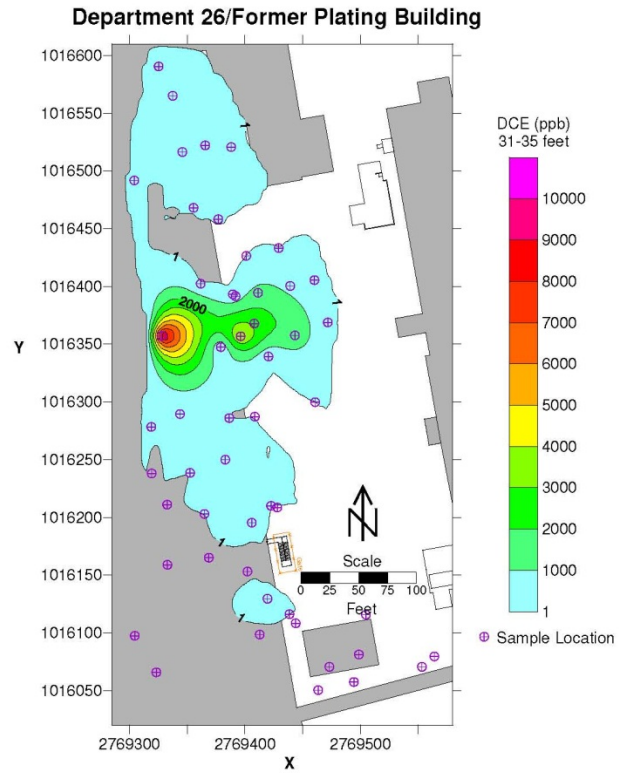
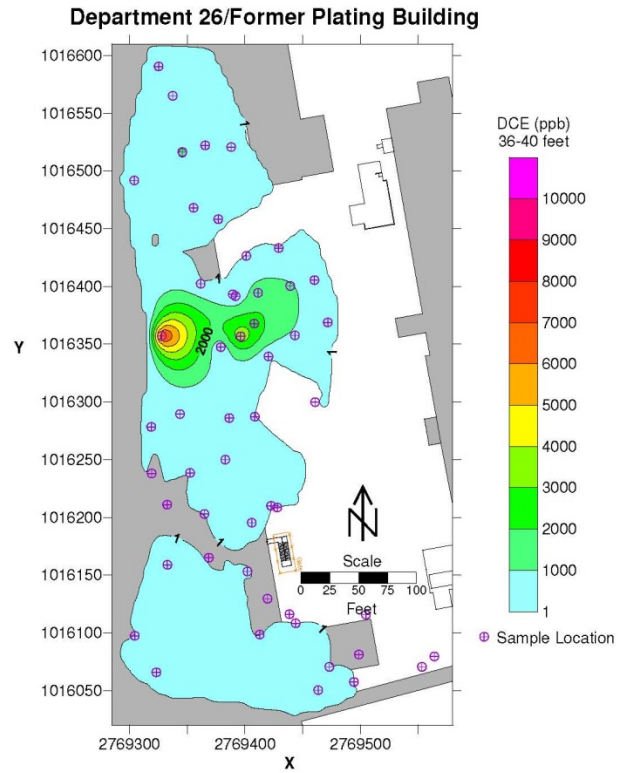


Figure 36. Department 26 and Former Plating Building Source Area DCE distribution, 26 to 30 feet below ground surface.

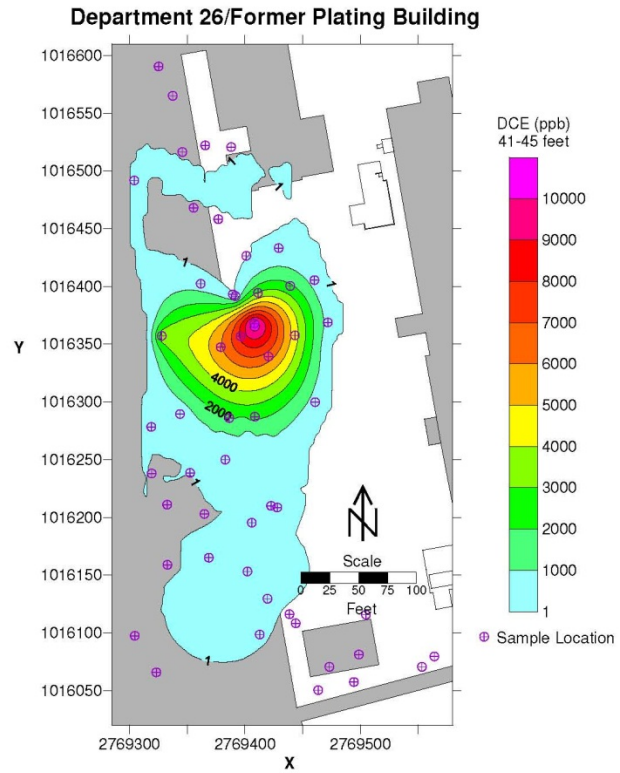




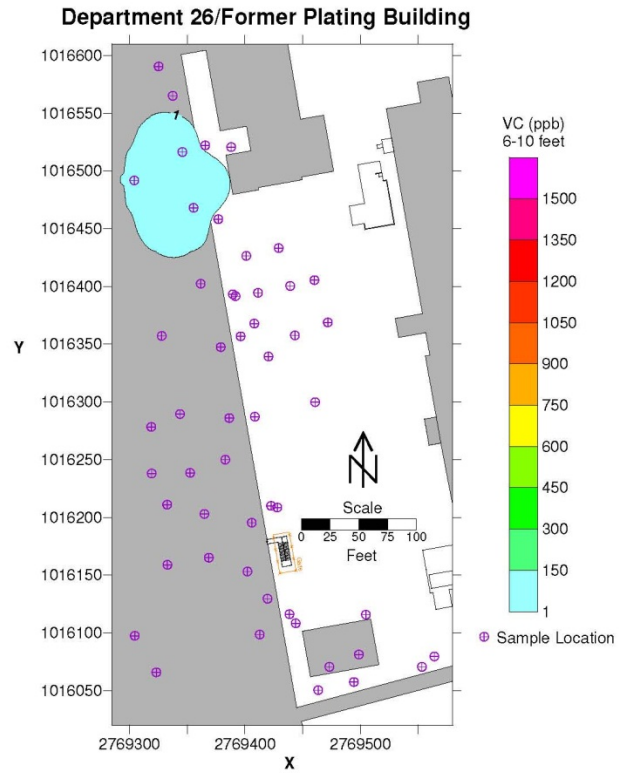
**Figure 37. Department 26 and Former Plating Building Source Area DCE distribution, 31 to 35 feet below ground surface.**



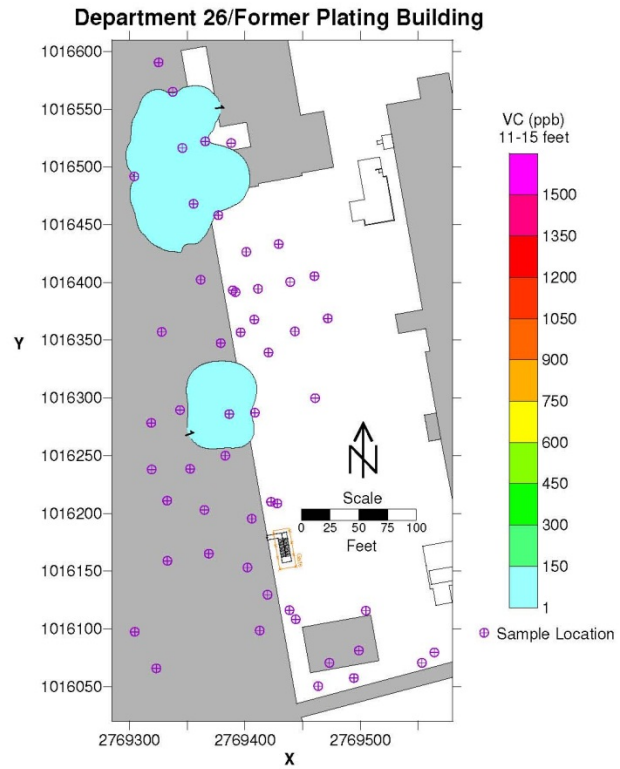
**Figure 38. Department 26 and Former Plating Building Source Area DCE distribution, 36 to 40 feet below ground surface.**



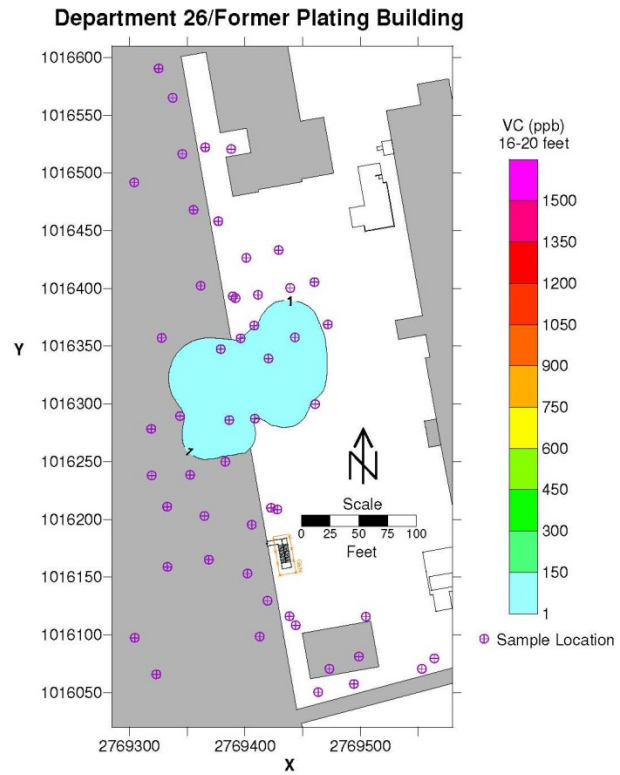
**Figure 39. Department 26 and Former Plating Building Source Area DCE distribution, 41 to 45 feet below ground surface.**



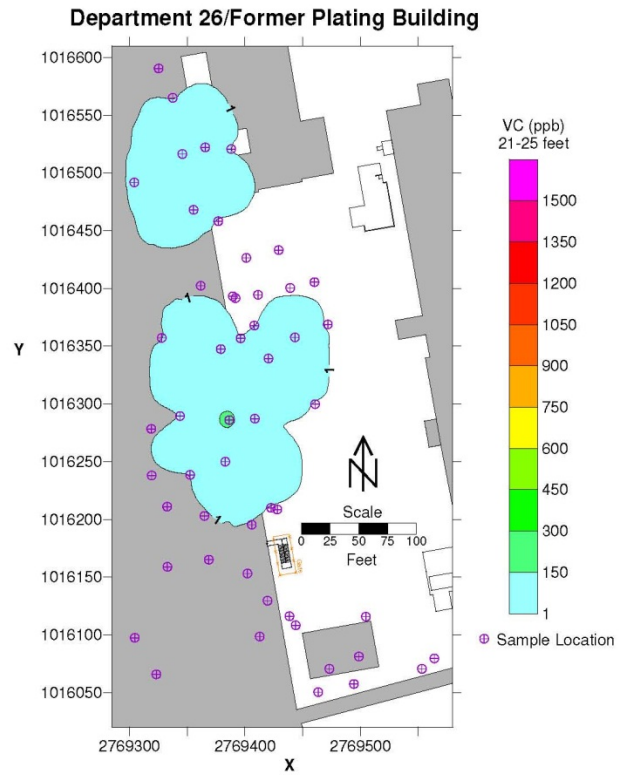
**Figure 40. Department 26 and Former Plating Building Source Area VC distribution, 6 to 10 feet below ground surface.**



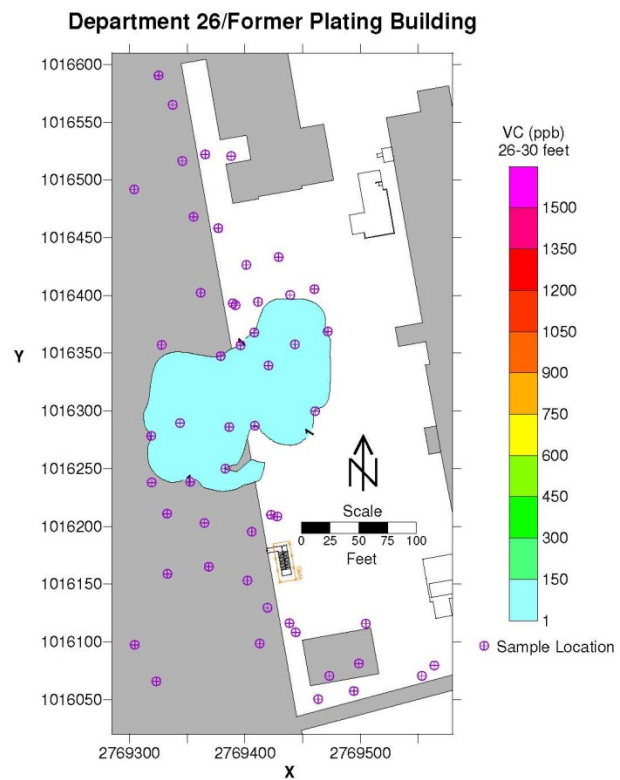
**Figure 41. Department 26 and Former Plating Building Source Area VC distribution, 11 to 15 feet below ground surface.**



**Figure 42. Department 26 and Former Plating Building Source Area VC distribution, 16 to 20 feet below ground surface.**

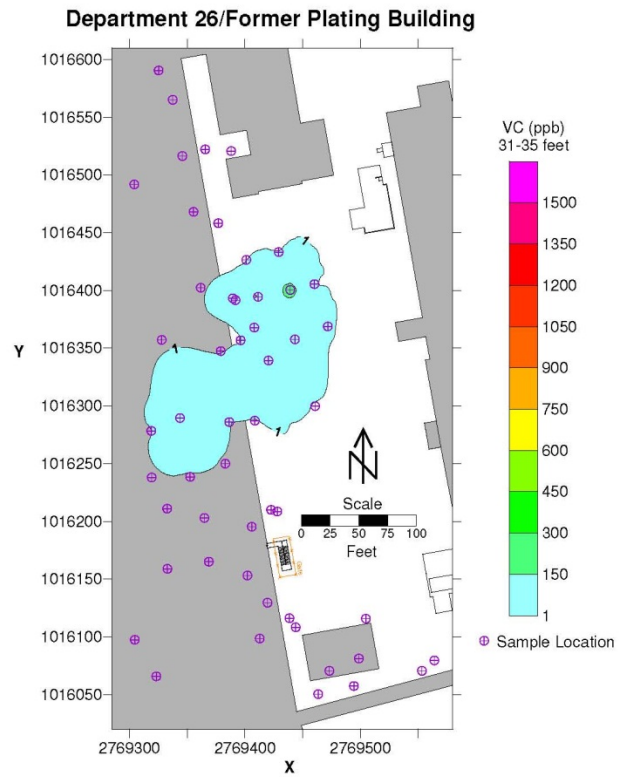


**Figure 43. Department 26 and Former Plating Building Source Area VC distribution, 21 to 25 feet below ground surface.**

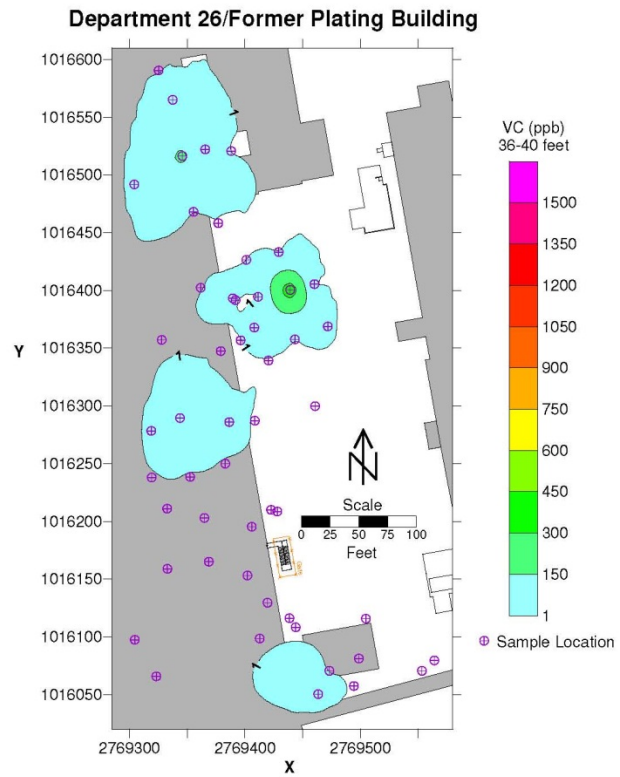


**Figure 44. Department 26 and Former Plating Building Source Area VC distribution, 26 to 30 feet below ground surface.**

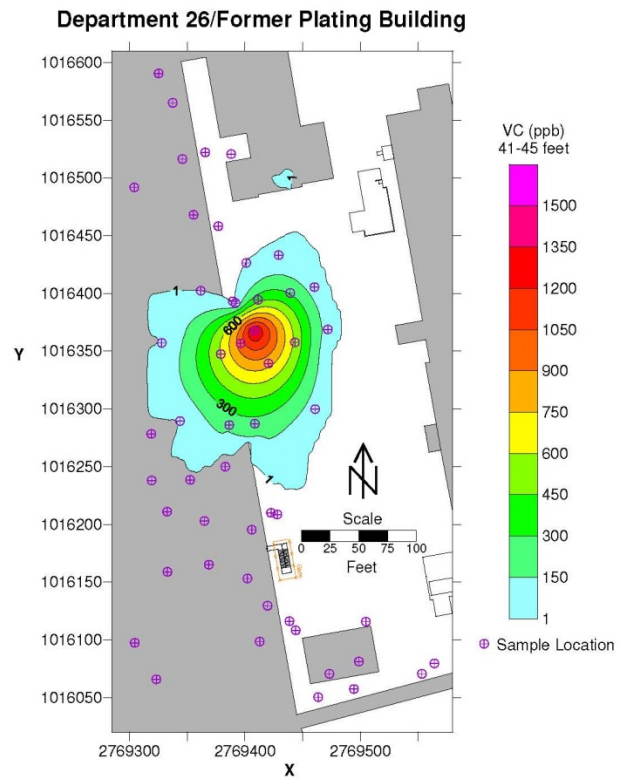




**Figure 45. Department 26 and Former Plating Building Source Area VC distribution, 31 to 35 feet below ground surface.**



**Figure 46. Department 26 and Former Plating Building Source Area VC distribution, 36 to 40 feet below ground surface.**



**Figure 47. Department 26 and Former Plating Building Source Area VC distribution, 41 to 45 feet below ground surface.**

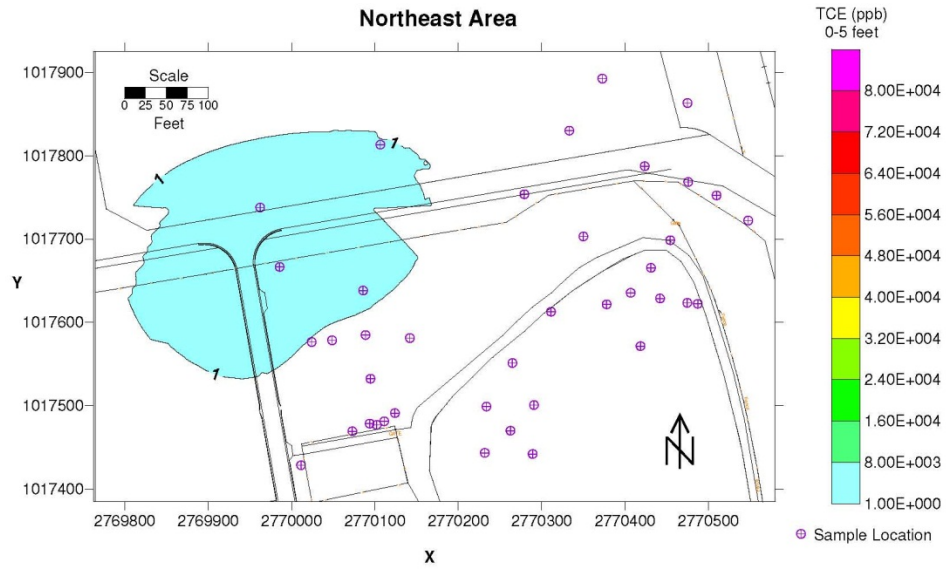


Figure 48. Northeast Area Source Area TCE distribution, 0 to 5 feet below ground surface.

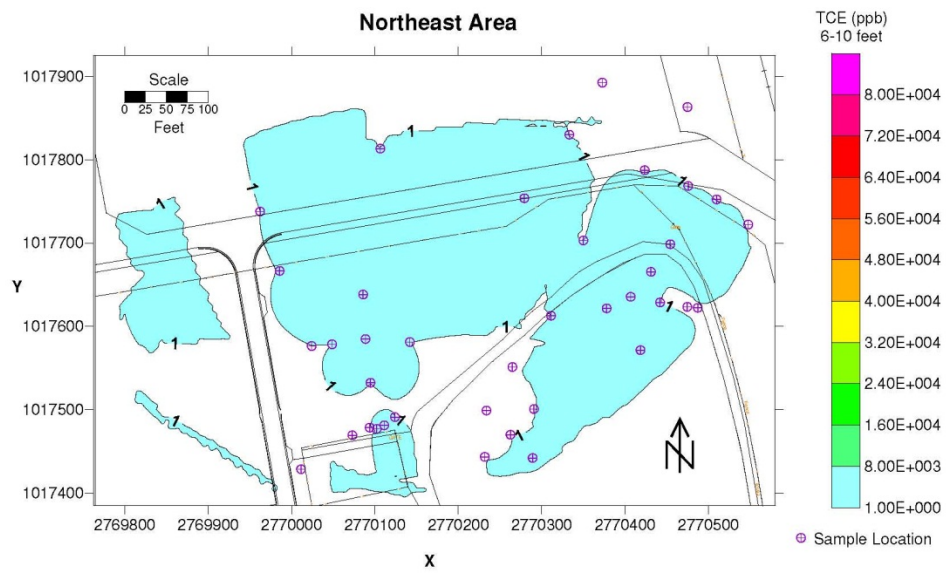


Figure 49. Northeast Area Source Area TCE distribution, 6 to 10 feet below ground surface.

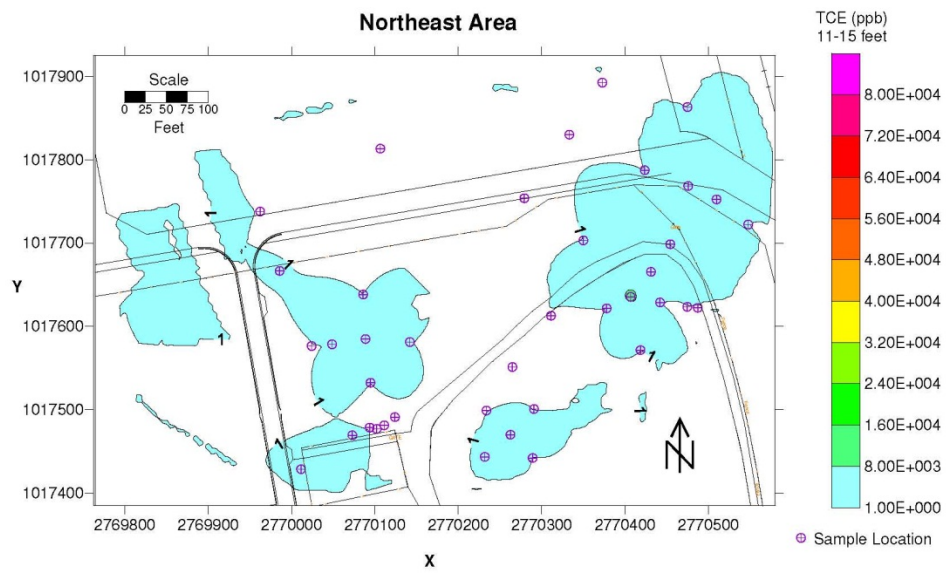


Figure 50. Northeast Area Source Area TCE distribution, 11 to 15 feet below ground surface.

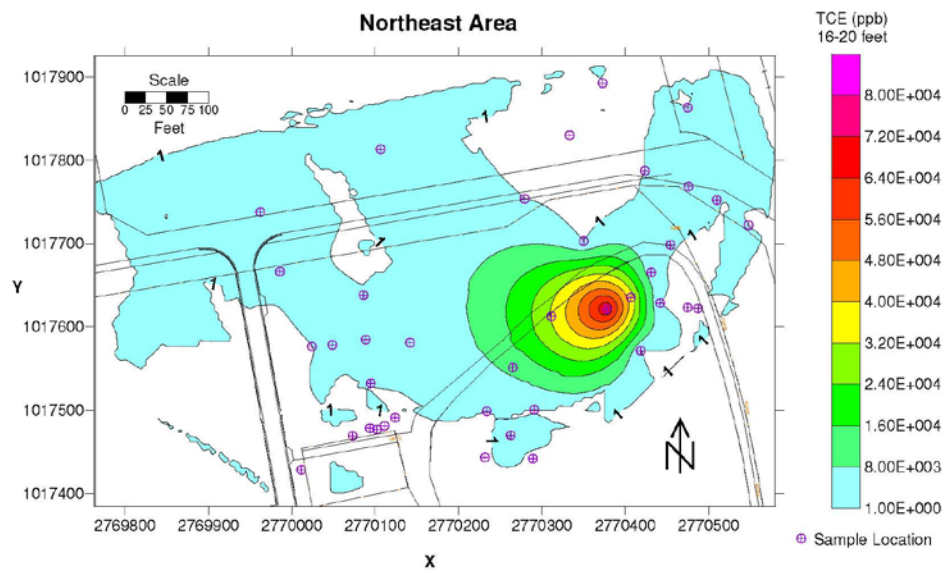


Figure 51. Northeast Area Source Area TCE distribution, 16 to 20 feet below ground surface.

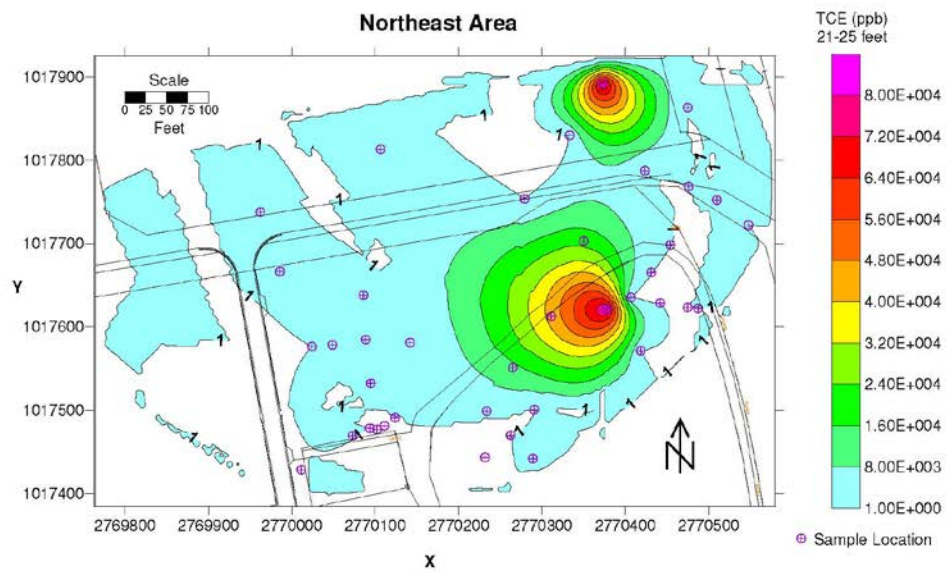


Figure 52. Northeast Area Source Area TCE distribution, 21 to 25 feet below ground surface.



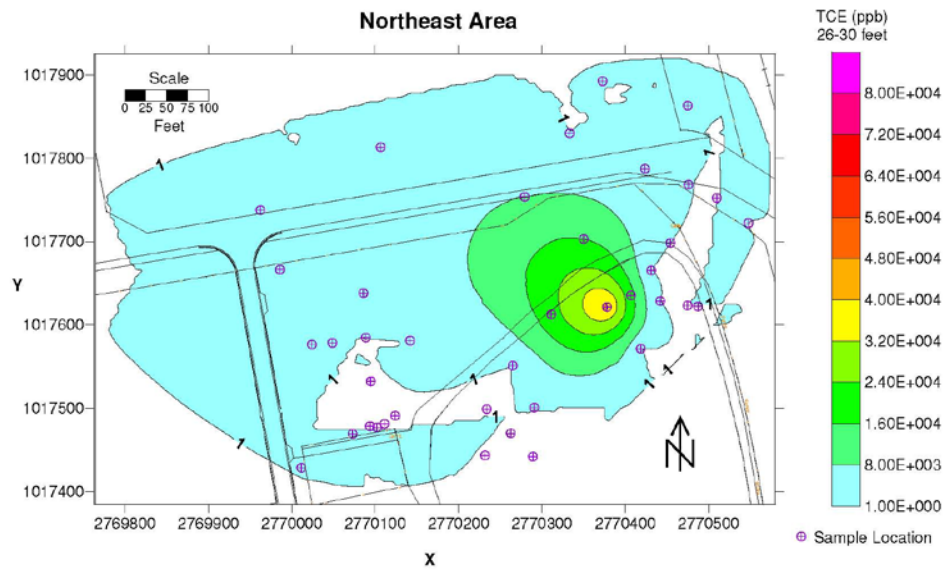


Figure 53. Northeast Area Source Area TCE distribution, 26 to 30 feet below ground surface.

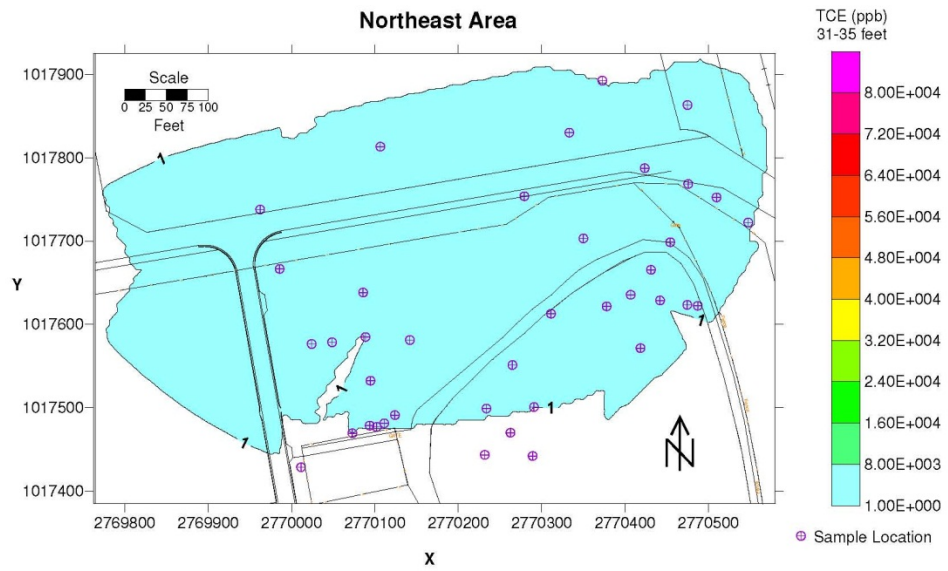


Figure 54. Northeast Area Source Area TCE distribution, 31 to 35 feet below ground surface.

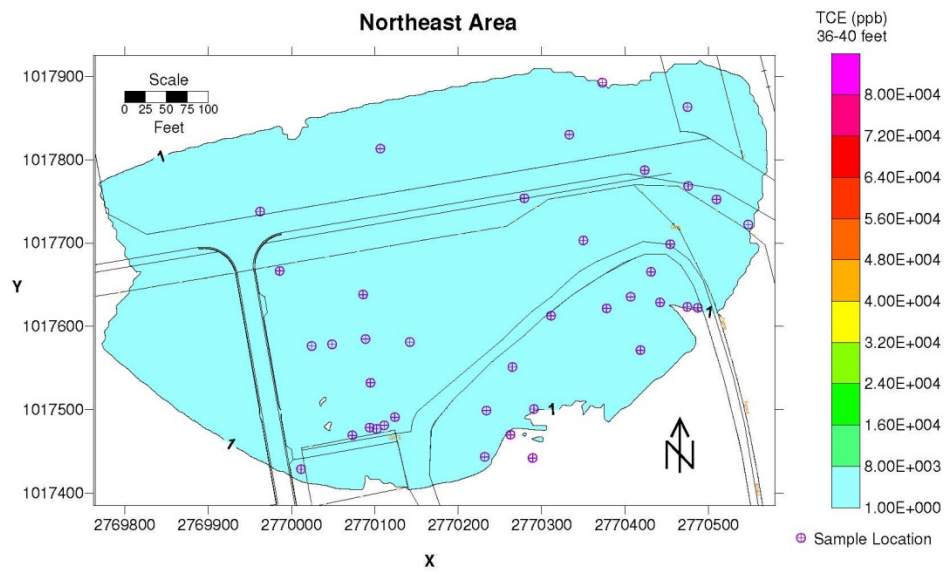


Figure 55. Northeast Area Source Area TCE distribution, 36 to 40 feet below ground surface.

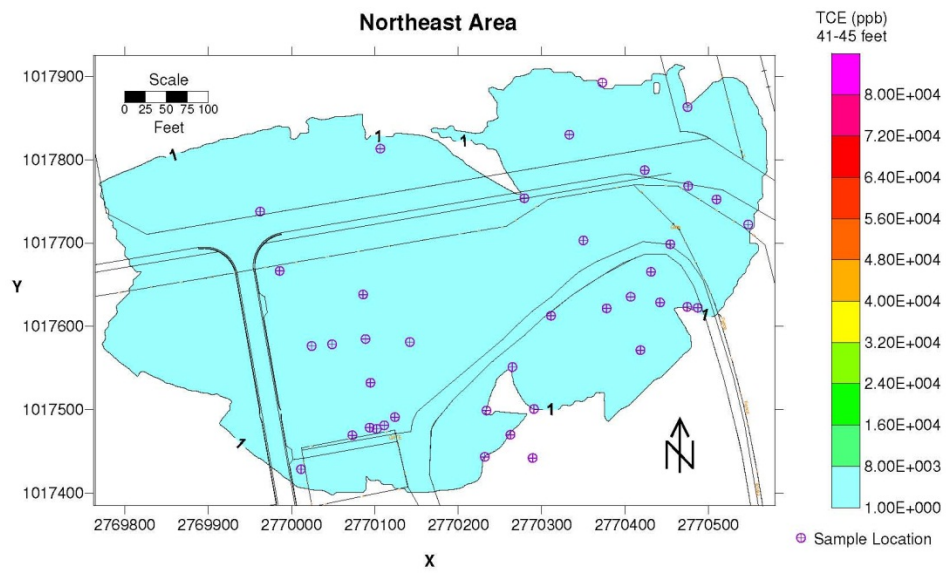


Figure 56. Northeast Area Source Area TCE distribution, 41 to 45 feet below ground surface.

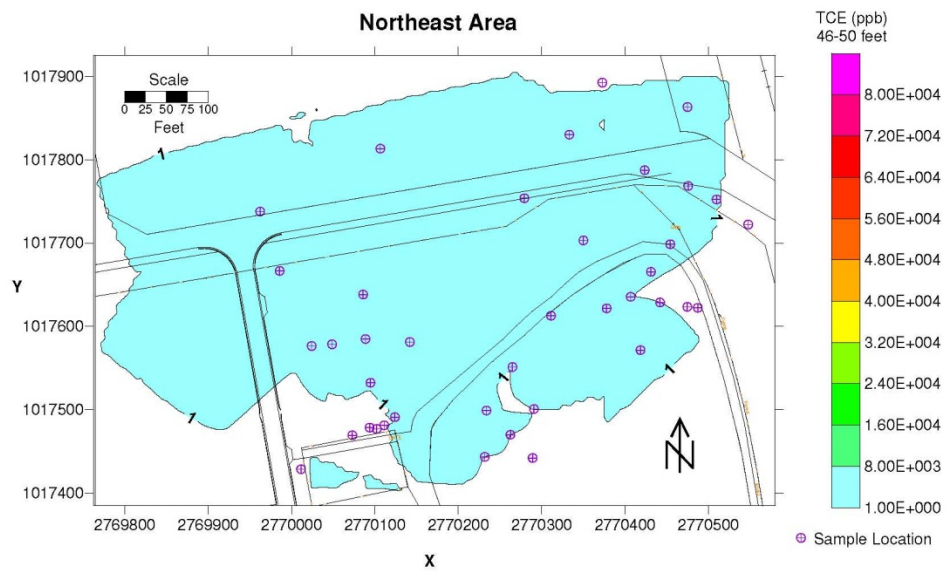


Figure 57. Northeast Area Source Area TCE distribution, 46 to 50 feet below ground surface.

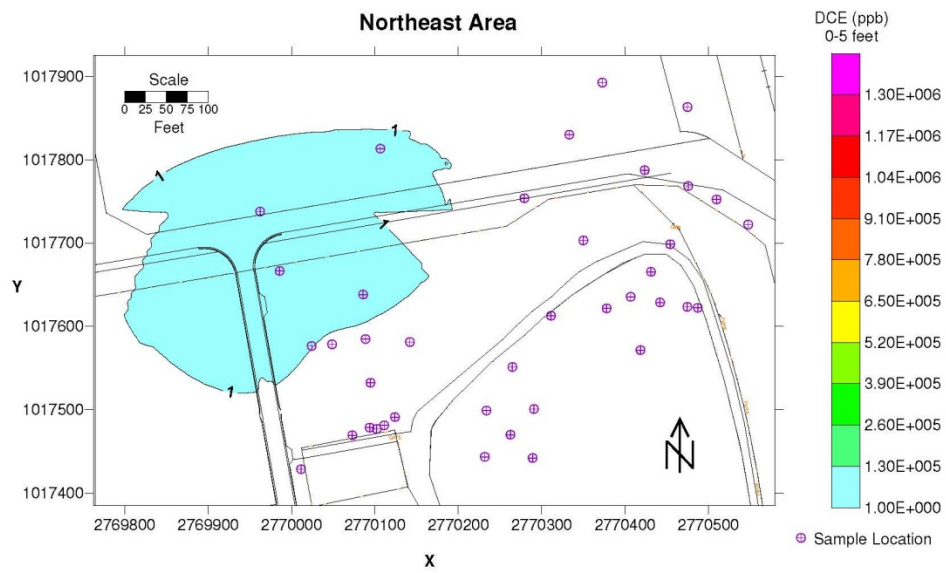


Figure 58. Northeast Area Source Area DCE distribution, 0 to 5 feet below ground surface.

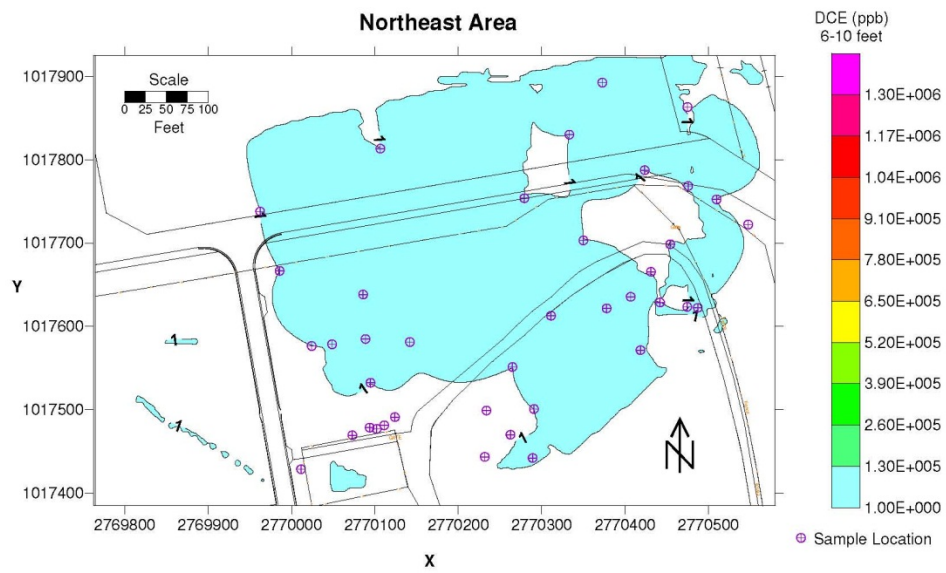


Figure 59. Northeast Area Source Area DCE distribution, 6 to 10 feet below ground surface.

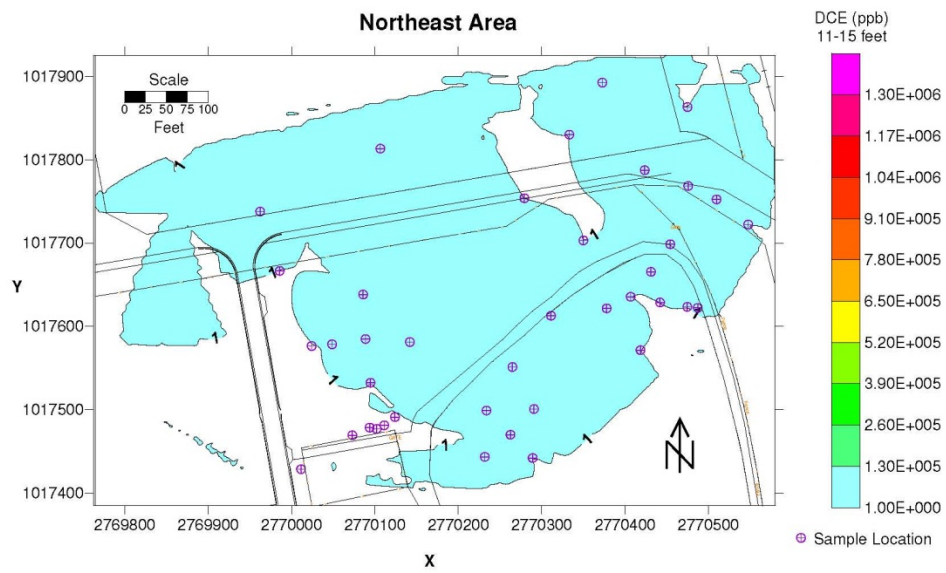


Figure 60. Northeast Area Source Area DCE distribution, 11 to 15 feet below ground surface.



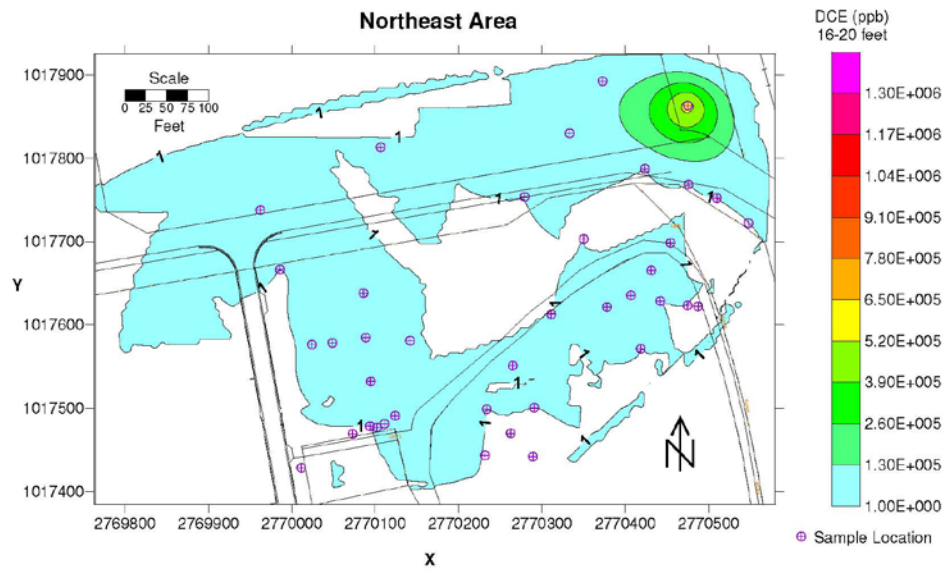


Figure 61. Northeast Area Source Area DCE distribution, 16 to 20 feet below ground surface.

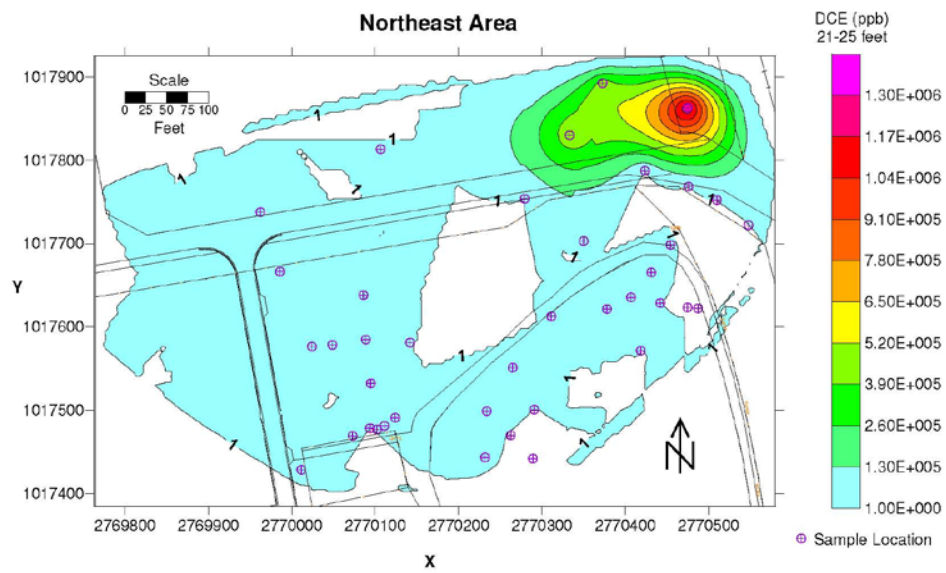


Figure 62. Northeast Area Source Area DCE distribution, 21 to 25 feet below ground surface.

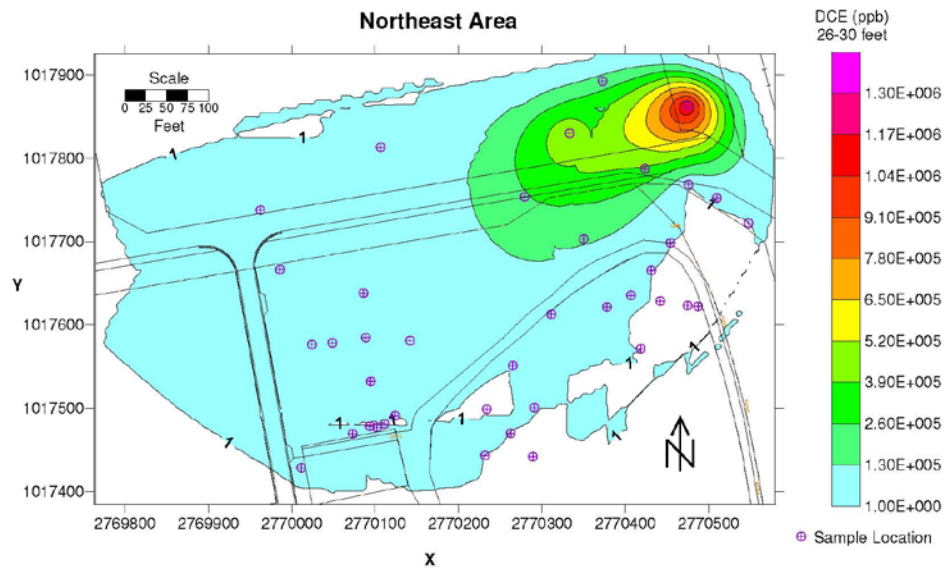


Figure 63. Northeast Area Source Area DCE distribution, 26 to 30 feet below ground surface.

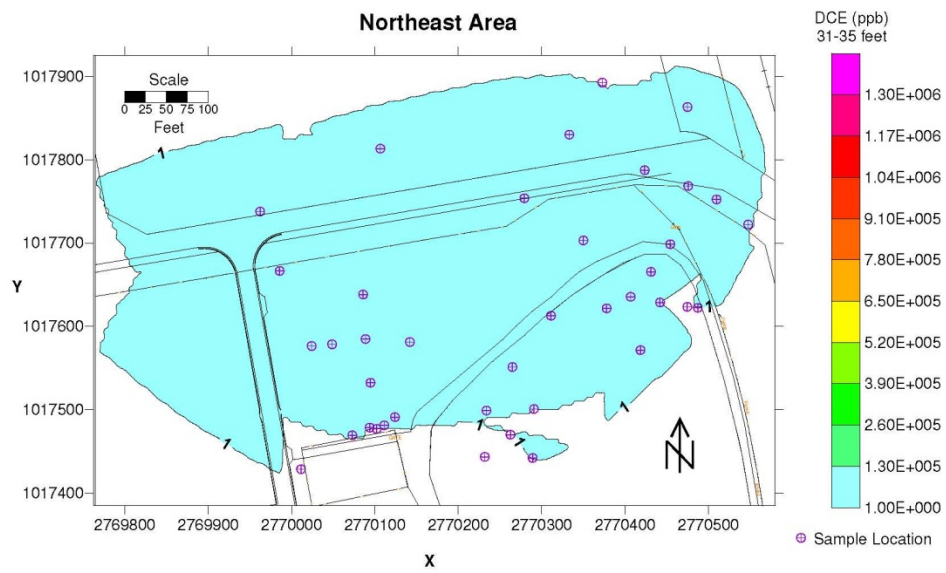


Figure 64. Northeast Area Source Area TCE distribution, 31 to 35 feet below ground surface.

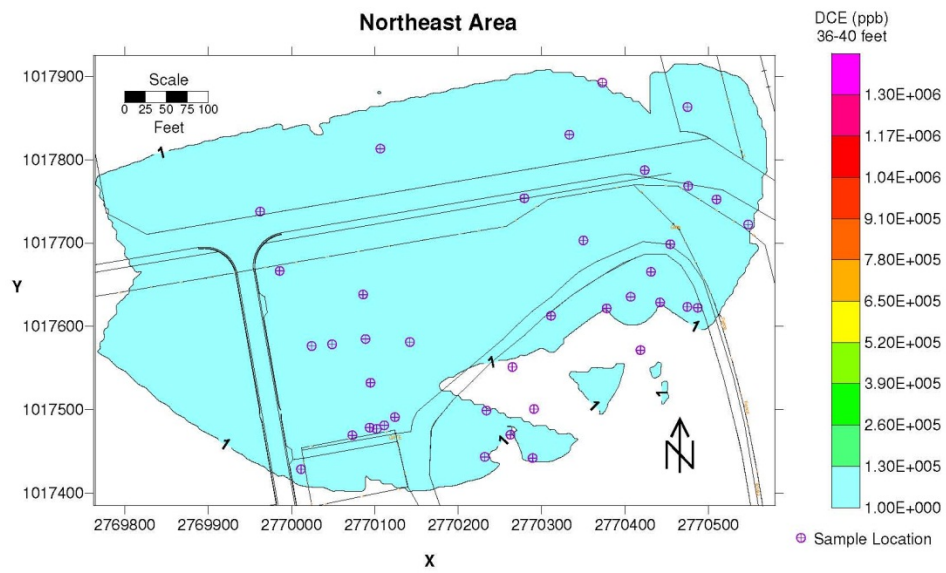


Figure 65. Northeast Area Source Area DCE distribution, 36 to 40 feet below ground surface.

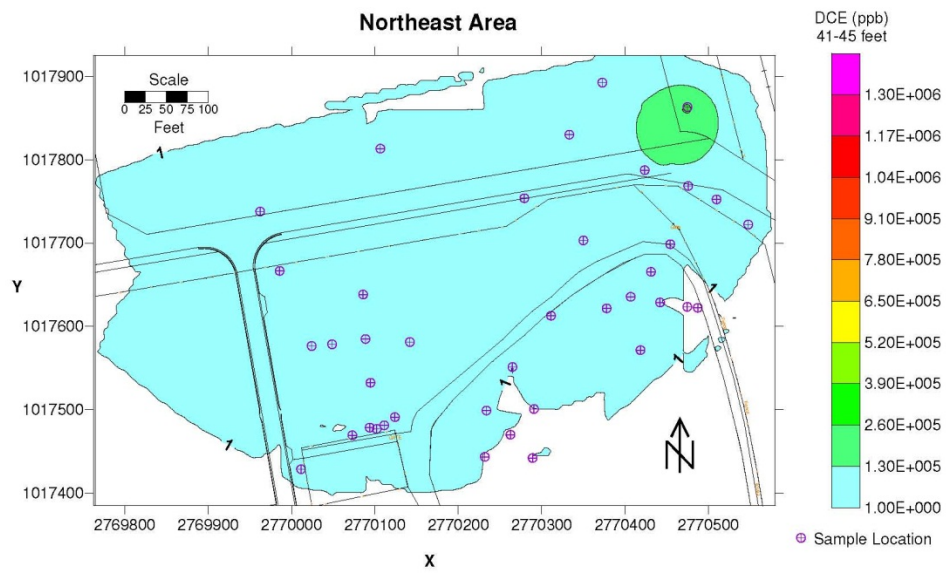


Figure 66. Northeast Area Source Area DCE distribution, 41 to 45 feet below ground surface.

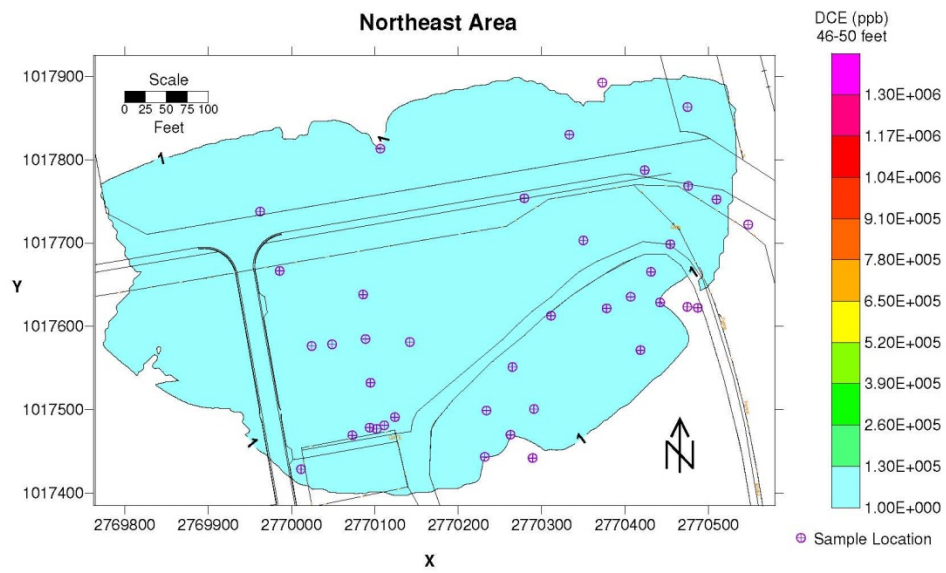


Figure 67. Northeast Area Source Area DCE distribution, 46 to 50 feet below ground surface.

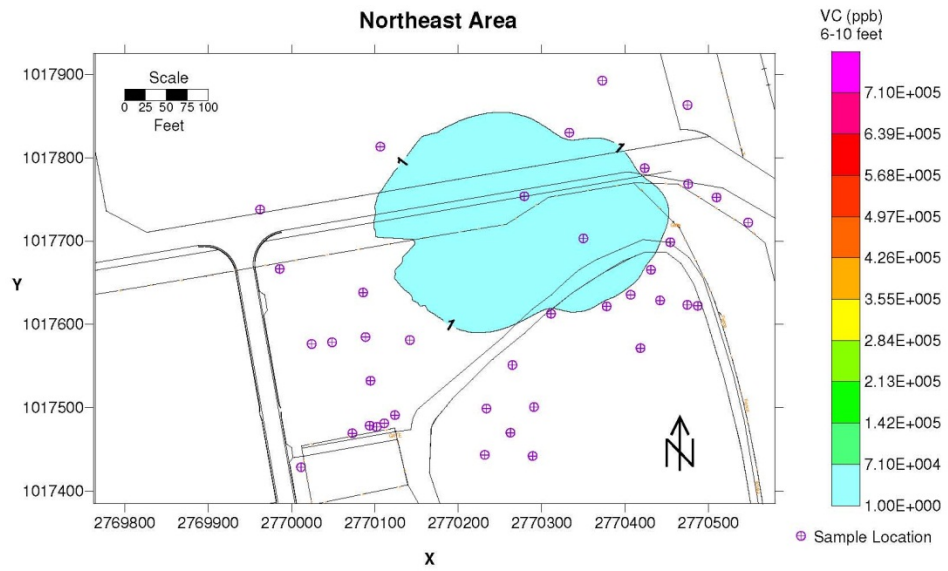


Figure 68. Northeast Area Source Area VC distribution, 6 to 10 feet below ground surface.



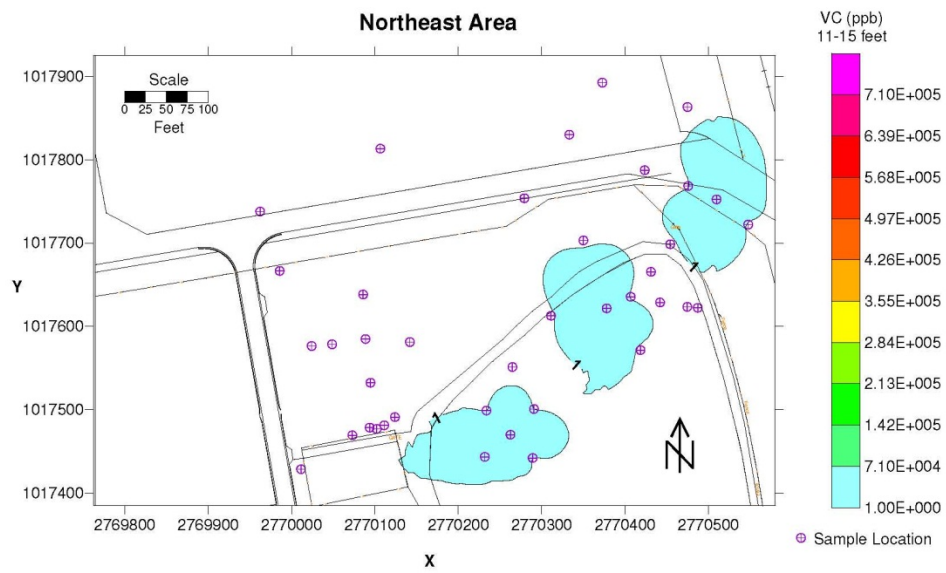


Figure 69. Northeast Area Source Area VC distribution, 11 to 15 feet below ground surface.

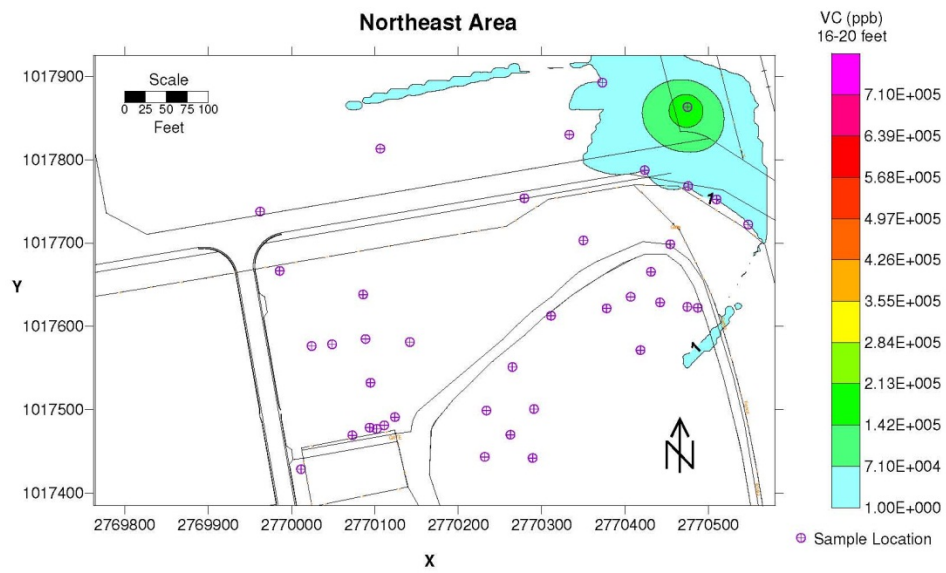


Figure 70. Northeast Area Source Area VC distribution, 16 to 20 feet below ground surface.

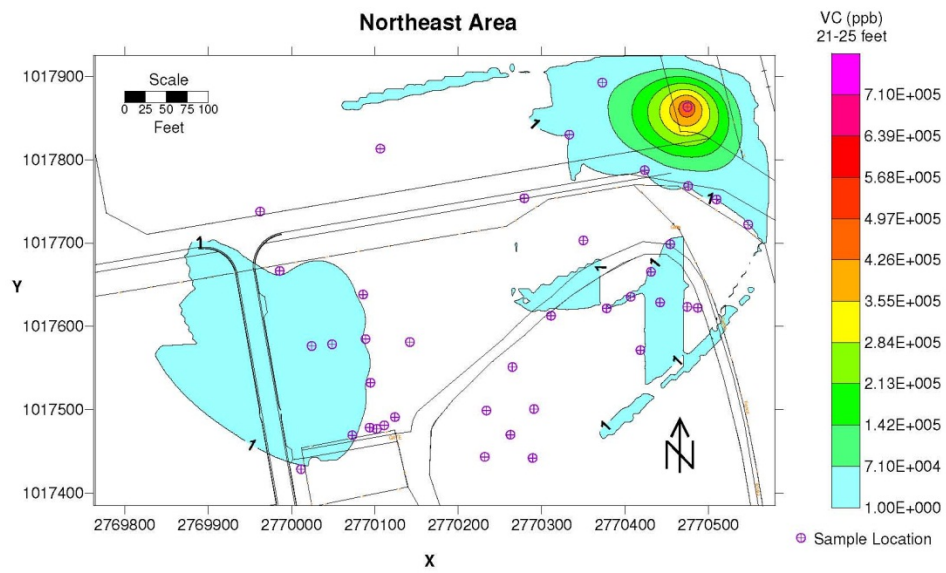


Figure 71. Northeast Area Source Area VC distribution, 21 to 25 feet below ground surface.

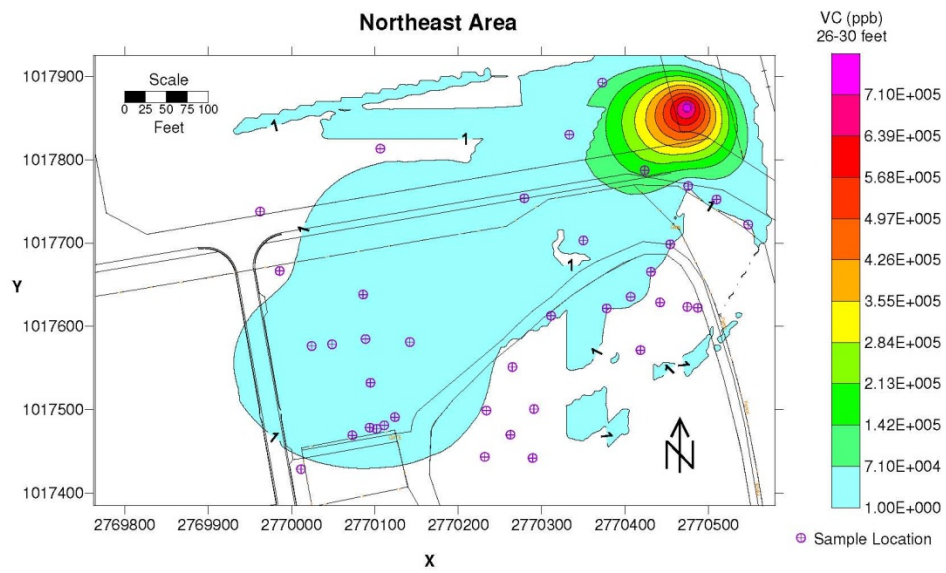


Figure 72. Northeast Area Source Area VC distribution, 26 to 30 feet below ground surface.

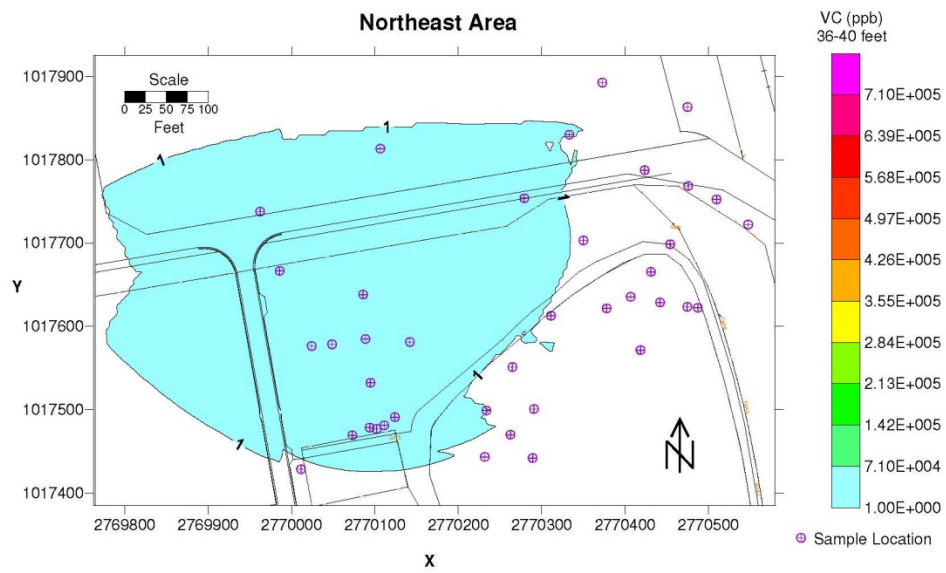


Figure 73. Northeast Area Source Area VC distribution, 36 to 40 feet below ground surface.

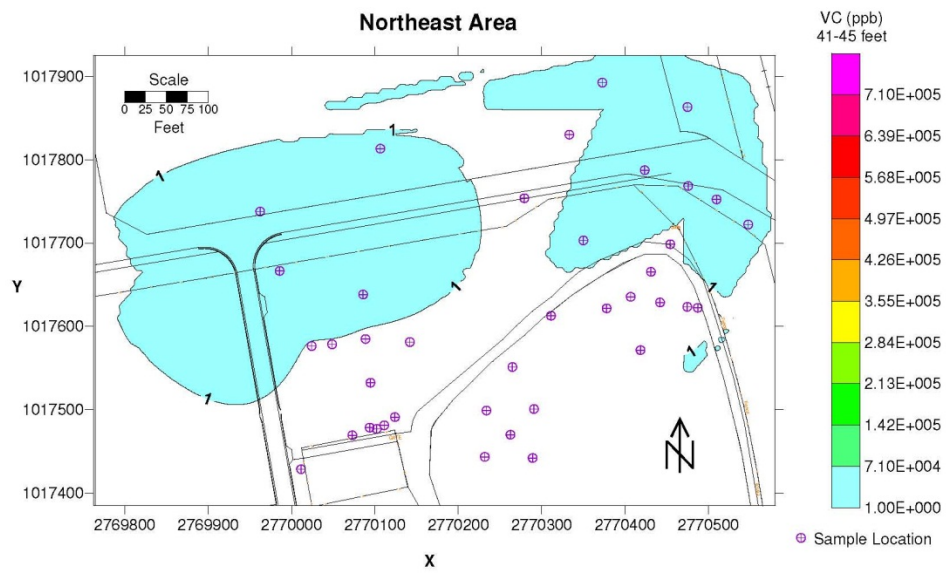


Figure 74. Northeast Area Source Area VC distribution, 41 to 45 feet below ground surface.



Figure 75. Current condition extraction well locations.



Figure 76. Future condition extraction well locations.





Figure 77. Groundwater evaluation locations.

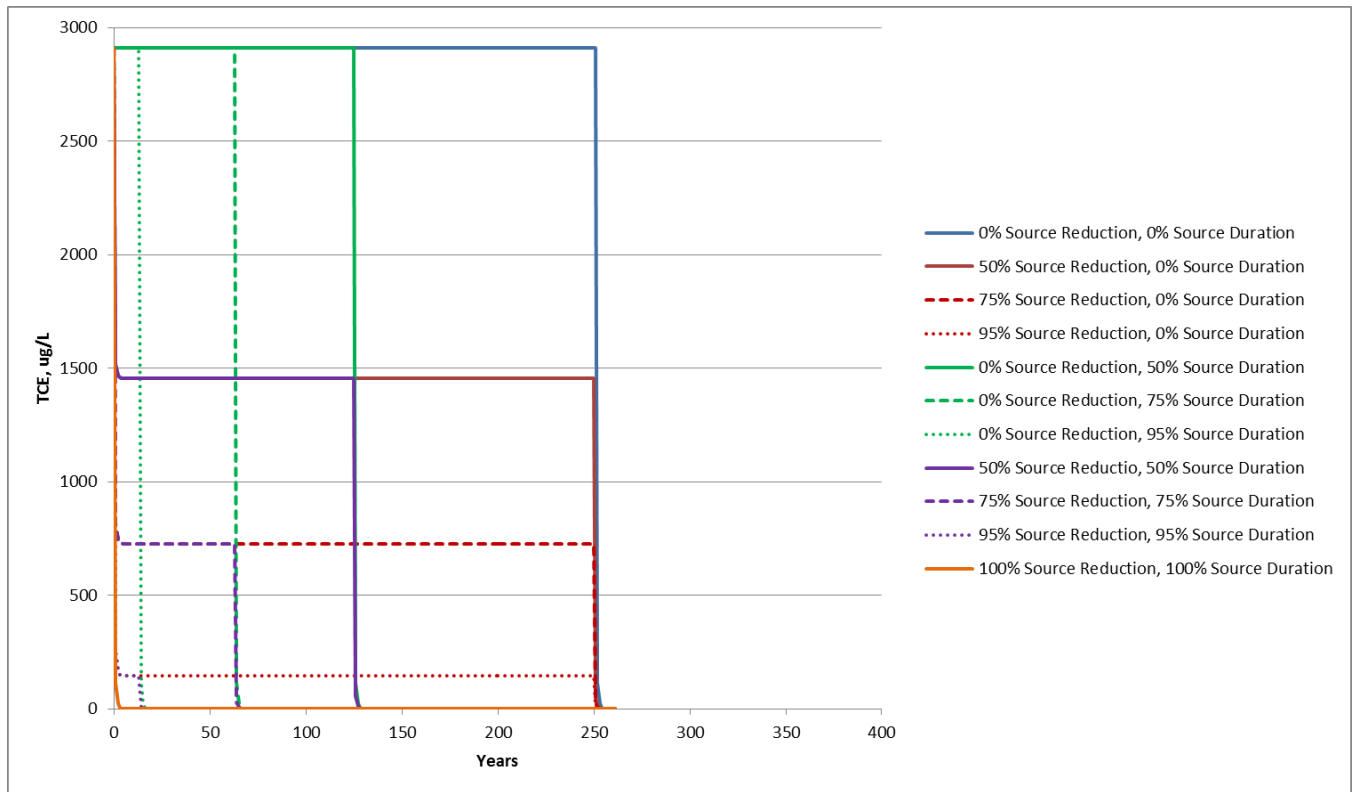


Figure 78. Building 50, current conditions, TCE remediation evaluation.

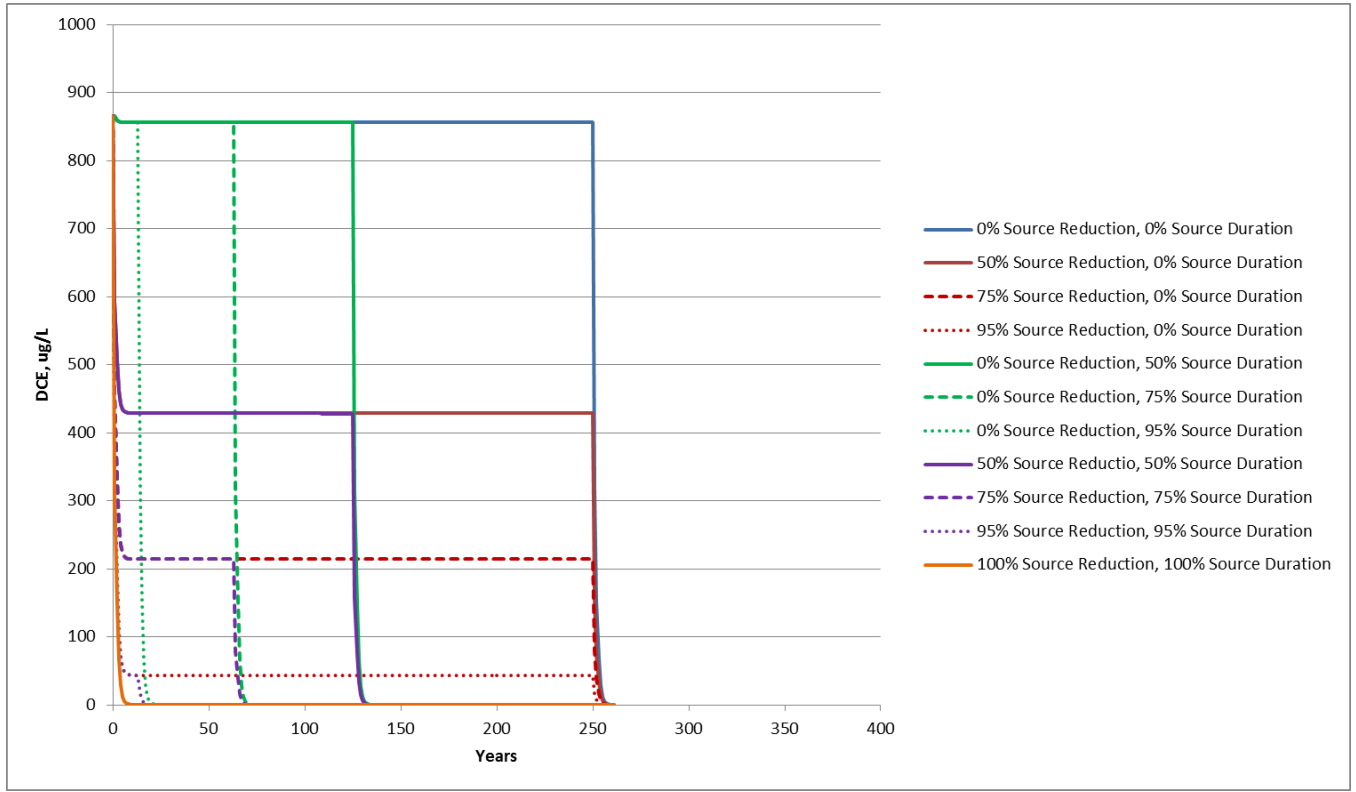


Figure 79. Building 50, current conditions, DCE remediation evaluation.

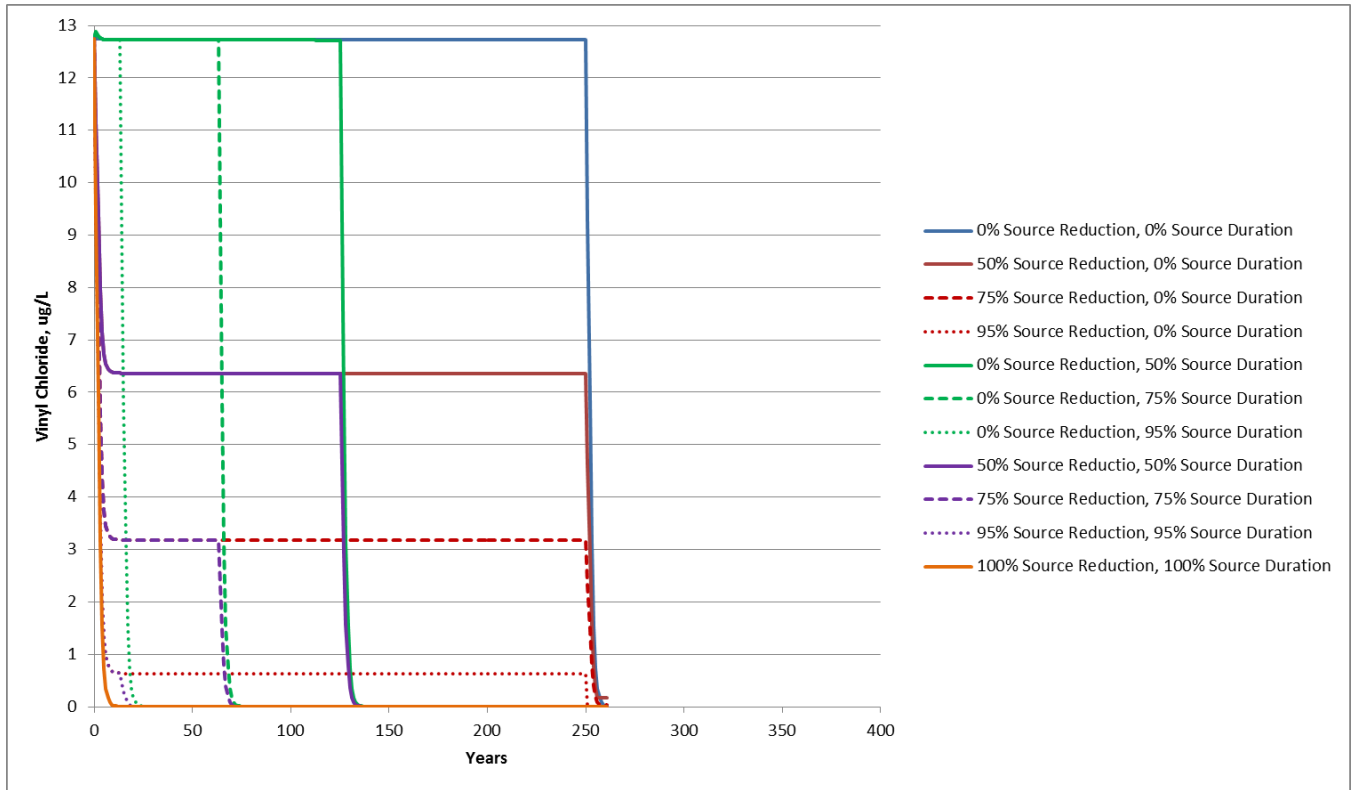


Figure 80. Building 50, current conditions, VC remediation evaluation.

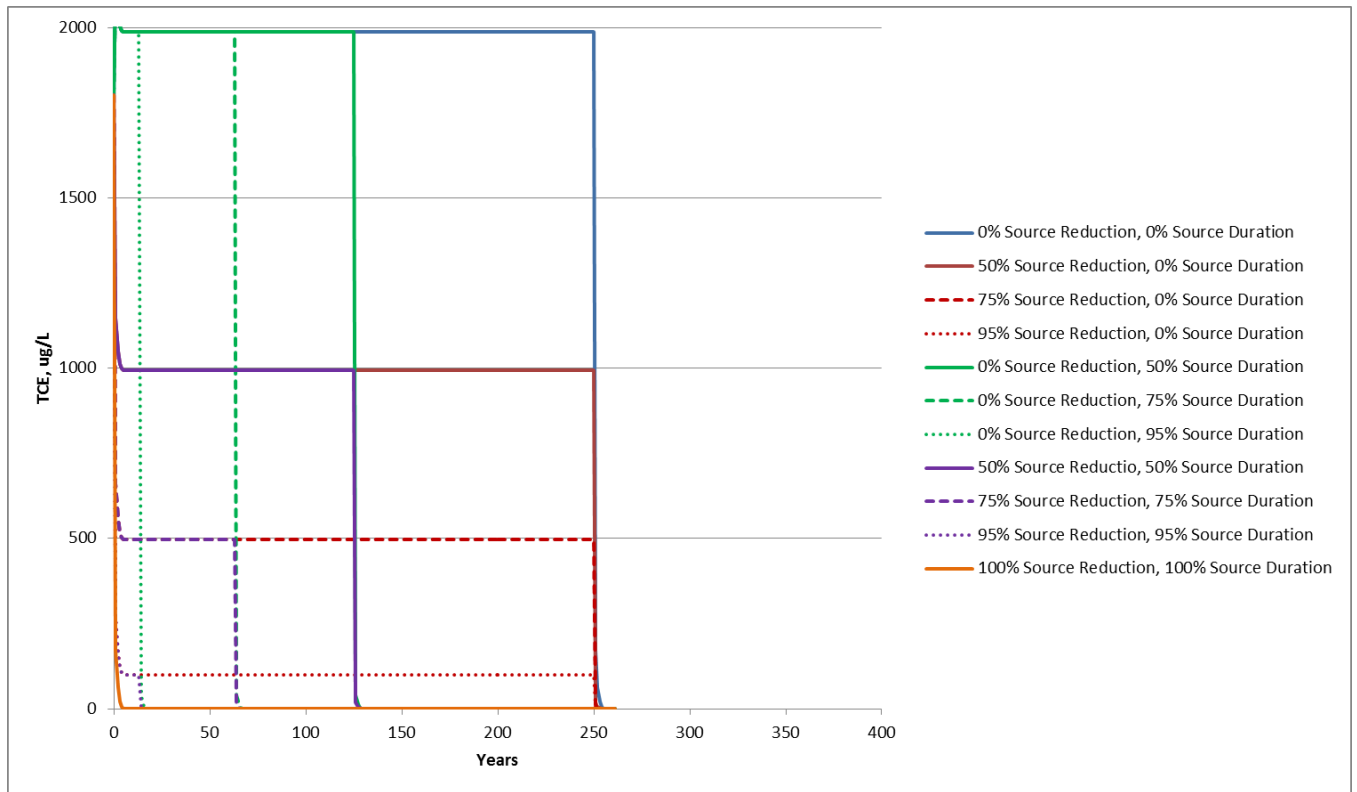


Figure 81. Building 50, future conditions, TCE remediation evaluation.

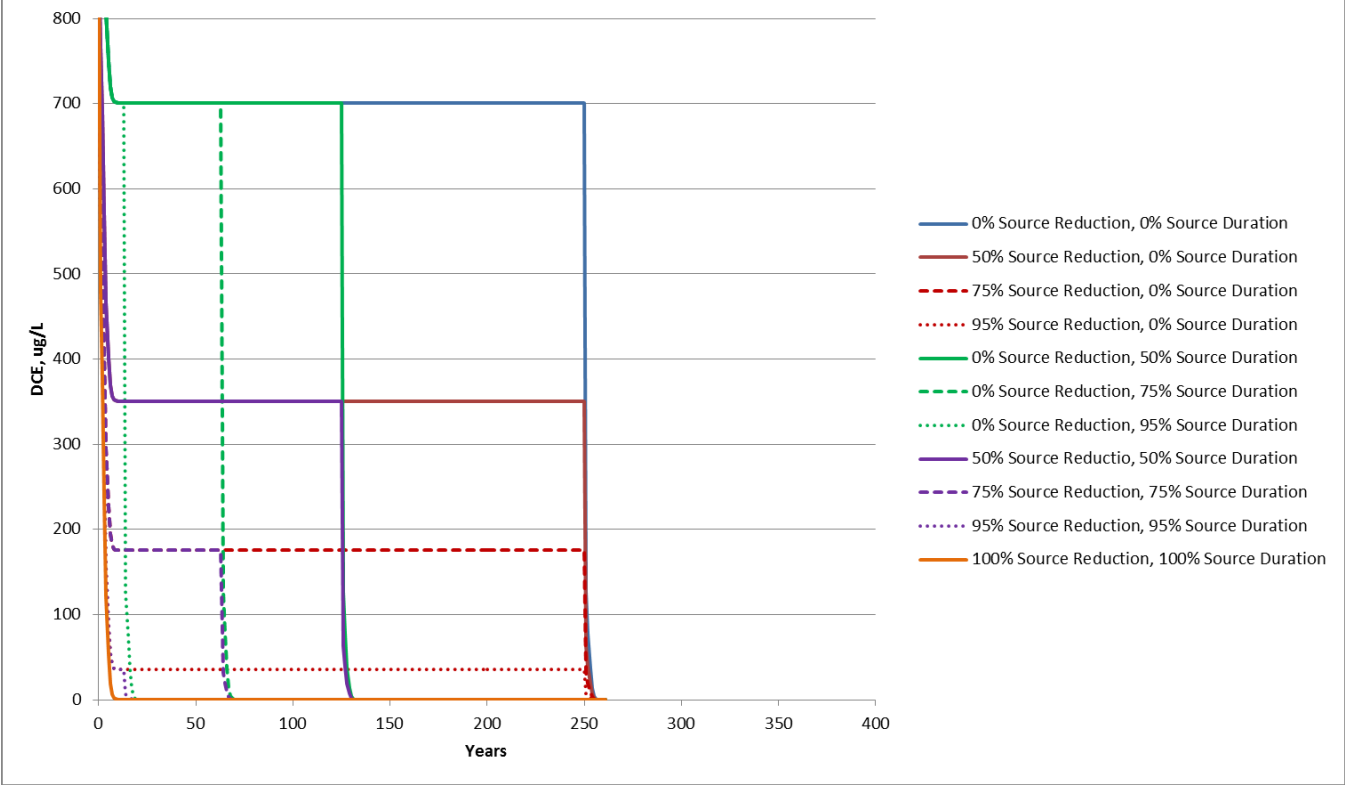


Figure 82. Building 50, future conditions, DCE remediation evaluation.

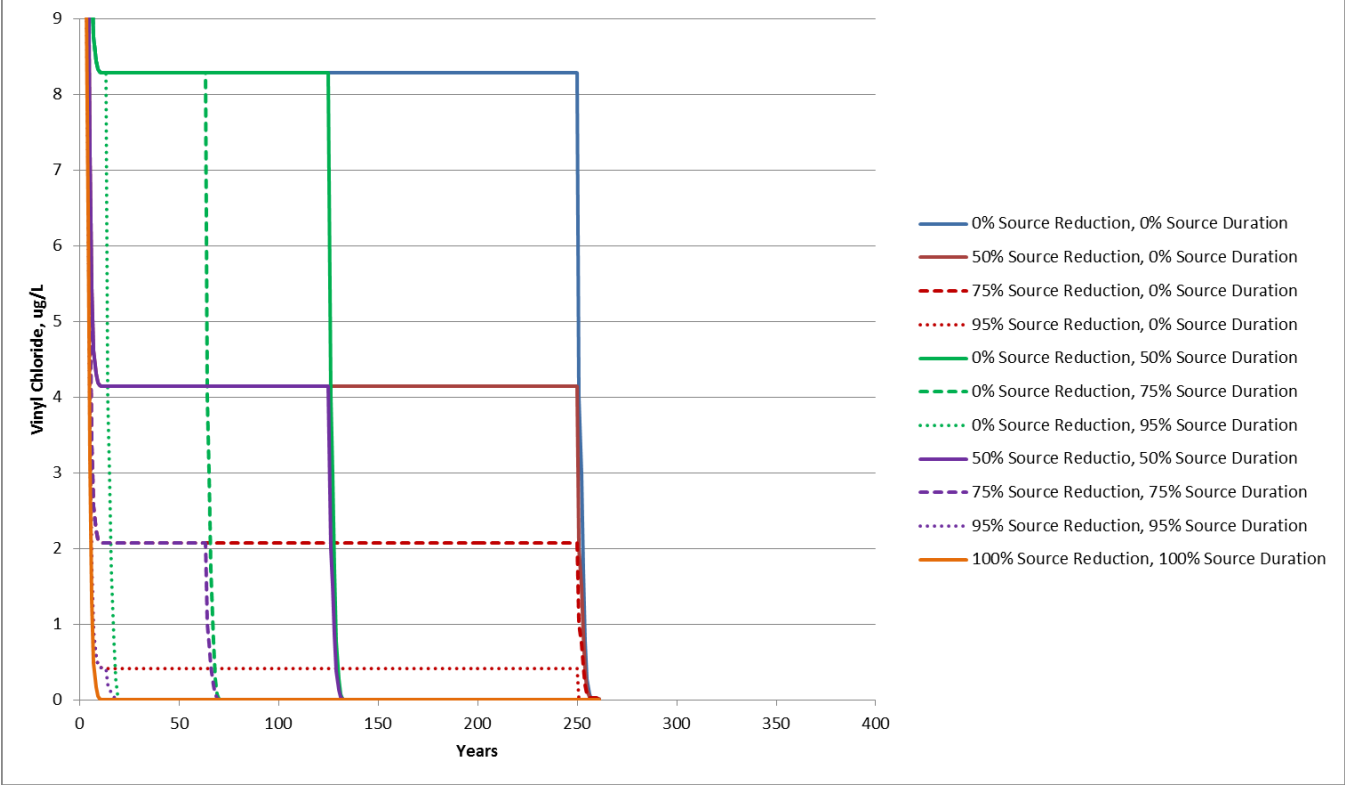


Figure 83. Building 50, current conditions, VC remediation evaluation.

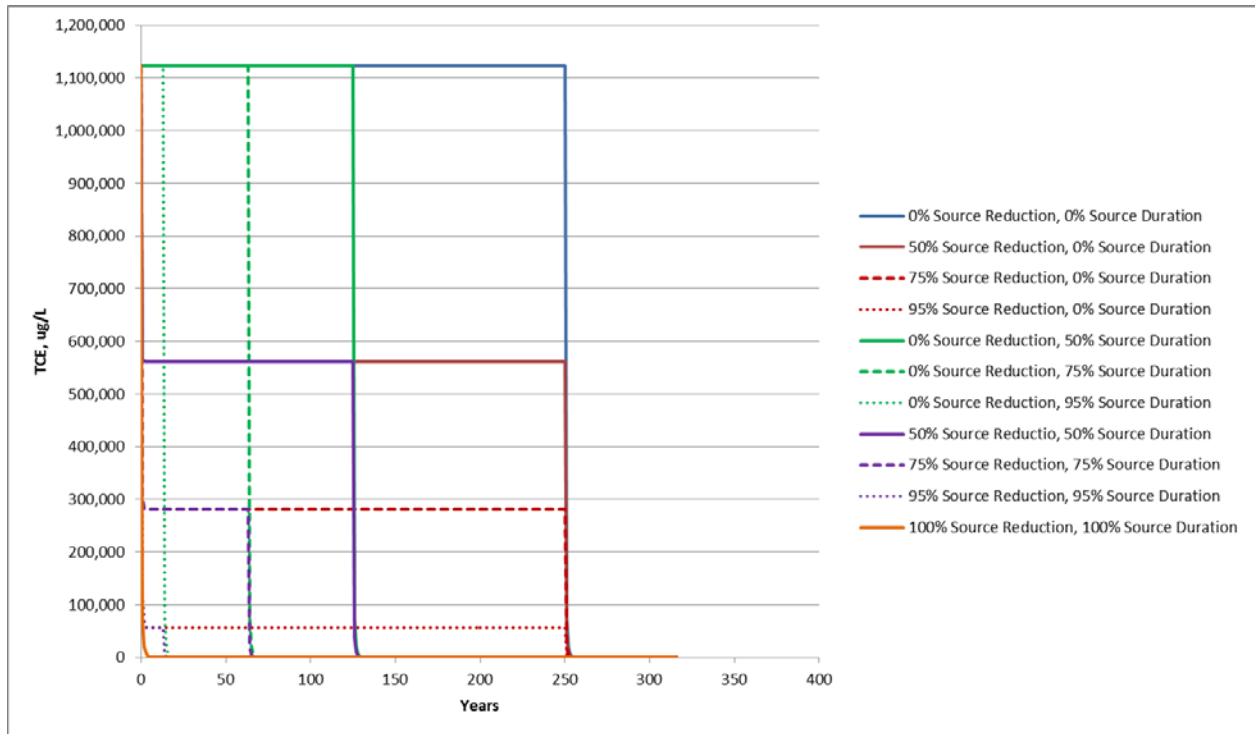


Figure 84. Department 26 and Former Plating Building East, current conditions, TCE remediation evaluation.



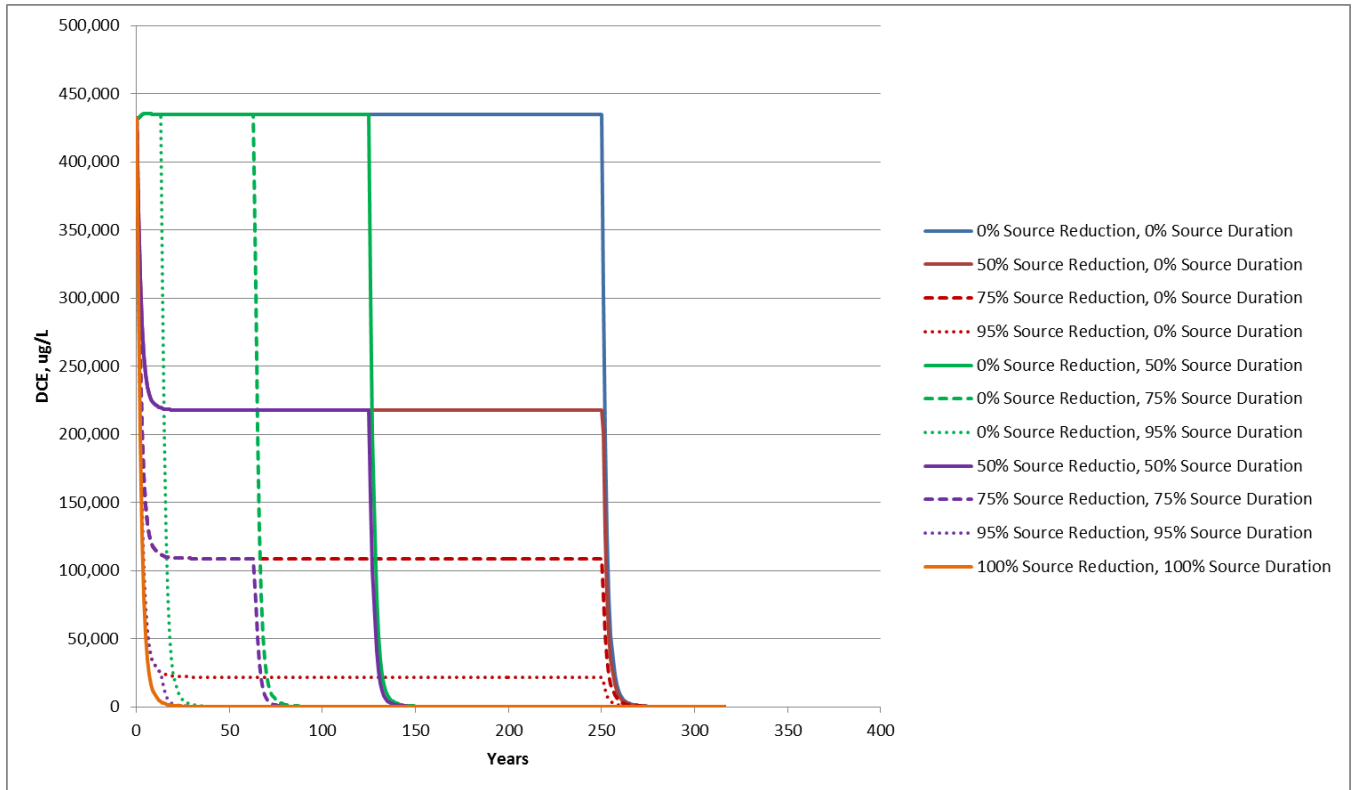


Figure 85. Department 26 and Former Plating Building East, current conditions, DCE remediation evaluation.

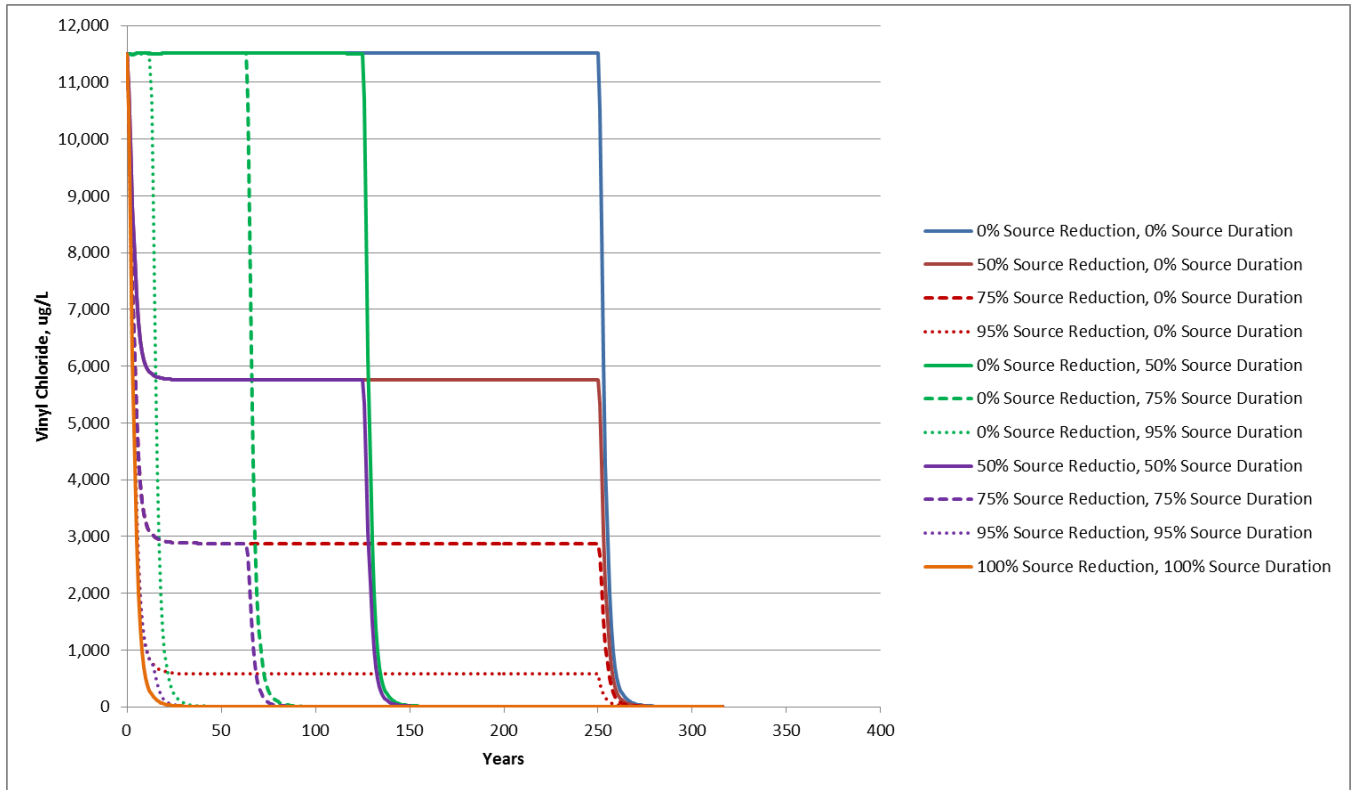


Figure 86. Department 26 and Former Plating Building East, current conditions, VC remediation evaluation.

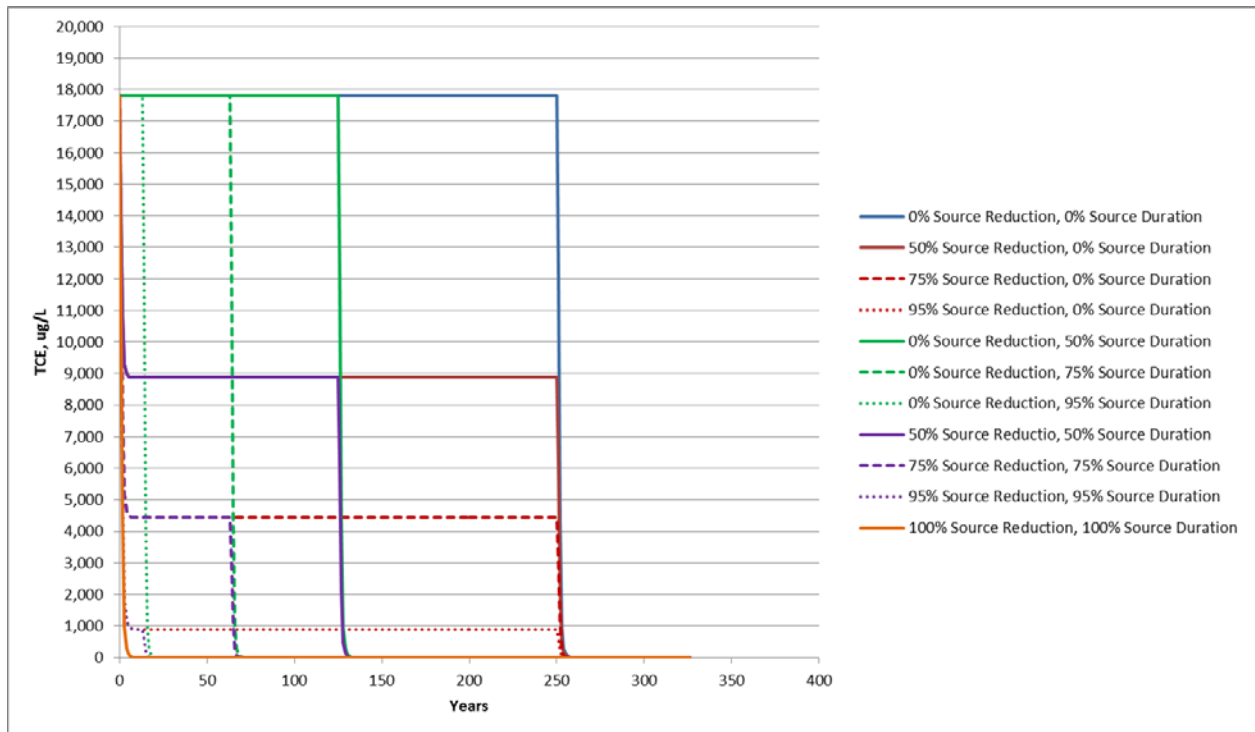


Figure 87. Department 26 and Former Plating Building West, current conditions, TCE remediation evaluation.

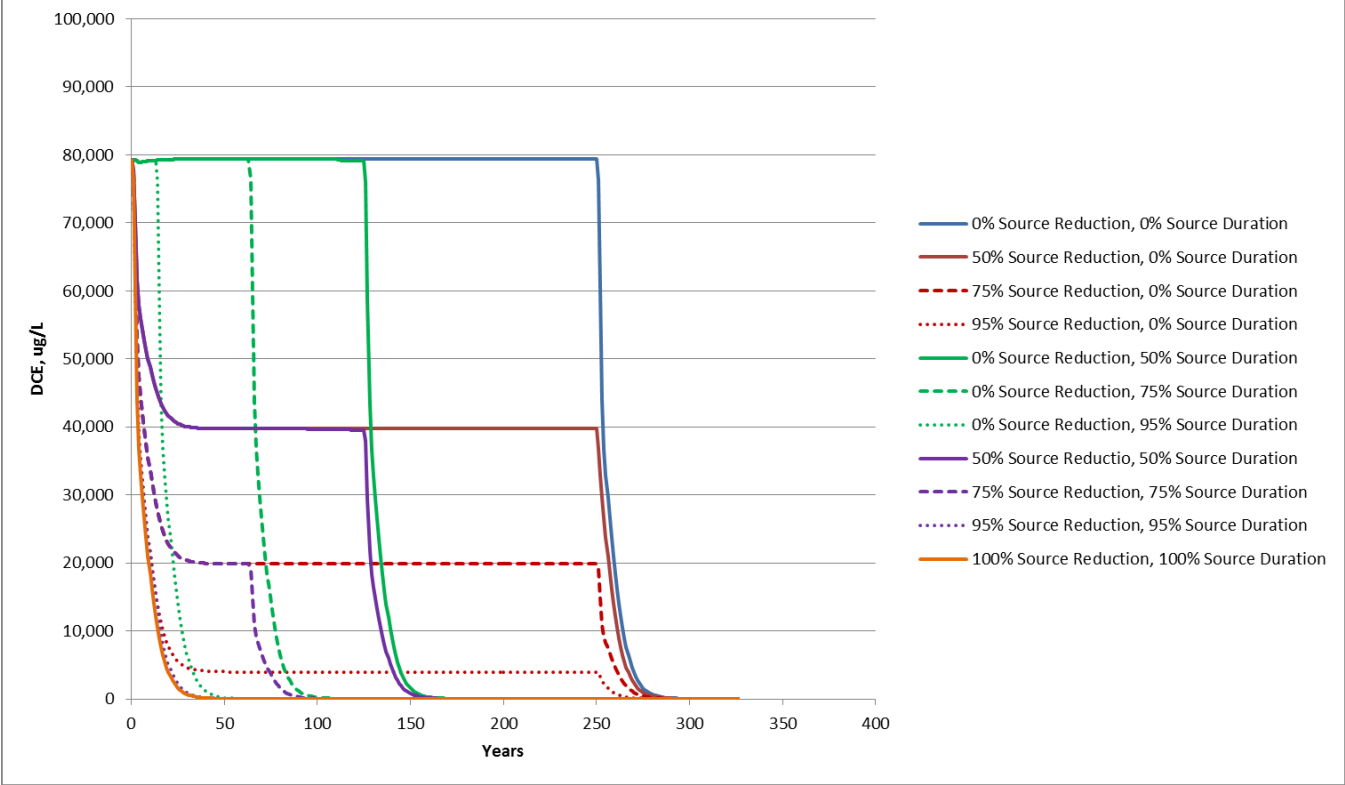


Figure 88. Department 26 and Former Plating Building West, current conditions, DCE remediation evaluation.

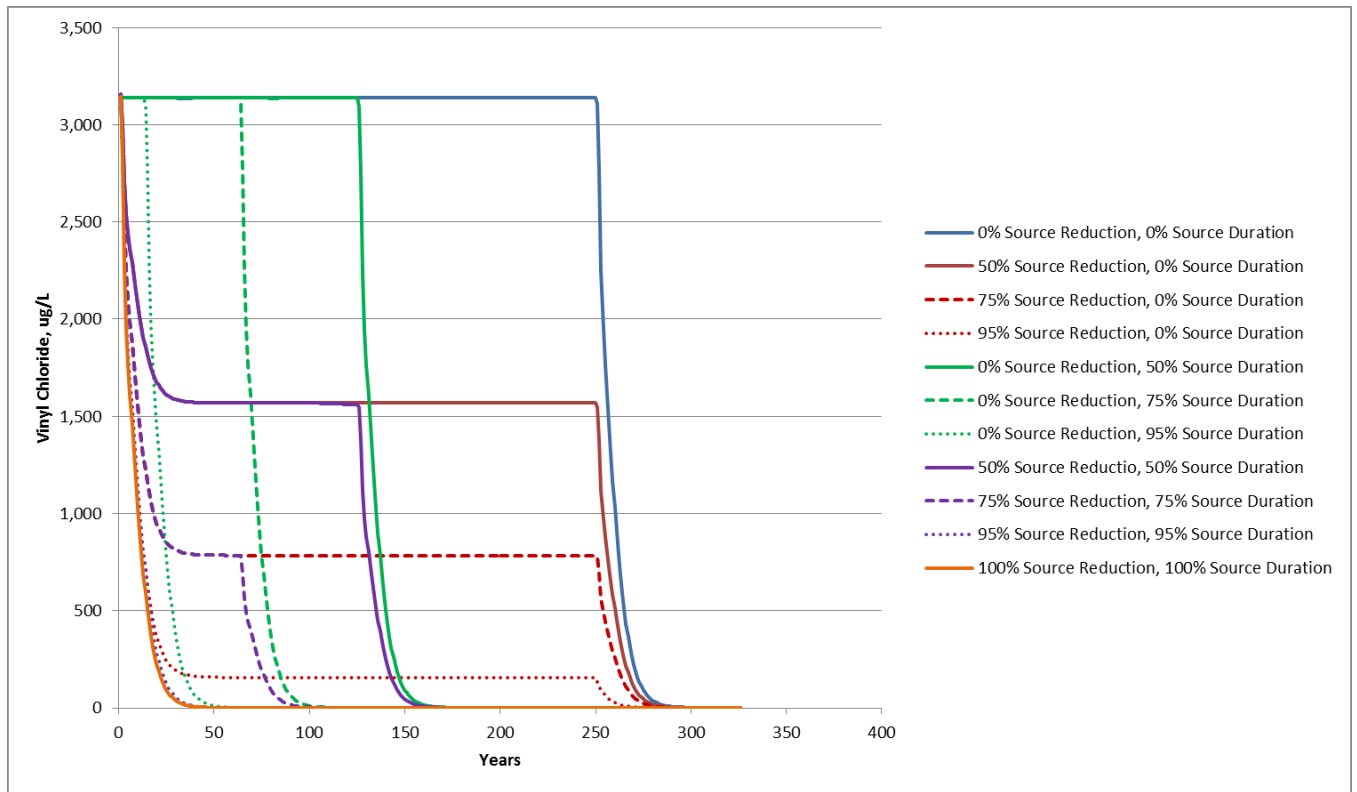


Figure 89. Department 26 and Former Plating Building West, current conditions, VC remediation.

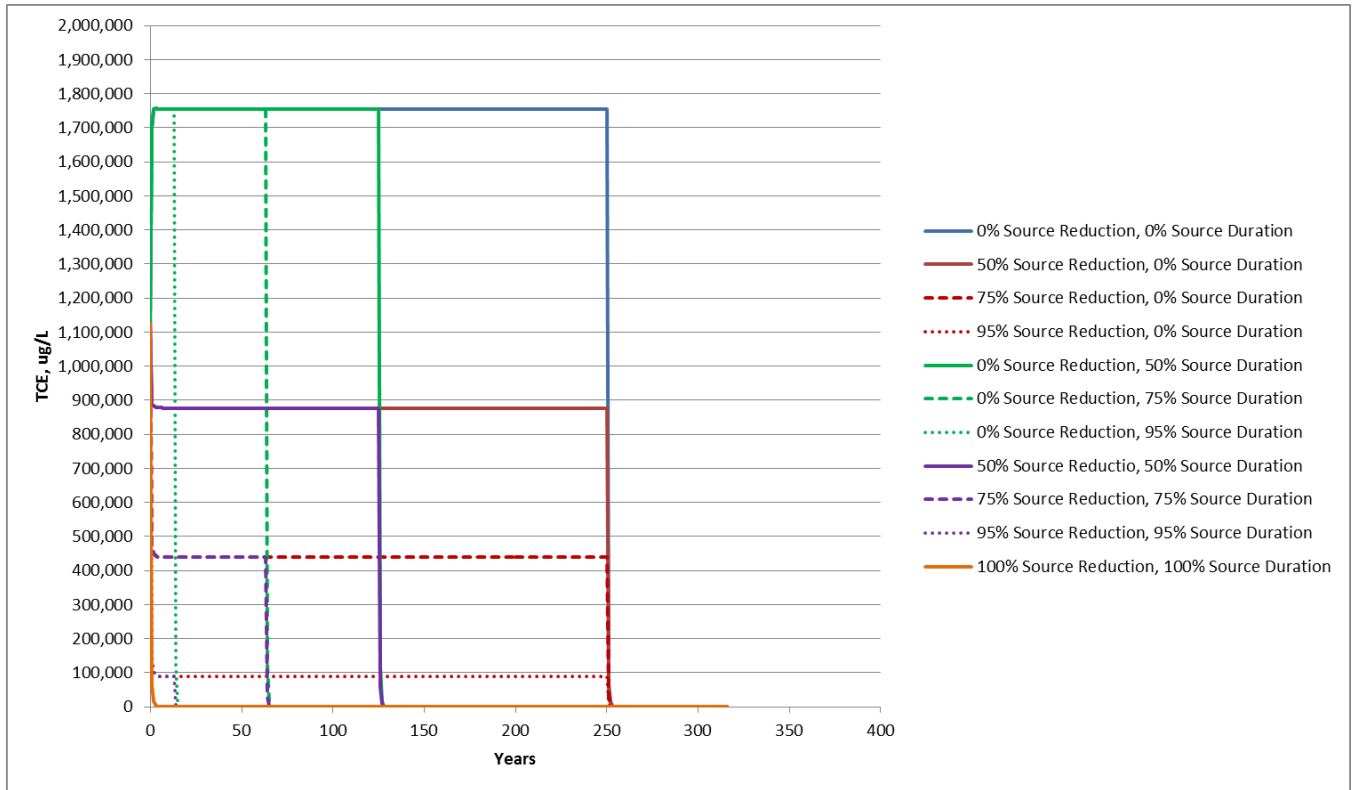


Figure 90. Department 26 and Former Plating Building East, future conditions, TCE remediation evaluation.

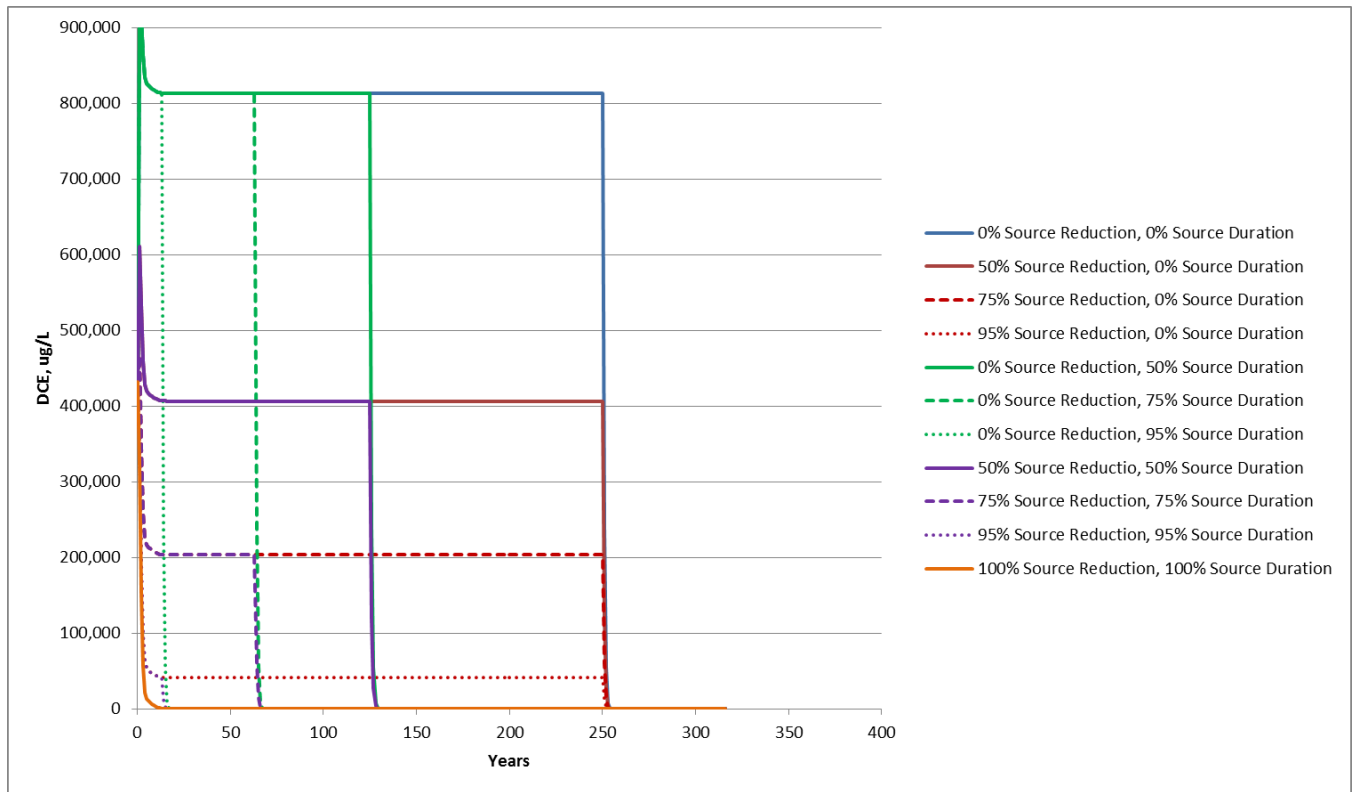


Figure 91. Department 26 and Former Plating Building East, future conditions, DCE remediation evaluation.

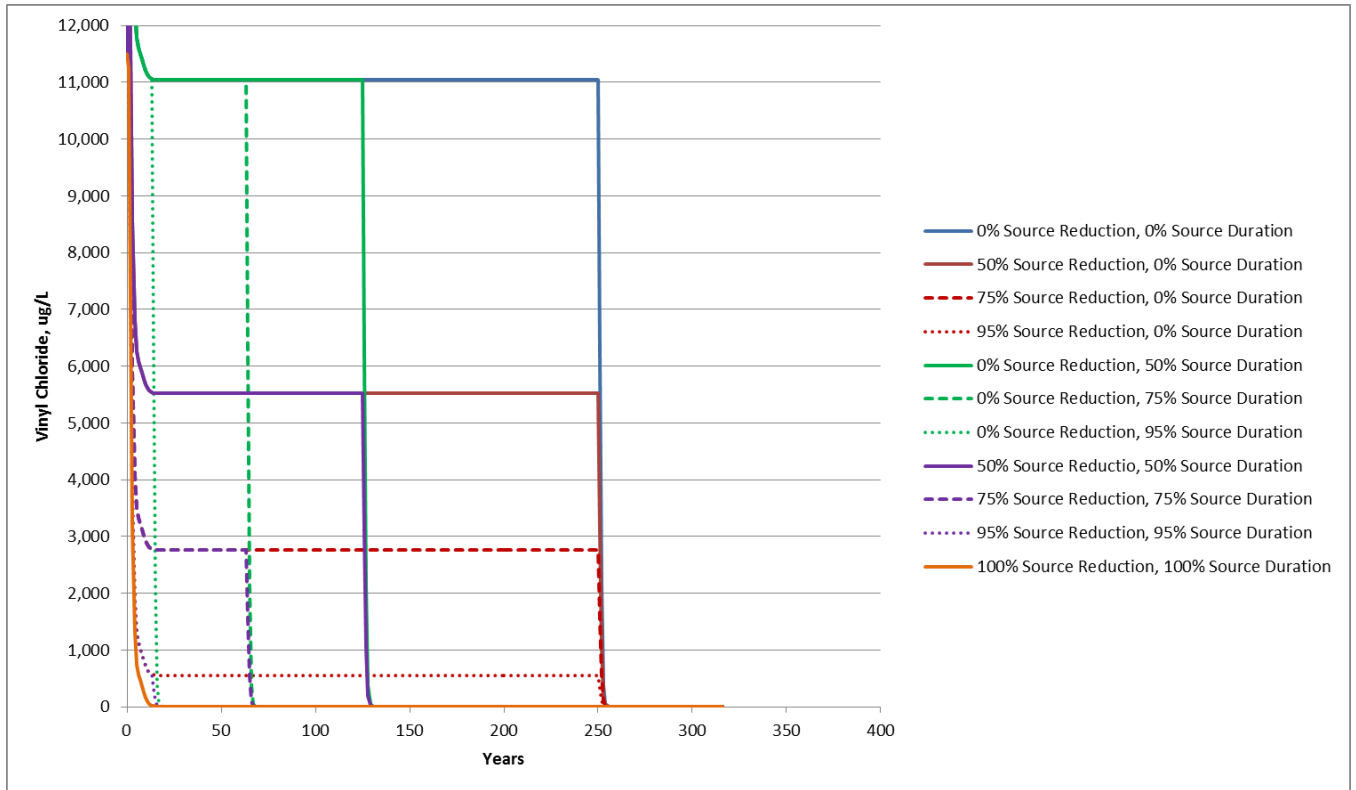


Figure 92. Department 26 and Former Plating Building East, future conditions, VC remediation evaluation.



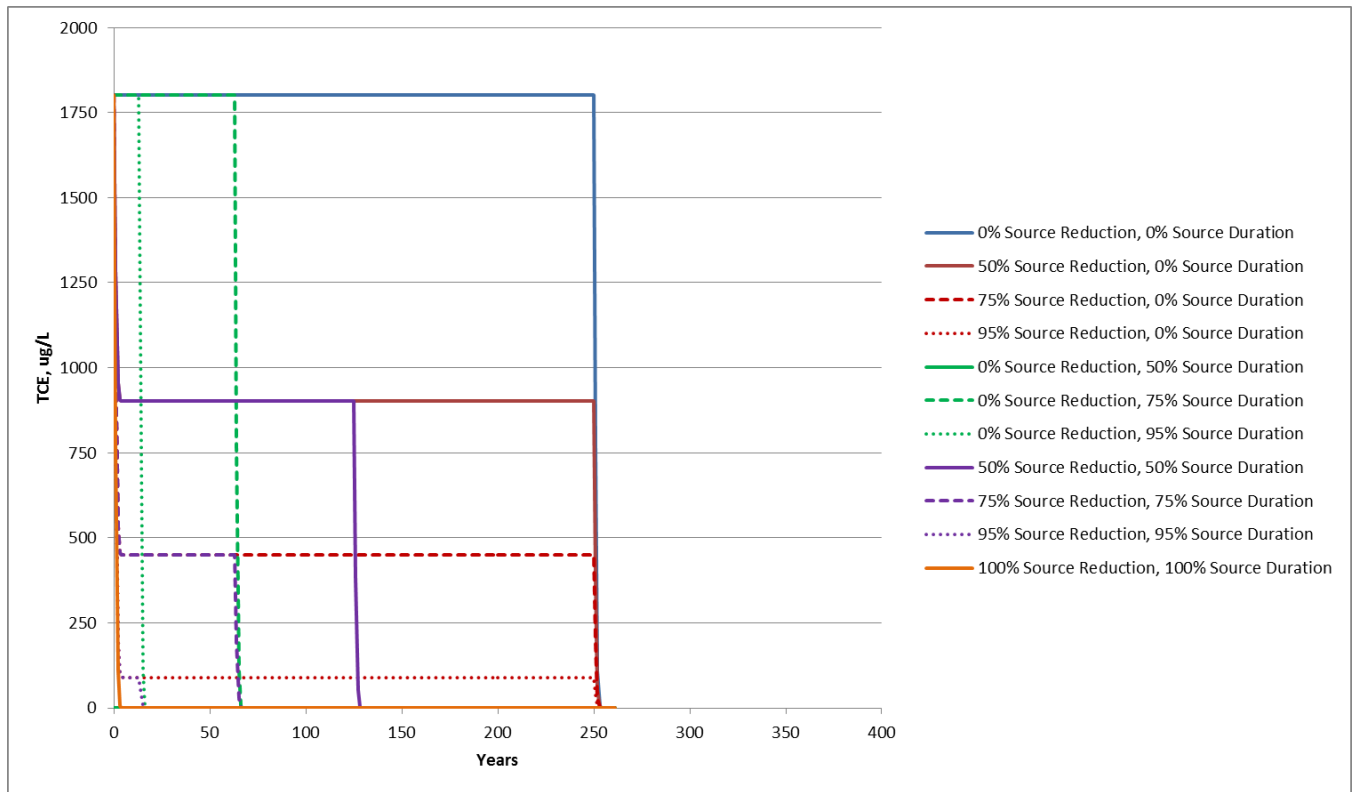


Figure 93. Northeast Area, current conditions, TCE remediation evaluation.

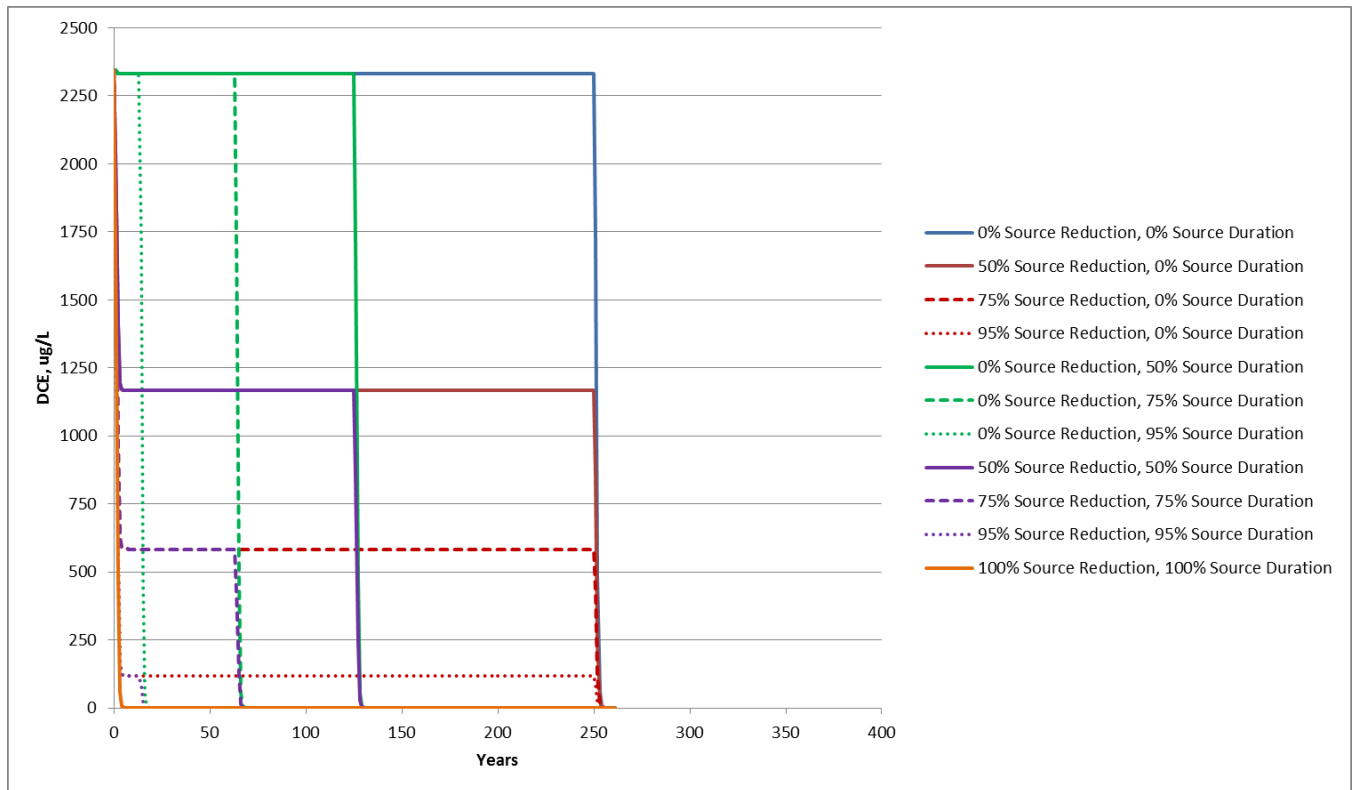


Figure 94. Northeast Area, current conditions, DCE remediation evaluation.

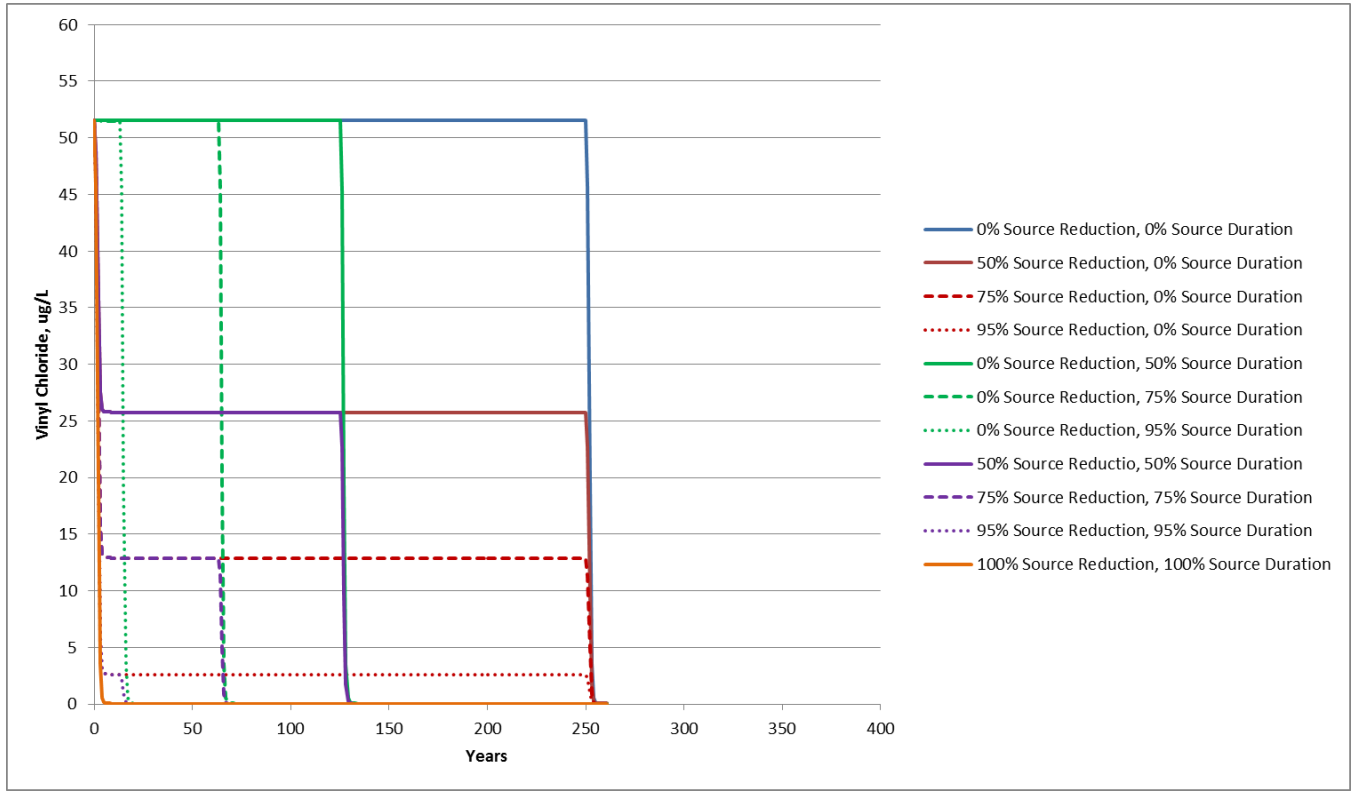


Figure 95. Northeast Area, Current conditions, VC remediation evaluation.

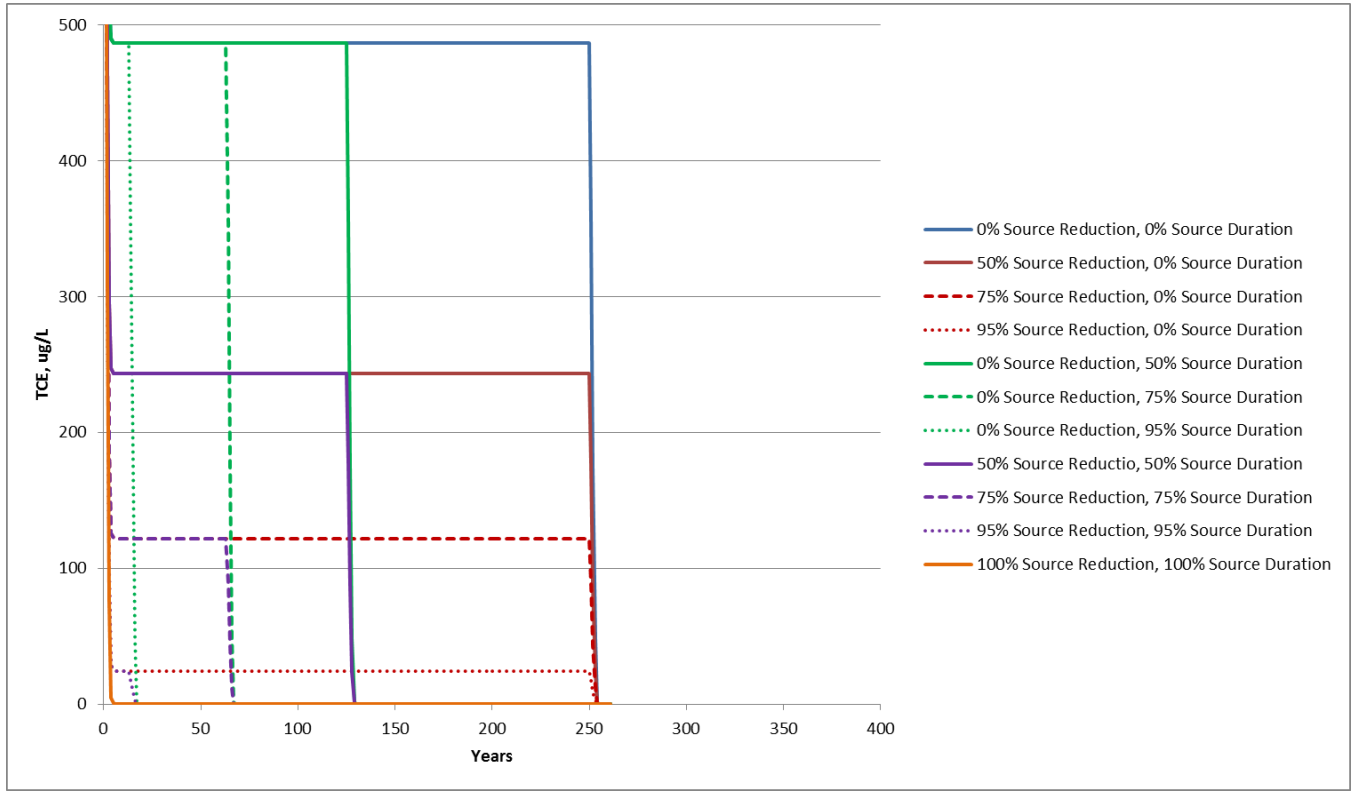


Figure 96. Northeast Area, Future conditions, TCE remediation evaluation.

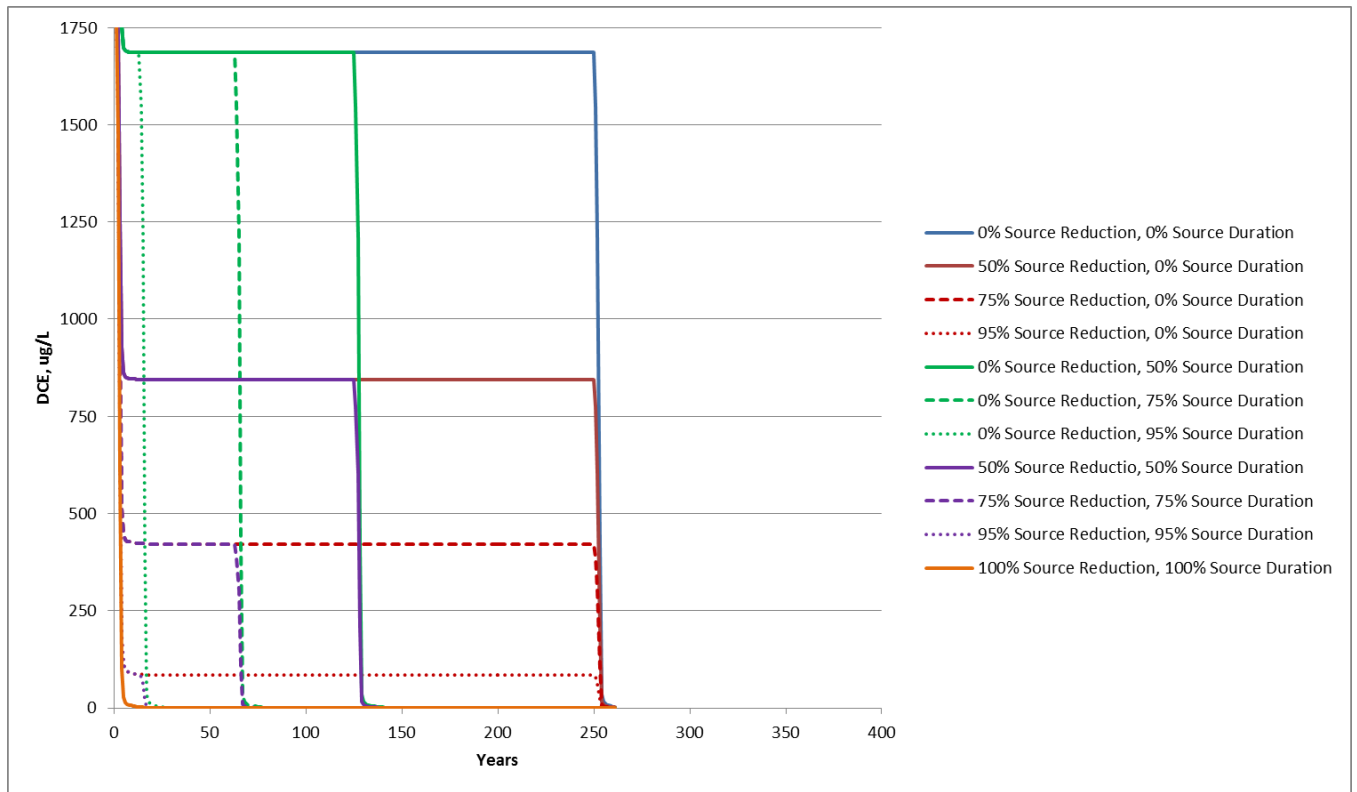


Figure 97. Northeast Area, Future conditions, DCE remediation evaluation.

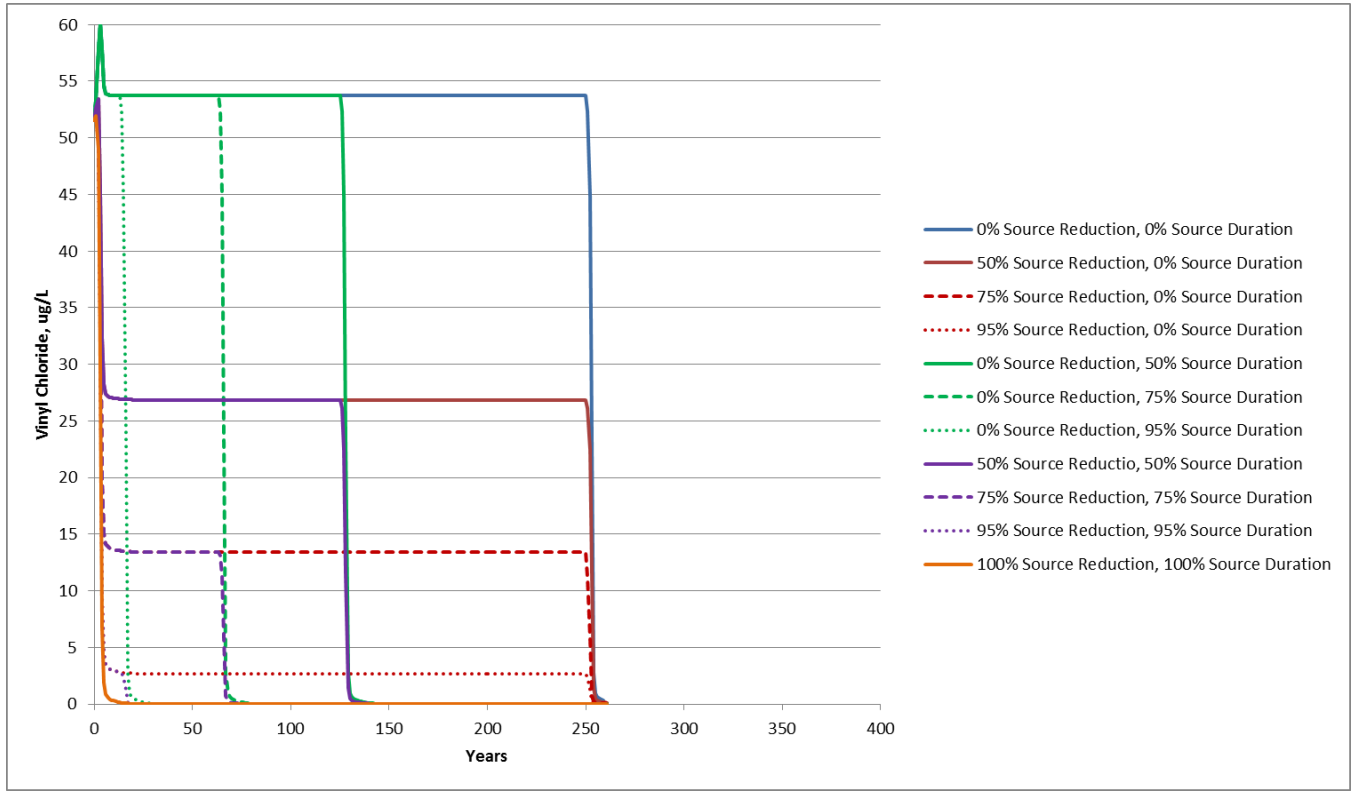


Figure 98. Northeast Area, Future conditions, VC remediation evaluation.